

AbboMax, Inc

Innovation at Work

Rabbit anti-Calumenin Polyclonal Antibody

Synonym: CALU; Calumenin 1, 2

Order Information

Description: Rabbit anti-Calumenin
Catalogue#: 600-640
Lot#: See the label
Size: 100 ug/200 ul
Host: Rabbit
Clone: N/A
Application: ELISA, WB, IHC
Reactivity: Hu, Rt, Ms

ANTIGEN PREPARATION

A synthetic peptide corresponding to the N-terminus of Calumenin protein. This sequence is identical to rat, mouse and human origins.

BACKGROUND

Calumenin (CALU) is a calcium binding protein localized in the endo/sarcoplasmic reticulum (ER) in mammalian tissues. It is involved ER and Golgi apparatus named CERC which is an acronym for its family members Cab-45, reticulocalbin, Erc-55 and Calumenin. The CALU gene encodes a deduced 315aa protein containing six- EF-hand Ca^{2+} -binding protein with one potential N-glycosylation site, and a C-terminal ER retention signal. The human and mouse/rat CALU proteins are 98% identical. Two isoforms exist in cardiac and skeletal muscles, but Calumenin-2 is the main isoforms in skeletal muscle. Increasing in the expression of Calumenin in chemotherapeutic drug resistance in neoplastic cells is observed. It is also involved in the pathophysiology of thrombosis or in wound healing. CALU mRNA is ubiquitously expressed in human tissues and maps to 7q32.

PURIFICATION

The Rabbit IgG is purified by Epitope Affinity Purification.

SPECIFICITY

This antibody recognizes ~48 kDa of Calumenin Protein. It cross reacts with human, mouse and rat. The other species are not tested.

FORMULATION

This affinity purified antibody is supplied in sterile phosphate-buffered saline (pH7.2) containing antibody stabilizer

STORAGE

The antibodies are stable for 12 months from date of receipt when stored at $-20^{\circ}C$ to $-70^{\circ}C$. The antibodies can be stored at $2^{\circ}C$ - $8^{\circ}C$ for three month without detectable loss of activity. Avoid repeated freezing-thawing cycles.

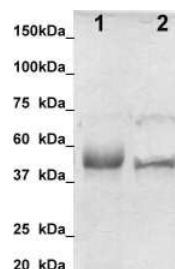
APPLICATIONS/SUGGESTED WORKING DILUTIONS

Western Blot	0.1-1 μ g/ml
ELISA	0.01-0.1 μ g/ml
Immunoprecipitation	2-5 μ g/ml
IHC	0.5-2 μ g/ml
Flow cytometry	Not tested

MOLECULAR WEIGHT:	~48 kDa
POSITIVE CONTROL:	Cardiac Muscle
CELLULAR LOCATION:	Cytoplasmic/ER

Optimal dilutions should be determined by researchers for the specific applications.

DATA ATTACHMENTS



WB: Tissue lysate from Mouse cardiac muscle (lane 1) and mouse skeletal muscle (lane 2) were resolved onto 12% SDS-PAGE and transferred onto NC Membrane, then immune-probed by Anti-Calumenin antibody, (Cat# 600-640) at 1:500.

REFERENCES

Yabe,D., et al. Calumenin, a Ca^{2+} -binding protein retained in the endoplasmic reticulum with a novel carboxyl-terminal sequence, HDEF. J. Biol. Chem. 272 (29), 18232-18239 (1997)

FOR RESEARCH USE ONLY.

AbboMax, Inc 1161 Ringwood Ct. Suite 100, San Jose, California 95131, USA
1 408-321-9898 (Tel). 1 408-321-9896 (Fax). 1-866-628-9898 www.abbomax.com info@abbomax.com