

# AbboMax, Inc

Innovation at Work

## Order Information

Description: Rabbit anti SOCS-1  
Catalogue#: 600-520  
Lot#: See the label  
Size: 100 ug/200 ul  
Host: Rabbit  
Clone: N/A  
Application: ELISA, WB, IHC  
Reactivity: Hu, Ms.

## Rabbit anti SOCS-1 Antibody

Alternate Names: Suppressor of Cytokine Signaling 1(SOCS1); SSI1; TIP3; CISH1; Cish1; SSI-1; JAK binding protein (JAB); STAT induced SH3 protein 1; cytokine-inducible SH2 protein (CIS1)

### ANTIGEN PREPARATION

A synthetic peptide corresponding to C-terminus of SOCS-1 protein from human and mouse origins.

### BACKGROUND

Cytokines induce a variety of biological responses by binding to specific cell surface receptors and activating cytoplasmic signal transduction pathways which are suppressed by other transcriptional factors. Proteins that mediate these signals from the cell surface to the nucleus include JAKs and STATs, while SOCS (Suppressor of cytokine signaling) proteins inhibit those signaling. The SOCS family comprises at least 8 members, SOCS1 to SOCS7 and CIS (cytokine inducible SH2 containing protein). Structurally, the SOCS proteins are composed of an N terminal region of variable length and amino acid composition, a central SH2 domain, and a previously unrecognized C terminal motif named the SOCS box. SOCS 1 inhibition of signal transduction appears to occur by binding to and inhibiting the catalytic activity of members of JAK family of cytoplasmic kinases (direct JAK2 kinase inhibition). SOCS1 is an important negative regulator of JAK-STAT signal pathway.

### PURIFICATION

The Rabbit IgG is purified by Epitope Affinity Purification.

### SPECIFICITY

This antibody recognizes ~24 kDa of SOCS-1 protein from human and mouse origins. The other species are not tested.

### FORMULATION

This affinity purified antibody is supplied in sterile Phosphate-buffered saline (pH7.2) containing antibody stabilizer.

### STORAGE

The antibodies are stable for 12 months from date of receipt when stored at -20°C to -70°C. The antibodies can be stored at 2°C-8°C for three month without detectable loss of activity. Avoid repeated freezing-thawing cycles.

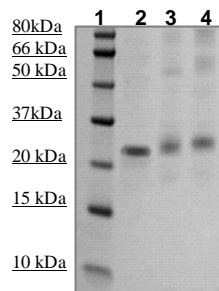
### APPLICATIONS/SUGGESTED WORKING DILUTIONS

Western Blot	0.1-1 µg/ml
ELISA	0.01-0.1 µg/ml
Immunoprecipitation	2-5 µg/ml
IHC	0.5-2 µg/ml
Flow cytometry	Not tested

<b>MOLECULAR WEIGHT:</b>	24 kDa
<b>POSITIVE CONTROL:</b>	Mouse liver Lysate
<b>CELLULAR LOCATION:</b>	Nuclear

Optimal dilutions should be determined by researchers for the specific applications.

### DATA ATTACHMENTS



**Western Blot:** The tissue /cell lysate derived from mouse liver (lane 2), mouse muscle (Lane 3) and MCF-7 (Lane 4) were immunoprobed by Rabbit anti-SCOS-1 (Cat#600-520) at 1:500. An immunoreactive band is observed around ~24kDa .

### REFERENCES:

Hongwei Qin, et al. IFN-β-induced SOCS-1 negatively regulates CD40 gene expression in macrophages and microglia. *The FASEB Journal*. 2006;20:985-987.

**FOR RESEARCH USE ONLY.**

AbboMax, Inc 1161 Ringwood Ct. Suite 100, San Jose, California 95131, USA  
1 408-321-9898 (Tel). 1 408-321-9896 (Fax). 1-866-628-9898 www.abbomax.com info@abbomax.com