

AbboMax, Inc

Innovation at Work

Rabbit anti Saposin Antibody

Alternate Names: Saposin C, Prosaposin, PSAP

Order Information

Description: Rabbit anti-Saposin (IN)
Catalogue#: 600-470
Lot#: See the label
Size: 100 ug/200 ul
Host: Rabbit
Clone: N/A
Application: ELISA, WB
Reactivity: Hu

ANTIGEN PREPARATION

A synthetic peptide corresponding to internal sequence (within 300-360aa) of human Saposin.

BACKGROUND

The Saposin family includes four structurally related proteins, saposin A, B, C, and D which are ~80 aa small acidic acitvator proteins with specificities for glycosphingolipid (GSL) hydrolases. They are derived from a single precursor, prosaposin. In both humans and mice, prosaposin/saposin deficiencies lead to severe neurological deficits. Saposins are processed from prosaposin in the late endosome and lysosome, and their stability is maintained by three disulfide bridges. The post-modified prosoposin is an ~70 kDa form which subsequently undergoes partial proteolysis to produce saposin A, B, C, and D, each proteins are between 12-14 kDa in mass.

PURIFICATION

The Rabbit IgG is purified by specific Epitope Affinity Purification.

SPECIFICITY

This antibody recognizes ~70 kDa of human Prosaposin protein. It also reacts with mouse and rat. The other species are not tested.

FORMULATION

This affinity purified antibody is supplied in sterile Tris-buffered saline (pH7.2) containing antibody stabilizer

STORAGE

The antibodies are stable for 12 months from date of receipt when stored at -20°C to -70°C. The antibodies can be stored at 2°C-8°C for three month without detectable loss of activity. Avoid repeated freezing-thawing cycles.

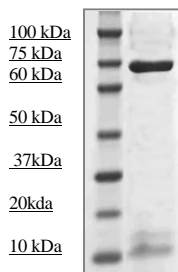
APPLICATIONS/SUGGESTED WORKING DILUTIONS

Western Blot	0.1-1 µg/ml
ELISA	0.01-0.1 µg/ml
Immunoprecipitation	2-5 µg/ml
IHC	Not tested
Flow cytometry	Not tested

MOLECULAR WEIGHT:	70 kDa
POSITIVE CONTROL:	HepG2
CELLULAR LOCATION:	N/A

Optimal dilutions should be determined by researchers for the specific applications.

DATA ATTACHMENTS



Western Blot: The whole cell lysate derived from human hepatoma HepG2 was immunoblotted Rabbit anti-Saposin (Cat#600-470) at 1:500.

REFERENCES

Ying Sun et al. Combined saposin C and D deficiencies in mice lead to a neuronopathic phenotype, glucosylceramide and -hydroxy ceramide accumulation, and altered prosaposin trafficking. Human Molecular Genetics 2007 16(8):957-971.

FOR RESEARCH USE ONLY.

AbboMax, Inc 1161 Ringwood Ct. Suite 100, San Jose, California 95131, USA
1 408-321-9898 (Tel). 1 408-321-9896 (Fax). 1-866-628-9898 www.abbomax.com info@abbomax.com