

AbboMax, Inc

Innovation at Work

Rabbit anti-Phospho- GSK-3 α (pSer²¹)

Synonym: Glycogen synthase kinase 3 alpha (GSK3 α)

ANTIGEN PREPARATION

A synthetic peptide surrounding to the epitope -RTSSFA- with a phosphorylation site at Ser21 of human GSK3-alpha protein. This sequence is identical among human, mouse and rat.

BACKGROUND

Glycogen Synthase Kinase-3 has two isoforms, GSK-3 α and GSK3 β . GSK3 is a serine/threonine kinase that affects glycogen metabolism by phosphorylating and down-regulating the activity of muscle glycogen synthase as well as the regulation in Wnt signal pathway. GSK-3 alpha reduces the substrates beta-catenin and tau to imply an important role in Wnt signaling and tauopathies such as Alzheimer's disease..

PURIFICATION

The Rabbit IgG is purified by site-modified Epitope Affinity Purification.

SPECIFICITY

This antibody recognizes GSK-3 alpha (pS21) with a phosphorylated site at Serine 9. It does not cross-react with non-phosphospecific peptide.

APPLICATIONS/SUGGESTED WORKING DILUTIONS

Western Blot	0.1-1 μ g/ml
ELISA	0.01-0.1 μ g/ml
Immunoprecipitation	2-5 μ g/ml
IHC	Not tested
Flow cytometry	Not tested

FORMULATION

This affinity purified antibody is supplied in sterile Tris-buffered saline (pH7.2) containing antibody stabilizer

STORAGE

The antibodies are stable for 12 months from date of receipt when stored at -20°C to -70°C . The antibodies can be stored at 2°C - 8°C for three month without detectable loss of activity. Avoid repeated freezing-thawing cycles.

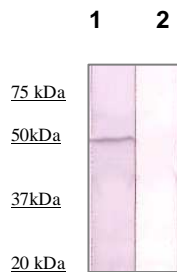
Order Information

Description:	Rabbit anti Phospho-GSK3 α (pS21)
Catalogue#:	600-330
Lot#:	See the label
Size:	100 μ g/200 μ l
Host:	Rabbit
Clone:	N/A
Application:	ELISA, WB, IHC
Reactivity:	Hu: Rt: Ms.

MOLECULAR WEIGHT:	52 kDa
POSITIVE CONTROL:	3T3 cell lysate
CELLULAR LOCATION:	Cytoplasmic

Optimal dilutions should be determined by researchers for the specific applications.

DATA ATTACHMENTS



Western Blot: The 3T3 cell lysate derived from conditioned culture medium was resolved onto 10% SDS-PAGE, transferred onto NC membrane, and followed by an immunoblotting with Rabbit anti GSK-3 alpha (pS21) (Cat#600-330) antibody at 1:500 (lane 1). Lane 2 was pre-incubated with immunizing peptide

REFERENCES

Ayodeji A Ssuni, et al. GSK3alpha exhibits beta-catenin and tau directed kinase activities that are modulated by Wnt (2006). Eur J Neurosci. 24 (12): 3387-92.
Yuko Kawakami, et al. Protein Kinase C β II Regulates Akt Phosphorylation on Ser-473 in a Cell Type- and Stimulus-specific Fashion (2004) THE J. Biol. Chem. 279 (46): 47720-47725.

FOR RESEARCH USE ONLY.

AbboMax, Inc 1161 Ringwood Ct. Suite 100, San Jose, California 95131, USA
1 408-321-9898 (Tel). 1 408-321-9896 (Fax). 1-866-628-9898 www.abbomax.com info@abbomax.com