

AbboMax, Inc

Innovation at Work

Rabbit anti-Phospho- CREB(pSer¹³³) Antibody

Synonym: cAMP-response-element-binding protein (CREB).

ANTIGEN PREPARATION

A synthetic peptide corresponding to the epitope of RPSYR with a single phosphorylation site Ser133.

BACKGROUND

CREB is a bZIP transcription factor that binds the cAMP response element (CRE) and activates target genes. It is involved in many extracellular signals resulting in regulation of a variety of cellular responses. Phosphorylation of CREB at Ser133 by various kinases, such as PKA, PKC, CaM kinase II and IV, is necessary for CREB signaling.

PURIFICATION

The Rabbit IgG is purified by Epitope Affinity Purification.

SPECIFICITY

This antibody only recognizes ~40 kDa of human CREB protein. It also reacts with rat CREB protein. The other species are not tested.

APPLICATIONS/SUGGESTED WORKING DILUTIONS

Western Blot	0.1-1 µg/ml
ELISA	0.01-0.1 µg/ml
Immunoprecipitation	2-5 µg/ml
IHC	1:50 µg/ml
Flow cytometry	Not tested

FORMULATION

This affinity purified antibody is supplied in sterile phosphate-buffered saline (pH7.2) containing antibody stabilizer

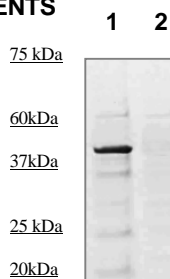
STORAGE

The antibodies are stable for 12 months from date of receipt when stored at -20°C to -70°C. The antibodies can be stored at 2°C-8°C for three month without detectable loss of activity. Avoid repeated freezing-thawing cycles.

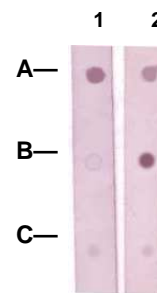
MOLECULAR WEIGHT:	40 kDa
POSITIVE CONTROL:	Rat Brain
CELLULAR LOCATION:	Cytoplasmic

Optimal dilutions should be determined by researchers for the specific applications.

DATA ATTACHMENTS



Western Blot: The tissue lysate derived from ischemia rat brain was immunoprecipitated by Rabbit anti CREB (Cat#500-7354), then immuno-blotted by the Rabbit anti phospho-CREB (pS133) (Cat#600-280) antibody at 1:500 (lane 1), Lane 2: negative control.



Dot Blot:
1 µg peptide was blot onto NC membrane
A: CREB(pS133)
B: CREB (non phosphorylated)
C: Non-related Phosphopeptide
Followed by rabbit antibodies incubation at a 1:1000 dilution:
1: Rabbit anti CREB (pS188) (Cat#600-280)
2: Rabbit anti-CREB(Paired S133) Cat# (500-7354)

REFERENCES

Dong Ya Zhu, et al. Activation of cAMP-response-element-binding protein (CREB) after focal cerebral ischemia stimulates neurogenesis in the adult dentate gyrus. PNAS, vol. 101(25), 9453-9457 (2004)

FOR RESEARCH USE ONLY.

Order Information

Description: Rabbit anti CREB(pS133)
Catalogue#: 600-280
Lot#: See the label
Size: 100 ug/200 ul
Host: Rabbit
Clone: N/A
Application: ELISA, WB, IHC
Reactivity: Hu, Rt.