

AbboMax, Inc

Innovation at Work

Rabbit anti-Phospho- STAT5 (pTyr⁶⁹⁴)

Synonym: Signal transducer and activator of transcription 5 (STAT5)

Order Information

Description: Rabbit anti Phospho-STAT5(pY694)
Catalogue#: 500-9334
Lot#: See the label
Size: 100 ug/200 ul
Host: Rabbit
Clone: N/A
Application: ELISA, WB, IHC
Reactivity: Hu, Rt, Ms, Bv, Dg.

ANTIGEN PREPARATION

A synthetic peptide surrounding to the epitope -DGYVK-- with phosphorylation sites at Tyr694 of STAT5 protein from human, mouse and rat origins.

BACKGROUND

STAT proteins (Signal transducer and activator of transcription) belong to a family of cytoplasmic transcription factors that can be phosphorylated by a ligand binding to its cell surface receptor. STAT5 is tyrosine phosphorylated in response to IL-2, IL-3, IL-7, IL-15, GM-CSF, growth hormone, prolactin, erythropoietin and thrombopoietin. Serine phosphorylation is also required for maximal transcriptional activity. NCoA-1/SRC-1 acts as a co-activator for both the α - and β -isoforms of STAT5.

PURIFICATION

The Rabbit IgG is purified by site-modified Epitope Affinity Purification.

SPECIFICITY

This antibody recognizes STAT5 (pY694) with a phosphorylated sites of Tyr694. It does not cross-react with non-phosphospecific peptide.

FORMULATION

This affinity purified antibody is supplied in sterile Tris-buffered saline (pH7.2) containing antibody stabilizer

STORAGE

The antibodies are stable for 12 months from date of receipt when stored at -20°C to -70°C . The antibodies can be stored at 2°C - 8°C for three month without detectable loss of activity. Avoid repeated freezing-thawing cycles.

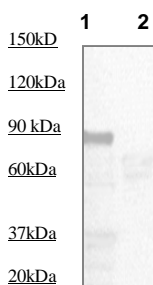
APPLICATIONS/SUGGESTED WORKING DILUTIONS

Western Blot	0.1-1 $\mu\text{g/ml}$
ELISA	0.01-0.1 $\mu\text{g/ml}$
Immunoprecipitation	2-5 $\mu\text{g/ml}$
IHC	1:100
Flow cytometry	Not tested

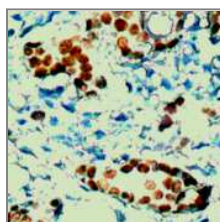
MOLECULAR WEIGHT:	92 kDa
POSITIVE CONTROL:	GH stimulated mouse liver
CELLULAR LOCATION:	Nuclear

Optimal dilutions should be determined by researchers for the specific applications.

DATA ATTACHMENTS



Western Blot: The tissue lysate derived from GH stimulated mouse liver was immunoblotted by Rabbit anti STAT5 (pY694) (Cat#500-9334) antibody at 1:500 (lane 1). Lane 2 is a negative control.



IHC: Human breast carcinoma tissue stained with Anti-STAT5 (pY694) (Cat#500-9334) antibody at 1:100 for 10 min @ RT. Staining of formalin-fixed tissue requires boiling tissue sections in 10 mM Citrate Buffer, pH 6.0 for 10 min followed by cooling at RT for 20 min.

REFERENCES

Lin, J.X., et al. Cloning of human Stat5B. Reconstitution of interleukin-2-induced Stat5A and Stat5B DNA binding activity in COS-7 cells. J. Biol Chem. 271: 10738, 2006

FOR RESEARCH USE ONLY.

AbboMax, Inc 1161 Ringwood Ct. Suite 100, San Jose, California 95131, USA
1 408-321-9898 (Tel). 1 408-321-9896 (Fax). 1-866-628-9898 www.abbomax.com info@abbomax.com