

AbboMax, Inc

Innovation at Work

Rabbit anti-STAT5 Polyclonal Antibody

Synonym: Signal transducer and activator of transcription 5 (STAT5)

Order Information

Description: Rabbit anti -STAT5
Catalogue#: 500-8364
Lot#: See the label
Size: 100 ug/200 ul
Host: Rabbit
Clone: N/A
Application: ELISA, WB, IHC
Reactivity: Hu, Rt, Ms, Bv, Dg.

ANTIGEN PREPARATION

A synthetic peptide surrounding to the C-terminus of STAT5 protein from human, mouse and rat origins.

BACKGROUND

STAT proteins (Signal transducer and activator of transcription) belong to a family of cytoplasmic transcription factors that can be phosphorylated by a ligand binding to its cell surface receptor. STAT5 is tyrosine phosphorylated in response to IL-2, IL-3, IL-7, IL-15, GM-CSF, growth hormone, prolactin, erythropoietin and thrombopoietin. Serine phosphorylation is also required for maximal transcriptional activity. NCoA-1/SRC-1 acts as a co-activator for both the α - and β -isoforms of STAT5.

PURIFICATION

The Rabbit IgG is purified by Epitope Affinity Purification.

SPECIFICITY

This antibody recognizes STAT5. It does not cross-react to other STAT proteins

FORMULATION

This affinity purified antibody is supplied in sterile Tris-buffered saline (pH7.2) containing antibody stabilizer

STORAGE

The antibodies are stable for 12 months from date of receipt when stored at -20°C to -70°C . The antibodies can be stored at 2°C - 8°C for three month without detectable loss of activity. Avoid repeated freezing-thawing cycles.

APPLICATIONS/SUGGESTED WORKING DILUTIONS

| | |
|---------------------|---------------------------|
| Western Blot | 0.1-1 $\mu\text{g/ml}$ |
| ELISA | 0.01-0.1 $\mu\text{g/ml}$ |
| Immunoprecipitation | 2-5 $\mu\text{g/ml}$ |
| IHC | 1:100 |
| Flow cytometry | Not tested |

| | |
|---------------------------|-------------|
| MOLECULAR WEIGHT: | 92 kDa |
| POSITIVE CONTROL: | Mouse liver |
| CELLULAR LOCATION: | Nuclear |

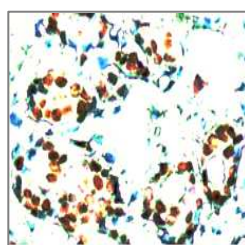
Optimal dilutions should be determined by researchers for the specific applications.

DATA ATTACHMENTS

150kD
120kDa
90 kDa
60kDa
37kDa
20kDa



Western Blot: The tissue lysate derived from mouse liver was immunoblotted by Rabbit anti STAT5 (Cat#500-8364) antibody at 1:500



IHC: Human breast carcinoma tissue stained with Anti-STAT5 (Cat#500-8364) antibody at 1:100 for 10 min @ RT. Staining of formalin-fixed tissue requires boiling tissue sections in 10 mM Citrate Buffer, pH 6.0 for 10 min followed by cooling at RT for 20 min.

REFERENCES

Lin, J.X., et al. Cloning of human Stat5B. Reconstitution of interleukin-2-induced Stat5A and Stat5B DNA binding activity in COS-7 cells. J. Biol Chem. 271: 10738, 2006

FOR RESEARCH USE ONLY.

AbboMax, Inc 1161 Ringwood Ct. Suite 100, San Jose, California 95131, USA
1 408-321-9898 (Tel). 1 408-321-9896 (Fax). 1-866-628-9898 www.abbomax.com info@abbomax.com