

AbboMax, Inc

Innovation at Work

Mouse anti 14-3-3 gamma Monoclonal Antibody

Alternate Names: YWHAG; Protein kinase C inhibitor protein 1, KCIP-1; Tyrosine 3-monooxygenase/tryptophan 5-monooxygenase activation protein; gamma polypeptide, YWHAG

ANTIGEN PREPARATION

14.3.3 gamma recombinant protein of human origin

BACKGROUND

The 14-3-3 proteins are a family of small, widely expressed, highly conserved cytosolic proteins. 14-3-3 proteins bind to and influence the activities of a diverse group of molecules involved in signal transduction, cell cycle regulation and apoptosis, including Raf, PKC, Bad, Cbl, and c-Bcr. Interactions between 14-3-3 and target proteins are strongly influenced by the phosphorylation state of 14-3-3 and the target protein. Expression of 14-3-3 gamma is higher in cells from vascular smooth muscle, skeletal and heart muscle. In Alzheimer's disease and Down syndrome level of 14-3-3 gamma in brain increases significantly.

PURIFICATION

The Mouse IgG1.k is purified by Protein G Affinity Purification.

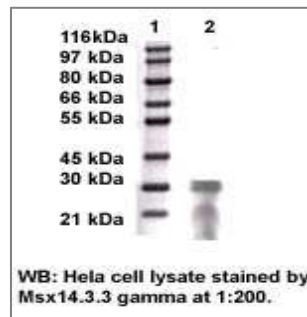
SPECIFICITY

This antibody recognizes ~28-33 kDa of human 14.3.3 gamma and shows no cross-reaction with other isoforms of 14.3.3 proteins. This antibody reacts with human. The other species are not tested.

APPLICATIONS/SUGGESTED WORKING DILUTIONS

Western Blot	1-2 µg/ml
ELISA	0.01-0.1 µg/ml
Immunoprecipitation	2-5 µg/ml
IHC	Not tested
Flow cytometry	Not tested

DATA ATTACHMENTS



REFERENCES

Zhi-jun Luo, et al. Identification of the 14.3.3 Domains Important for Self-association and Raf Binding. J. Bio. Chem 270 (40), 23681-23687, 1995

FOR RESEARCH USE ONLY.

AbboMax, Inc 1161 Ringwood Ct. Suite 100, San Jose, California 95131, USA
1 408-321-9898 (Tel). 1 408-321-9896 (Fax). 1-866-628-9898 www.abbomax.com info@abbomax.com

Order Information

Description: Mouse anti-14.3.3 gamma
Catalogue#: 500-6964
Lot#: See the label
Size: 100 µg/200 µl
Host: Mouse
Isotyping: IgG1.k
Application: WB, IP
Reactivity: Hu