

AbboMax, Inc

Innovation at Work

Order Information

Description: Rabbit anti -Bcl-2
Catalogue#: 500-4734
Lot#: See the label
Size: 100 ug/200 ul
Host: Rabbit
Clone: N/A
Application: ELISA, WB, IHC
Reactivity: Hu. Rt. Ms. Bv. Dg.

Rabbit anti-BCL-2

Synonym: B-cell lymphoma protein 2, (alpha, beta isoforms), BCL2, BCL-2.

ANTIGEN PREPARATION

A synthetic peptide derived from C-terminus of human BCL-2 protein. This sequence is identical in human, rat, mouse, bovine and dog.

BACKGROUND

The Bcl-2 gene codes for a 25 kDa protein which has been implicated in the control of cell death by apoptosis, in normal tissues, expression of bcl-2 is restricted to cells and tissues that are characterized by apoptotic cell turnover. Bcl-2 protein exerts a survival function in response to a wide range of apoptotic stimuli through inhibition of mitochondrial cytochrome c release, thus it is also considered as an inner mitochondrial membrane protein which can be expressed in lymphoma and breast carcinoma cells. This protein modulates mitochondrial calcium homeostasis and proton flux. Several phosphorylation sites have been identified within Bcl-2 including Thr56, Ser70, Thr74, Ser87 and Thr127 which may be the targets of the ASK1/MKK7/JNK1 pathway, and that phosphorylation of Bcl-2 may be a marker for mitotic events. Mutation of Bcl-2 at Thr56 or Ser87 inhibits its anti-apoptotic activity during glucocorticoid-induced apoptosis of T lymphocytes. Phosphorylation of Bcl-2 at Ser70 by IL-3/JNK may be required for its enhanced antiapoptotic functions.

PURIFICATION

The Rabbit IgG is purified by site-modified Epitope Affinity Purification.

SPECIFICITY

This antibody recognizes Bcl-2 with the phosphorylation site Thr129. It does not cross-react with non-phosphospecific peptide.

FORMULATION

This affinity purified antibody is supplied in sterile Tris-buffered saline (pH7.2) containing antibody stabilizer

STORAGE

The antibodies are stable for 12 months from date of receipt when stored at -20°C to -70°C . The antibodies can be stored at 2°C - 8°C for three month without detectable loss of activity. Avoid repeated freezing-thawing cycles.

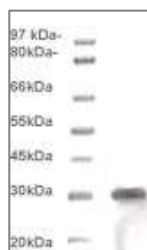
APPLICATIONS/SUGGESTED WORKING DILUTIONS

Western Blot	0.1-1 $\mu\text{g/ml}$
ELISA	0.01-0.1 $\mu\text{g/ml}$
Immunoprecipitation	2-5 $\mu\text{g/ml}$
IHC	2-5 $\mu\text{g/ml}$
Flow cytometry	Not tested

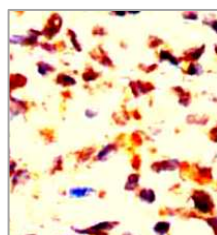
MOLECULAR WEIGHT:	26 kDa
POSITIVE CONTROL:	Raji cells
CELLULAR LOCATION:	Cytoplasmic

Optimal dilutions should be determined by researchers for the specific applications.

DATA ATTACHMENTS



Western Blot: The whole cell lysate derived from Raji cell was separated in 10% SDS-PAGE, transferred onto NC membrane, and immunoblotted by Rabbit anti -Bcl-2 (Cat#500-4734) antibody at 1:500. An immunoreactive band around ~26 kDa is observed.



Human Jurkat cells stained with Anti-BCL-2 antibody, (Cat# 500-4734) at 1:200 for 10 min @ RT. Staining of formalin-fixed cells requires boiling tissue sections in 10 mM Citrate Buffer, pH 6.0 for 10 min followed by cooling at RT for 20 min.

REFERENCES

Camlica H., et al. Statistical interpretation of CA125 and Bcl-2 in serum of patients with late stage ovarian cancer. Am J Clin Oncol, 2008 Dec, 31(6): 585-8.

FOR RESEARCH USE ONLY.