

AbboMax, Inc

Innovation at Work

Order Information

Description: Rabbit anti eNOS
Catalogue#: 500-4114
Lot#: See the label
Size: 100 ug/200 ul
Host: Rabbit
Clone: N/A
Application: ELISA, WB, IHC
Reactivity: Hu, Rt, Ms, Dog, Pig, Cow

Rabbit anti eNOS Antibody

Synonym: Endothelial Nitric Oxide Synthase (eNOS), Nitric oxide synthase 3 (NOS3)

ANTIGEN PREPARATION

A synthetic peptide corresponding to the internal sequence (residing in 550-650aa) of human eNOS protein. This sequence is identical among human, rat, mouse, bovine origins.

BACKGROUND

NOS catalyzes the oxidization of L-arginine to produce L-citrulline and NO. Nitric oxide (NO) is an inorganic, gaseous free radical that carries a variety of messages between cells. Vasorelaxation, neurotransmission and cytotoxicity can all be enhanced through cellular response to NO. NO production is mediated by members of the nitric oxide synthase (NOS) family. There are three types of NOS: two constitutive isoforms, brain or neuronal NOS (b or nNOS, type I) & endothelial cell NOS (eNOS, type III), and one inducible isoform (iNOS, type II). iNOS is found in a variety of cell types including macrophages, hepatocytes, synoviocytes, and smooth muscle cells. Cytokines such as interferon-gamma (IFN), tumor necrosis factor (TNF), interleukin-1 and -2, and lipopolysaccharides (LPS) cause an increase in iNOS mRNA, protein, and activity levels. The phosphorylation of eNOS by Protein kinase C was associated with an increase in NO production.

PURIFICATION

The Rabbit IgG is purified by Epitope Affinity Purification.

SPECIFICITY

This antibody only recognizes ~130 kDa of human eNOS. It does not detect human inducible NOS or rat brain NOS. It also reacts with mouse and rat eNOS protein. The other species are not tested.

FORMULATION

This affinity purified antibody is supplied in sterile phosphate-buffered saline (pH7.2) containing antibody stabilizer

STORAGE

The antibodies are stable for 12 months from date of receipt when stored at -20°C to -70°C. The antibodies can be stored at 2°C-8°C for three month without detectable loss of activity. Avoid repeated freezing-thawing cycles.

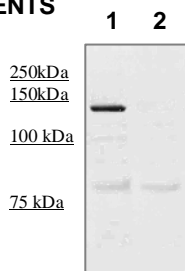
APPLICATIONS/SUGGESTED WORKING DILUTIONS

Western Blot	0.1-1 µg/ml
ELISA	0.01-0.1 µg/ml
Immunoprecipitation	2-5 µg/ml
IHC	1:50 µg/ml
Flow cytometry	Not tested

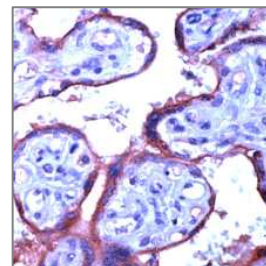
MOLECULAR WEIGHT:	140 kDa
POSITIVE CONTROL:	placenta
CELLULAR LOCATION:	Cytoplasmic

Optimal dilutions should be determined by researchers for the specific applications.

DATA ATTACHMENTS



Western Blot: The tissue lysate derived from mouse lung was immunoprecipitated by Rabbit anti eNOS, (Cat#500-4114), then immuno-blotted by the same antibody at 1:500 (lane 1), Lane 2: negative control.



IHC: Human placenta tissue stained with Anti-eNOS antibody, (Cat# 500-4114) at 1:50 for 10 min @ RT. Staining of formalin-fixed tissue requires boiling tissue sections in 10 mM Citrate Buffer, pH 6.0 for 10 min followed by cooling at RT for 20 min.

REFERENCES

Louis J. Ignarro, Functional interaction of endothelial nitric oxide synthase with a voltage-dependent anion channel. Proc Natl Acad Sci U S A. 99(20): 13108-13113, 2002.

FOR RESEARCH USE ONLY.

AbboMax, Inc 1161 Ringwood Ct. Suite 100, San Jose, California 95131, USA
1 408-321-9898 (Tel). 1 408-321-9896 (Fax). 1-866-628-9898 www.abbomax.com info@abbomax.com