

AbboMax, Inc

Innovation at Work

Rabbit anti TGF- β Antibody

ANTIGEN PREPARATION

A synthetic peptide derived from human TGF-beta protein.

PURIFICATION

The Rabbit IgG is purified by Epitope affinity purification

FORMULATION

This affinity purified antibody is supplied in sterile Phosphate-buffered saline (pH7.2) containing antibody stabilizer.

STORAGE

The antibodies are stable for 12 months from date of receipt when stored at -20°C to -70°C . Upon initial thawing, apportion into working aliquots and store at -70°C for up to six months. The antibodies can be stored at 2°C - 8°C for one month without detectable loss of activity. Avoid repeated freezing-thawing cycles.

SPECIFICITY

This antibody recognizes ~13 kDa of TGF-beta. It reacts with human, rat and mouse. The other species are not tested.

APPLICATIONS AND SUGGESTED WORKING DILUTIONS

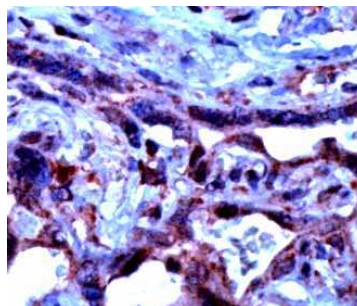
Western Blot	0.1-1 $\mu\text{g/ml}$
ELISA	0.01-0.1 $\mu\text{g/ml}$
Immunoprecipitation	2-5 $\mu\text{g/ml}$
IHC	2-5 $\mu\text{g/ml}$
Flow cytometry	Not tested

Optimal dilutions should be determined by researchers for the specific applications.

MOLECULAR WEIGHT: 13 kDa

POSITIVE CONTROL: Breast carcinomas (MCF-7), Placenta, intestine

CELLULAR LOCATION: Membrane and cytoplasmic



Human placenta stained with Anti-TGF-beta antibody (Cat# 500-3944) at 1:100 for 10 min @ RT. Staining of formalin-fixed tissue requires boiling tissue sections in 10 mM Citrate Buffer, pH 6.0 for 10 min followed by colling at RT for 20 min.

FOR RESEARCH USE ONLY.

Order Information

Description: Rabbit anti TGF β
Catalogue#: 500-3944
Lot#: See the label
Size: 100 $\mu\text{g}/200 \text{ ul}$
Host: Rabbit
Clone: N/A
Application: ELISA, WB, IHC
Reactivity: Hu/Rt/Ms