

# AbboMax, Inc

Innovation at Work

## Tubulin beta Epitope Specific Rabbit Antibody

Synonym: Tubulin- beta; TUBB; TUBB1, 5; M40

### Order Information

Description: Rabbit anti Tubulin beta  
Catalogue#: 500-3814  
Lot#: See the label  
Size: 100 ug/200 ul  
Host: Rabbit  
Clone: N/A  
Application: WB, IP, IHC  
Reactivity: Hu, Ms, Rt, Bv, Dg

### ANTIGEN PREPARATION

A synthetic peptide corresponding to aa 416-430 of human tubulin beta. This sequence is identical among human, rat, mouse, bovine, guinea pig, chicken, gerbil, frog, yeast, fungi, sea urchin, Myxamoeba and plasmodium.

### BACKGROUND

Tubulin is the major building block of microtubules which is essential in cell structures, transportation and mitosis. This superfamily is composed of six distinct families. Alpha, beta, and gamma tubulin families are found in all eukaryotes. The alpha and beta tubulins represent the major components of microtubules, while gamma tubulin plays a critical role in the nucleation of microtubule assembly. There are multiple alpha and beta tubulin genes, which are highly conserved among species. The abundance of Gamma tubulin is less than 1% of the level of either alpha or beta tubulin. It shares approximately 28-32% identity with alpha tubulin from various organisms and 32-36% identity with beta tubulins. The detection, localization and characterization of proteins involved in microtubule function is fundamental to the understanding of mitosis, meiosis and the microtubule cytoskeleton.

### PURIFICATION

The rabbit antibody is purified by affinity purification.

### FORMULATION

This affinity purified antibody is supplied in sterile Phosphate-buffered saline (pH7.2) containing antibody stabilizer

### SPECIFICITY

This antibody reacts with human. The other species are not tested.

### STORAGE

The antibodies are stable for 12 months from date of receipt when stored at  $-20^{\circ}\text{C}$  to  $-70^{\circ}\text{C}$ . The antibodies can be stored at  $2^{\circ}\text{C}$ - $8^{\circ}\text{C}$  for three month without detectable loss of activity. Avoid repeated freezing-thawing cycles.

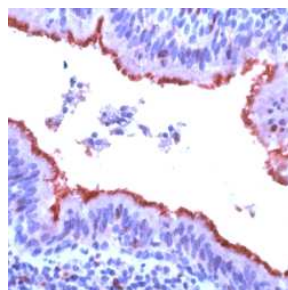
### APPLICATIONS/SUGGESTED WORKING DILUTIONS

Western Blot	1-2 ug/ml
ELISA	Not tested
Immunoprecipitation	2-5 $\mu\text{g/ml}$
IHC	1:200
Flow cytometry	Not tested

<b>MOLECULAR WEIGHT:</b>	50 kDa
<b>POSITIVE CONTROL:</b>	Hela cells, Lung tissue
<b>CELLULAR LOCATION:</b>	Cytoplasm

Optimal dilutions should be determined by researchers for the specific applications.

### DATA ATTACHMENTS



**IHC:** Human lung stained with Anti-Tubulin beta, cat# 500-3814 at 1:200 for 30 min, RT. (Staining of formalin-fixed tissues requires boiling tissue section in 10 mM Citrate Buffer, pH 6.0 for 10 min followed by cooling at RT for 20 min.

### REFERENCES:

Wang, HW, Nogales E. Nucleotide-dependent bending flexibility of tubulin regulates microtubule assembly. Nature 435 (7044): 911-915, 2005.

**FOR RESEARCH USE ONLY.**

AbboMax, Inc 1161 Ringwood Ct. Suite 100, San Jose, California 95131, USA  
1 408-321-9898 (Tel). 1 408-321-9896 (Fax). 1-866-628-9898 www.abbomax.com info@abbomax.com