

AbboMax, Inc

Innovation at Work

Rabbit anti TGF- β 2 Antibody

ANTIGEN PREPARATION

A synthetic peptide derived from C-terminus of human TGF-beta 2 protein.

PURIFICATION

The Rabbit IgG is purified by Epitope affinity purification

FORMULATION

This affinity purified antibody is supplied in sterile Phosphate-buffered saline (pH7.2) containing antibody stabilizer.

STORAGE

The antibodies are stable for 12 months from date of receipt when stored at -20°C to -70°C . Upon initial thawing, apportion into working aliquots and store at -70°C for up to six months. The antibodies can be stored at 2°C - 8°C for one month without detectable loss of activity. Avoid repeated freezing-thawing cycles.

SPECIFICITY

This antibody recognizes ~13 kDa of TGF-beta 2, not TGF-beta 1 and less extense of TGF-beta 3. It reacts with human, rat and mouse. The other species are not tested.

APPLICATIONS AND SUGGESTED WORKING DILUTIONS

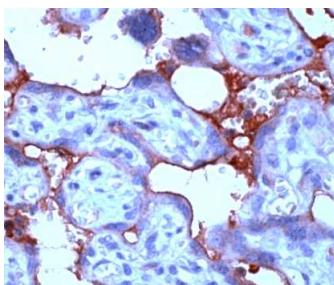
Western Blot	0.1-1 $\mu\text{g/ml}$
ELISA	0.01-0.1 $\mu\text{g/ml}$
Immunoprecipitation	2-5 $\mu\text{g/ml}$
IHC	2-5 $\mu\text{g/ml}$
Flow cytometry	Not tested

Optimal dilutions should be determined by researchers for the specific applications.

MOLECULAR WEIGHT: ~13 kDa

POSITIVE CONTROL: Placenta

CELLULAR LOCATION: Membrane and cytoplasmic



Human placenta stained with Anti-TGF-beta 2 antibody (Cat# 500-3784) at 1:50 for 10 min @ RT. Staining of formalin-fixed tissue requires boiling tissue sections in 10 mM Citrate Buffer, pH 6.0 for 10 min followed by colling at RT for 20 min.

Order Information

Description: Rabbit anti TGF β 2
Catalogue#: 500-3784
Lot#: See the label
Size: 100 $\mu\text{g}/200$ ul
Host: Rabbit
Clone: N/A
Application: ELISA, WB, IHC
Reactivity: Hu/Rt/Ms

FOR RESEARCH USE ONLY.