

AbboMax, Inc

Innovation at Work

Rabbit anti MMP-2 Polyclonal Antibody

Alternate Names: Matrix Metalloproteinase 2 (MMP2); Gelatinase A;
72 kDa type IV collagenase precursor

Order Information

Description: Rabbit anti-MMP-2
Catalogue#: 500-3654
Lot#: See the label
Size: 100 ug/200 ul
Host: Rabbit
Clone: N/A
Application: ELISA, WB, IHC
Reactivity: Hu, Rt, Ms, Ck, Dg

ANTIGEN PREPARATION

A synthetic peptide corresponding to C-term of human MMP2. This sequence is identical among human, rat, mouse, chicken, dog and bovine.

BACKGROUND

Matrix metalloproteinases (MMPs) belong to a family of proteinases that target many extracellular matrix proteins including additional proteinases, growth factors, cell surface receptors and adhesion molecules. MMPs contain common domain structures that include a signal sequence, a propeptide, a catalytic domain, and a hemopexin-like (Hpx) domain. The MMP activity requires proteolytic cleavage of MMPs in order to generate active MMPs by release of the inhibitory propeptide domain from the whole molecules. MMP-2, MMP-3, MMP-7, MMP-9 and MMP-13 have been characterized as important factors for normal tissue remodeling during embryo development and wound healing, tumor invasion, angiogenesis, carcinogenesis and apoptosis. MMP activities are correlated with cancer metastatic process.

PURIFICATION

The Rabbit IgG is purified by Epitope Affinity Purification.

SPECIFICITY

This antibody recognizes ~62 and 72 kDa of human MMP2 protein. This antibody reacts with human, rat, mouse. The other species are not tested.

FORMULATION

This affinity purified antibody is supplied in sterile Phosphate buffered saline (pH7.2) containing antibody stabilizer

STORAGE

The antibodies are stable for 12 months from date of receipt when stored at -20°C to -70°C. The antibodies can be stored at 2°C-8°C for three month without detectable loss of activity. Avoid repeated freezing-thawing cycles.

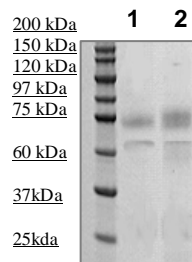
APPLICATIONS/SUGGESTED WORKING DILUTIONS

Western Blot	0.1-1 µg/ml
ELISA	0.01-0.1 µg/ml
Immunoprecipitation	2-5 µg/ml
IHC	2-5 µg/ml
Flow cytometry	Not tested

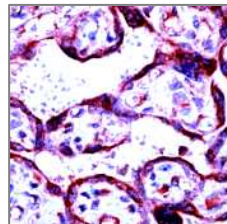
MOLECULAR WEIGHT:	62kDa, 72 kDa
POSITIVE CONTROL:	Breast cancer
CELLULAR LOCATION:	Cytoplasmic and extracellular matrix

Optimal dilutions should be determined by researchers for the specific applications.

DATA ATTACHMENTS



Western Blot: The protein derived from the LOVO whole cell lysate (lane 1) or the concentrated serum free culture medium of LOVO were resolved onto 10% SDS-PAGE, transferred to NC membrane, followed by an immunoblotting with Rabbit anti-MMP-2 (Cat#500-3654) at 1:1000.



IHC: Human placenta stained with Anti-MMP-2 antibody, (Cat# 500-3654) at 1:100 for 10 min @ RT. Staining of formalin-fixed tissue requires boiling tissue sections in 10 mM Citrate Buffer, pH 6.0 for 10 min followed by cooling at RT for 20 min.

REFERENCES

Brigitte Lelongt, et al. Matrix Metalloproteinases MMP2 and MMP9 Are Produced in Early Stages of Kidney Morphogenesis but Only MMP9 Is Required for Renal Organogenesis In Vitro. J. Cell Biol. 1997. 136(6), 1363-1373.

FOR RESEARCH USE ONLY.