

AbboMax, Inc

Innovation at Work

Order Information

Description: Rabbit anti Connexin43
Catalogue#: 500-2744
Lot#: See the label
Size: 100 ug/200 ul
Host: Rabbit
Clone: N/A
Application: ELISA, WB, IHC
Reactivity: Hu/Rt/Ms

Rabbit anti Connexin 43 Antibody

ANTIGEN PREPARATION

A synthetic peptide corresponding to a segment of the 3rd cytoplasmic domain of human/rat connexin 43 protein.

PURIFICATION

The Rabbit IgG is purified by Epitope Affinity Purification

FORMULATION

This affinity purified antibody is supplied in sterile Phosphate-buffered saline (pH7.2) containing antibody stabilizer.

STORAGE

The antibodies are stable for 12 months from date of receipt when stored at -20°C to -70°C . Upon initial thawing, apportion into working aliquots and store at -70°C for up to six months. The antibodies can be stored at 2°C - 8°C for one month without detectable loss of activity. Avoid repeated freezing-thawing cycles.

SPECIFICITY

This antibody recognizes 43 kDa of Connexin 43 derived from heart tissue or A549 cell lysate by Western blot. It reacts with human, rat and mouse. The other species are not tested.

APPLICATIONS AND SUGGESTED WORKING DILUTIONS

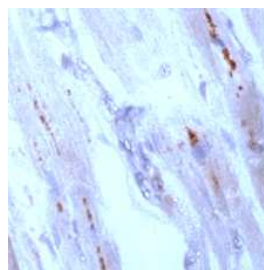
Western Blot	0.1-1 $\mu\text{g/ml}$
ELISA	0.01-0.1 $\mu\text{g/ml}$
Immunoprecipitation	2-5 $\mu\text{g/ml}$
IHC	Not tested
Flow cytometry	Not tested

Optimal dilutions should be determined by researchers for the specific applications.

MOLECULAR WEIGHT: 43 kDa

POSITIVE CONTROL: A549 or Heart

CELLULAR LOCATION: Cytoplasmic



Human heart stained with Anti-Connexin 43 antibody, Cat# 500-2744 at 1:50 for 10 min @ RT. Staining of formalin-fixed tissue requires boiling tissue sections in 10 mM Citrate Buffer, pH 6.0 for 10 min followed by colling at RT for 20 min.

FOR RESEARCH USE ONLY.