

AbboMax, Inc

Innovation at Work

Rabbit anti P27^{Kip1} Polyclonal Antibody

Alternate Names: CDKN4; KIP1; MEN1B; MEN4; P27KIP1

Order Information

Description: Rabbit anti -p27^{Kip1}
Catalogue#: 500-2604
Lot#: See the label
Size: 100 ug/200 ul
Host: Rabbit
Clone: N/A
Application: ELISA, WB, IHC
Reactivity: Hu, Ms, Rt

ANTIGEN PREPARATION

A synthetic peptide corresponding to the C-terminus of human p27. This sequence is identical among human, rat, mouse, bovine, dog origins.

BACKGROUND

The p27Kip1 gene codes for a cyclin-dependent kinase inhibitor implicated in G1 arrest by transforming growth factor beta, cell-cell contact, agents that elevate cyclic AMP, and the growth-inhibitory drug rapamycin. p27 binds to and inhibits complexes formed by cyclin E-cdk2, cyclin A-cdk2, and cyclin D-cdk4. The involvement of p27 in the negative regulation of cell proliferation suggests that it may also function as a tumor suppressor gene. The degradation of p27, which is triggered by its CDK dependent phosphorylation and subsequent ubiquitination by SCF complexes, is required for the cellular transition from quiescence to the proliferative state.

PURIFICATION

The Rabbit IgG is purified by Site-specific Epitope Affinity Purification.

SPECIFICITY

This antibody recognizes ~27 kDa of human P27Kip1 protein. It also reacts with mouse and rat. The other species are not tested.

FORMULATION

This affinity purified antibody is supplied in sterile Phosphate-buffered saline (pH7.2) containing antibody stabilizer.

STORAGE

The antibodies are stable for 12 months from date of receipt when stored at -20°C to -70°C. The antibodies can be stored at 2°C-8°C for three month without detectable loss of activity. Avoid repeated freezing-thawing cycles.

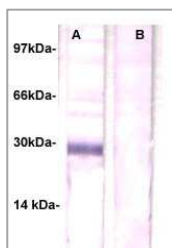
APPLICATIONS/SUGGESTED WORKING DILUTIONS

Western Blot	0.1-1 µg/ml
ELISA	0.01-0.1 µg/ml
Immunoprecipitation	2-5 µg/ml
IHC	2-5 µg/ml
Flow cytometry	Not tested

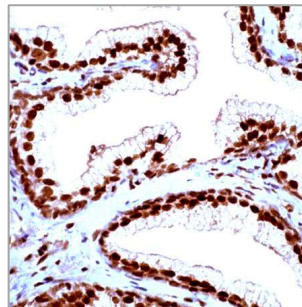
MOLECULAR WEIGHT:	~27 kDa
POSITIVE CONTROL:	Hela
CELLULAR LOCATION:	Nuclear

Optimal dilutions should be determined by researchers for the specific applications.

DATA ATTACHMENTS



WB: The whole cell lysate derived from Hela cells was loaded in 12% SDS-PAGE, transferred onto NC membrane, and immune-probed by Rabbit anti-p27Kip1 (Cat#500-2604) at 1:500. An immune-reactive band is observed around ~27kDa (lane A). This band was abolished by immunizing peptide (lane B).



IHC: Human prostate tissue stained with Anti-p27Kip1 antibody, (Cat# 500-2604) at 1:100 for 10 min @ RT. Staining of formalin-fixed tissue requires boiling tissue sections in 10 mM Citrate Buffer, pH 6.0 for 10 min followed by cooling at RT for 20 min.

REFERENCES:

Shin, I., et al. PKB/Akt mediates cell-cycle progression by phosphorylation of p27(Kip1) at threonine 157 and modulation of its cellular localization. Nat. Med. 8 (10), 1145-1152 (2002)

FOR RESEARCH USE ONLY.

AbboMax, Inc 1161 Ringwood Ct. Suite 100, San Jose, California 95131, USA
1 408-321-9898 (Tel). 1 408-321-9896 (Fax). 1-866-628-9898 www.abbomax.com info@abbomax.com