

AbboMax, Inc

Innovation at Work

Rabbit anti CD20 Antibody

Alternate Names: MS4A1, CD20, CD20 antigen, CD20 receptor, B-Lymphocyte cell-surface antigen B1

Order Information

Description: Rabbit anti CD20
Catalogue#: 500-2564
Lot#: See the label
Size: 100 ug/200 ul
Host: Rabbit
Clone: N/A
Application: ELISA, WB, IHC
Reactivity: Hu., Dog., Bovine

ANTIGEN PREPARATION

A synthetic peptide corresponding to C-terminus of human CD20 protein.

BACKGROUND

CD20, a non-glycosylated protein, belongs to a member of the membrane-spanning 4A gene family. The molecular weight is at a range of ~34-37kDa depending on the degree of the protein phosphorylation. The CD20 antigen is present on human pre B lymphocytes and B lymphocytes at all stages of maturation. Thus, it plays an important role in the development and differentiation of B-cells into plasma cells. Low level of CD20 expression appears on normal T lymphocytes. Combination of chemo and humanized CD20 antibodies has been reported in clinical study of lymphoma diseases.

PURIFICATION

The Rabbit IgG is purified by Epitope Affinity Purification.

SPECIFICITY

This antibody recognizes ~34 kDa of human CD20. The other species are not tested

FORMULATION

This affinity purified antibody is supplied in sterile Phosphate-buffered saline (pH7.2) containing antibody stabilizer

STORAGE

The antibodies are stable for 12 months from date of receipt when stored at -20°C to -70°C . The antibodies can be stored at 2°C - 8°C for three month without detectable loss of activity. Avoid repeated freezing-thawing cycles.

APPLICATIONS/SUGGESTED WORKING DILUTIONS

Western Blot	0.1-1 $\mu\text{g/ml}$
ELISA	0.01-0.1 $\mu\text{g/ml}$
Immunoprecipitation	2-5 $\mu\text{g/ml}$
IHC	0.5-2 $\mu\text{g/ml}$
Flow cytometry	Not tested

MOLECULAR WEIGHT:	34 kDa
POSITIVE CONTROL:	Jurkat Cell Lysate
CELLULAR LOCATION:	Nuclear

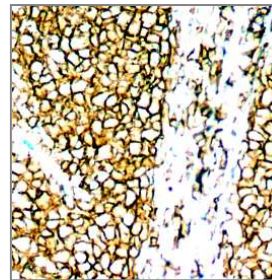
Optimal dilutions should be determined by researchers for the specific applications.

DATA ATTACHMENTS

250kDa
150kDa
116kDa
97kDa
80kDa
66 kDa
50kDa
40 kDa
30 kDa
21kDa



Western Blot: The whole cell lysates derived from human spleen were immunoblotted by Rabbit anti-CD20 (Cat#500-2564 at 1:1000).



IHC: Human tonsil tissue was stained with Anti-CD20 antibody, (Cat# 500-2564) at 1:200 for 10 min @ RT. Staining of formalin-fixed tissue requires boiling tissue sections in 10 mM Citrate Buffer, pH 6.0 for 10 min followed by cooling at RT for 20 min.

REFERENCES:

Smith MR, Rituximab (monoclonal anti-CD20 antibody): mechanisms of action and resistance. Oncogene, 2003 Oct 20;22(47):7359-68.

FOR RESEARCH USE ONLY.

AbboMax, Inc 1161 Ringwood Ct. Suite 100, San Jose, California 95131, USA
1 408-321-9898 (Tel). 1 408-321-9896 (Fax). 1-866-628-9898 www.abbomax.com info@abbomax.com