

AbboMax, Inc

Innovation at Work

Rabbit anti ki-67 Antibody

ANTIGEN PREPARATION

A synthetic peptide derived from human ki-67 protein.

PURIFICATION

The Rabbit IgG is purified by Epitope affinity purification

FORMULATION

This affinity purified antibody is supplied in sterile Phosphate-buffered saline (pH7.2) containing antibody stabilizer.

STORAGE

The antibodies are stable for 12 months from date of receipt when stored at -20°C to -70°C . Upon initial thawing, apportion into working aliquots and store at -70°C for up to six months. The antibodies can be stored at 2°C - 8°C for one month without detectable loss of activity. Avoid repeated freezing-thawing cycles.

SPECIFICITY

This antibody recognizes ~67 kDa of Ki-67. It reacts with human, rat and mouse. The other species are not tested.

APPLICATIONS AND SUGGESTED WORKING DILUTIONS

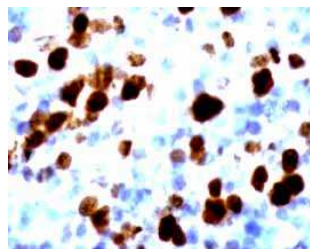
Western Blot	0.1-1 $\mu\text{g/ml}$
ELISA	0.01-0.1 $\mu\text{g/ml}$
Immunoprecipitation	2-5 $\mu\text{g/ml}$
IHC	2-5 $\mu\text{g/ml}$
Flow cytometry	Not tested

Optimal dilutions should be determined by researchers for the specific applications.

MOLECULAR WEIGHT: 67 kDa

POSITIVE CONTROL: Breast carcinomas and lymph node

CELLULAR LOCATION: Nuclei



Human lymph node stained with Anti-Ki-67 antibody (Cat# 500-1874) at 1:200 for 10 min @ RT. Staining of formalin-fixed tissue requires boiling tissue sections in 10 mM Citrate Buffer, pH 6.0 for 10 min followed by colling at RT for 20 min.

Order Information

Description: Rabbit anti Ki-67
Catalogue#: 500-1874
Lot#: See the label
Size: 100 $\mu\text{g}/200 \text{ ul}$
Host: Rabbit
Clone: N/A
Application: ELISA, WB, IHC
Reactivity: Hu/Rt/Ms

FOR RESEARCH USE ONLY.