

AbboMax, Inc

Innovation at Work

Order Information

Description: Rabbit anti CD30
Catalogue#: 500-13484
Lot#: See the label
Size: 100 ug/200 ul
Host: Rabbit
Clone: N/A
Application: IHC, WB
Reactivity: Hu

Rabbit anti CD30

ANTIGEN PREPARATION

Recombinant protein encoding aa 1-150 of human CD30 protein.

BACKGROUND

CD30, a single chain glycoprotein, is synthesized as a 90kDa precursor which is processed in the Golgi complex into a membrane-bound phosphorylated mature 105/120kDa glycoprotein. The CD30/Ki-1 antigen is expressed by mononuclear Hodgkin and multinucleated Reed-Sternberg cells in Hodgkin's disease, by the tumor cells of a majority of anaplastic large cell lymphomas, and by a varying proportion of activated T and B cells.

PURIFICATION

The rabbit polyclonal antibody is purified by affinity purification.

SPECIFICITY

This antibody reacts with human. The other species are not tested.

FORMULATION

This affinity purified antibody is supplied in sterile Phosphate-buffered saline (pH7.2) containing antibody stabilizer

STORAGE

The antibodies are stable for 12 months from date of receipt when stored at -20°C to -70°C . The antibodies can be stored at 2°C - 8°C for three month without detectable loss of activity. Avoid repeated freezing-thawing cycles.

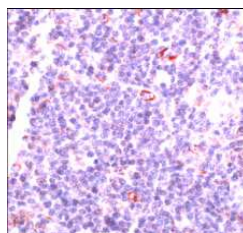
APPLICATIONS/SUGGESTED WORKING DILUTIONS

Western Blot	0.1-1 $\mu\text{g/ml}$
ELISA	Not Tested
Immunoprecipitation	Not Tested
IHC	1:50 $\mu\text{g/ml}$
Flow cytometry	Not Tested

MOLECULAR WEIGHT:	120kDa/95kDa
POSITIVE CONTROL:	Raji cells. Hodgkin's lymphoma
CELLULAR LOCATION:	Cell membrane

Optimal dilutions should be determined by researchers for the specific applications.

DATA ATTACHMENTS:



Human Hodgkin's lymphoma stained with anti-CD30, Cat# 500-13484

REFERENCES:

Newman, P.J., et al. *Science* **247**, 1219, (1990)

FOR RESEARCH USE ONLY.

AbboMax, Inc 1161 Ringwood Ct. Suite 100, San Jose, California 95131, USA
1 408-321-9898 (Tel). 1 408-321-9896 (Fax). 1-866-628-9898 www.abbomax.com info@abbomax.com