

AbboMax, Inc

Innovation at Work

Rabbit anti 14-3-3 zeta Polyclonal Antibody

Alternate Names: YWHAZ; KCIP-1; MGC111427; MGC126532; MGC138156

Order Information

Description: Rabbit anti-14.3.3 zeta
Catalogue#: 500-12604
Lot#: See the label
Size: 100 ug/200 ul
Host: Rabbit
Clone: N/A
Application: WB, IHC(P)
Reactivity: Hu, Rat, Ms

ANTIGEN PREPARATION

A synthetic peptide corresponding to the internal sequence (134-149aa) of human zeta.

BACKGROUND

The 14-3-3 proteins are a family of small, widely expressed, highly conserved cytosolic proteins. 14-3-3 proteins bind to and influence the activities of a diverse group of molecules involved in signal transduction, cell cycle regulation and apoptosis, including Raf, PKC, Bad, Cbl, and c-Bcr. Interactions between 14-3-3 and target proteins are strongly influenced by the phosphorylation state of 14-3-3 and the target protein. 14.3.3 zeta protein is a ubiquitous and abundant in brain. 14.3.3 zeta binds primarily to Raf noncatalytic sequences without inhibiting the Ras-Raf association or Raf-catalyzed MEK phosphorylation, thus it might act as a sweeper of misfolded protein by facilitating the formation of aggregates (inclusion bodies). Hence, 14-3-3 zeta may be considered as an auxiliary therapeutic tool in the protein aggregation disorders.

PURIFICATION

The Rabbit IgG is purified by Epitope- Affinity Purification.

SPECIFICITY

This antibody recognizes ~30 kDa of human 14.3.3 zeta protein. This antibody reacts with human, mouse and rat. The other species are not tested.

FORMULATION

This affinity purified antibody is supplied in sterile Phosphate buffered saline (pH7.2) containing antibody stabilizer

STORAGE

The antibodies are stable for 12 months from date of receipt when stored at -20°C to -70°C. The antibodies can be stored at 2°C-8°C for three month without detectable loss of activity. Avoid repeated freezing-thawing cycles.

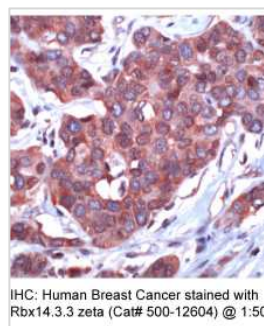
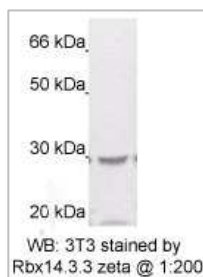
APPLICATIONS/SUGGESTED WORKING DILUTIONS

Western Blot	1-2 µg/ml
ELISA	0.01-0.1 µg/ml
Immunoprecipitation	2-5 µg/ml
IHC	1:50
Flow cytometry	Not tested

MOLECULAR WEIGHT:	30 kDa
POSITIVE CONTROL:	3T3, Breast Ca
CELLULAR LOCATION:	Cytoplasmic

Optimal dilutions should be determined by researchers for the specific applications.

DATA ATTACHMENTS



REFERENCES

Zhi-jun Luo, et al. Identification of the 14.3.3 Domains Important for Self-association and Raf Binding. J. Bio. Chem 270 (40), pp. 23681-23687, 1995

FOR RESEARCH USE ONLY.

AbboMax, Inc 1161 Ringwood Ct. Suite 100, San Jose, California 95131, USA
1 408-321-9898 (Tel). 1 408-321-9896 (Fax). 1-866-628-9898 www.abbomax.com info@abbomax.com