

# AbboMax, Inc

Innovation at Work

## Rabbit anti IRS-1 Antibody

Synonym: Insulin-receptor substrate 1 (IRS-1).

### ANTIGEN PREPARATION

A synthetic peptide corresponding to the intra domain of human IRS-1.

### BACKGROUND

Insulin Receptor Substrate-1 (IRS-1), 165 kDa cytoplasmic docking protein, is one of the major endogenous substrates of the insulin receptor kinase. IRS-1 contains multiple tyrosine phosphorylation motifs that serve as docking sites for SH2 domain containing proteins, which mediate the metabolic and growth promoting functions of insulin. IRS-1 also contains over 30 potential serine/threonine phosphorylation sites. Ser312 of IRS-1 is phosphorylated by JNK and IKK and Ser789 is phosphorylated by SIK-2, a member of AMPK family. The phosphorylation of Tyr612 and Ser636/639 is mediated by the PKC and mTOR pathways, respectively and phosphorylation at Ser1101 is mediated by PKC, resulting in an inhibition of insulin signaling in the cell, suggesting a potential mechanism for insulin resistance in some models of obesity.

### PURIFICATION

The Rabbit IgG is purified by Epitope Affinity Purification.

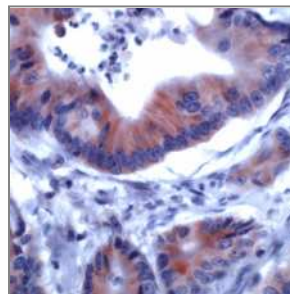
### SPECIFICITY

This antibody recognizes ~165 kDa of human IRS-1. It also reacts with mouse and rat. The other species are not tested.

### APPLICATIONS/SUGGESTED WORKING DILUTIONS

Western Blot	0.1-1 µg/ml
ELISA	0.01-0.1 µg/ml
Immunoprecipitation	2-5 µg/ml
IHC	0.5-2 µg/ml
Flow cytometry	Not tested

### DATA ATTACHMENTS



Human Colon tissue was stained with Anti-IRS-1 antibody (Cat# 500-12594) at 1:200 for 10 min @ RT. Staining of formalin-fixed tissue requires boiling tissue sections in 10 mM Citrate Buffer, pH 6.0 for 10 min followed by cooling at RT for 20 min.

### REFERENCES

Li, Y. et al. (2004) J. Biol. Chem. 279, 45304–45307.

### Order Information

Description:	Rabbit anti IRS-1
Catalogue#:	500-12594
Lot#:	See the label
Size:	100 µg/200 µl
Host:	Rabbit
Clone:	N/A
Application:	ELISA, WB, IHC
Reactivity:	Hu, Rt, Ms

**FOR RESEARCH USE ONLY.**

AbboMax, Inc 1161 Ringwood Ct. Suite 100, San Jose, California 95131, USA  
1 408-321-9898 (Tel). 1 408-321-9896 (Fax). 1-866-628-9898 www.abbomax.com info@abbomax.com