

AbboMax, Inc

Innovation at Work

Mouse anti-c-erbB-2/HER-2

Synonym: human epidermal growth factor Receptor 2 (Her-2); p185erbB2, MLN19, C-erbB-2, NEU proto-oncogene, Tyrosine kinase-type cell surface receptor HER2, CD340 antigen

Order Information

Description: Ms anti c-erbB-2/HER-2
Catalogue#: 500-12424
Lot#: See the label
Size: 100 ug/200 ul
Host: Mouse
Clone: S-495
Isotyping: IgG1.k
Application: ELISA, WB, IHC
Reactivity: Hu, Ms, Rt.

ANTIGEN PREPARATION

A synthetic peptide corresponding to the C-terminus of Her2 protein. This sequence is identical in human, mouse, and rat.

BACKGROUND

Oncoprotein Her-2/Neu/ c-erbB-2 belongs to one of the four members of the ErbB receptor family. They are transmembrane receptor-like tyrosine kinases which can be autophosphorylated without ligand binding process when it is overexpressed in breast cancers. Her2 is an important biomarker in breast cancer diagnosis. The antibodies/ heregulin can suppress phosphorylation of HER2 on tyrosine Y1248. Endogenous anti-HER2 antibodies can effectively suppress HER2 kinase activity and downstream signaling to inhibit the transformed phenotype of HER2-expressing tumor cells. Thus, anti-Her2 antibodies have been used widely in the treatment of the breast cancer and other carcinomas.

PURIFICATION

The Mouse IgG is purified by Isotyping-specific Affinity Purification.

SPECIFICITY

This antibody recognizes Her-2 protein. It cross-reacts with human, rat and mouse. The other species was not tested.

FORMULATION

This affinity purified antibody is supplied in sterile Phosphate-buffered saline (pH7.2) containing antibody stabilizer

STORAGE

The antibodies are stable for 12 months from date of receipt when stored at -20°C to -70°C . The antibodies can be stored at 2°C - 8°C for three month without detectable loss of activity. Avoid repeated freezing-thawing cycles.

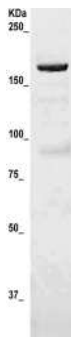
APPLICATIONS/SUGGESTED WORKING DILUTIONS

Western Blot	0.1-1 $\mu\text{g/ml}$
ELISA	0.01-0.1 $\mu\text{g/ml}$
Immunoprecipitation	2-5 $\mu\text{g/ml}$
IHC	2-5 $\mu\text{g/ml}$
Flow cytometry	5-10 $\mu\text{g/ml}$

MOLECULAR WEIGHT:	~185 kDa
POSITIVE CONTROL:	SK-BR-3 cell lysate
CELLULAR LOCATION:	Membrane

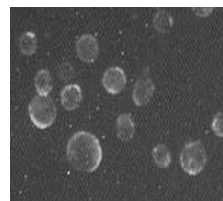
Optimal dilutions should be determined by researchers for the specific applications.

DATA ATTACHMENTS



Western Blot:

The whole cell lysates from SK-BR-3 were resolved onto 10% SDS-PAGE, transferred onto NC membrane, and followed by an immunoblotting with Mouse anti Her-2 (Cat#500-12424) antibody at 1:500. An immunoreactive band is observed around ~185 kDa.



Immuno-fluorescent staining:

SK-BR-3 cells were fixed and immunoblotted by Mouse anti Her-2 (Cat# 500-12424) incubation at a 1:250 dilution.

REFERENCES

Xiao-Feng Le et al (2000) Anti-HER2 Antibody and Heregulin Suppress Growth of HER2-Overexpressing Human Breast Cancer Cells through Different Mechanisms. Clinical Cancer Research Vol. 6, 260-270.

FOR RESEARCH USE ONLY.