

# AbboMax, Inc

Innovation at Work

## Rabbit anti-Phospho-BCL-2(pSer<sup>70</sup>)

Synonym: B-cell lymphoma protein 2, (alpha, beta isoforms), BCL2, BCL-2.

### Order Information

Description: Rabbit anti -Bcl-2(pS70)  
Phosphospecific  
Catalogue#: 500-11574  
Lot#: See the label  
Size: 100 ug/200 ul  
Host: Rabbit  
Clone: N/A  
Application: ELISA, WB, IHC  
Reactivity: Hu

### ANTIGEN PREPARATION

A synthetic peptide derived from epitope -ARTSPL- with the phosphorylation site Ser70 of human BCL-2 protein.

### BACKGROUND

The Bcl-2 gene codes for a 25 kDa protein which has been implicated in the control of cell death by apoptosis, in normal tissues, expression of bcl-2 is restricted to cells and tissues that are characterized by apoptotic cell turnover. Bcl-2 protein exerts a survival function in response to a wide range of apoptotic stimuli through inhibition of mitochondrial cytochrome c release, thus it is also considered as an inner mitochondrial membrane protein which can be expressed in lymphoma and breast carcinoma cells. This protein modulates mitochondrial calcium homeostasis and proton flux. Several phosphorylation sites have been identified within Bcl-2 including Thr56, Ser70, Thr74, Ser87 and Thr127 which may be the targets of the ASK1/MKK7/JNK1 pathway, and that phosphorylation of Bcl-2 may be a marker for mitotic events. Mutation of Bcl-2 at Thr56 or Ser87 inhibits its anti-apoptotic activity during glucocorticoid-induced apoptosis of T lymphocytes. Phosphorylation of Bcl-2 at Ser70 by IL-3/JNK may be required for its enhanced antiapoptotic functions.

### PURIFICATION

The Rabbit IgG is purified by site-modified Epitope Affinity Purification.

### SPECIFICITY

This antibody recognizes Bcl-2 with the phosphorylation site Ser70. It does not cross-react with non-phosphospecific peptide.

### FORMULATION

This affinity purified antibody is supplied in sterile Tris-buffered saline (pH7.2) containing antibody stabilizer

### STORAGE

The antibodies are stable for 12 months from date of receipt when stored at -20°C to -70°C. The antibodies can be stored at 2°C-8°C for three month without detectable loss of activity. Avoid repeated freezing-thawing cycles.

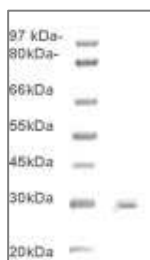
### APPLICATIONS/SUGGESTED WORKING DILUTIONS

Western Blot	0.1-1 µg/ml
ELISA	0.01-0.1 µg/ml
Immunoprecipitation	2-5 µg/ml
IHC	2-5 µg/ml
Flow cytometry	Not tested

<b>MOLECULAR WEIGHT:</b>	26 kDa
<b>POSITIVE CONTROL:</b>	UV-treated Raji cells
<b>CELLULAR LOCATION:</b>	Cytoplasmic & Mitochondrial membrane

Optimal dilutions should be determined by researchers for the specific applications.

### DATA ATTACHMENTS



**Western Blot:** The whole cell lysate derived from UV treated Raji cell was separated in 10% SDS-PAGE, transferred onto NC membrane, and immunoblotted by Rabbit anti - Bcl-2((pS70) (Cat#500-11574) antibody at 1:500. An immunoreactive band around ~26 kDa is observed.

### REFERENCES

Camlica H., et al. Statistical interpretation of CA125 and Bcl-2 in serum of patients with late stage ovarian cancer. Am J Clin Oncol, 2008 Dec, 31(6): 585-8.

**FOR RESEARCH USE ONLY.**