

AbboMax, Inc

Innovation at Work

Tubulin Gamma Epitope Specific Rabbit Antibody

Synonym: Tubulin-gamma1, 2; GCP1; MGC131994; TUBG; TUBG1,2; Xgam

ANTIGEN PREPARATION

A synthetic peptide corresponding to aa 432-451 of human tubulin.

BACKGROUND

Tubulin gamma, a member of the tubulin superfamily, is a ubiquitous and highly conserved protein within the microtubule organizing centre (MTOC). It is an essential structural protein for cell growth organizes microtubule arrays in the nucleus and cytoplasm. Tubulin gamma-depleted cells fail to form functional spindles and arrest during nuclear division. The phosphorylation of Tubulin gamma at Tyr445 plays a regulatory role in microtubule formation. The incidence rate for this phosphorylation event peaks during G1. The abundance of Gamma tubulin is less than 1% of the level of either alpha or beta tubulin. It shares approximately 28-32% identity with alpha tubulin from various organisms and 32-36% identity with beta tubulins. The detection, localization and characterization of proteins involved in microtubule function is fundamental to the understanding of mitosis, meiosis and the microtubule cytoskeleton. Antibodies reacting specifically with gamma tubulin serve as an essential tool in the detection of the presence and role of this molecule in various cellular settings. Gamma tubulin 1 and Gamma tubulin 2 are different isoforms that are 97% homologous.

PURIFICATION

The rabbit antibody is purified by affinity purification.

SPECIFICITY

This antibody reacts with human. The other species are not tested.

FORMULATION

This affinity purified antibody is supplied in sterile Phosphate-buffered saline (pH7.2) containing antibody stabilizer

STORAGE

The antibodies are stable for 12 months from date of receipt when stored at -20°C to -70°C . The antibodies can be stored at 2°C - 8°C for three month without detectable loss of activity. Avoid repeated freezing-thawing cycles.

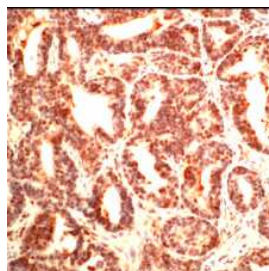
APPLICATIONS/SUGGESTED WORKING DILUTIONS

Western Blot	1-2 ug/ml
ELISA	Not tested
Immunoprecipitation	2-5 $\mu\text{g/ml}$
IHC	1:100
Flow cytometry	Not tested

MOLECULAR WEIGHT:	50 kDa
POSITIVE CONTROL:	Hela cells, Colon carcinoma
CELLULAR LOCATION:	Cytoplasm and nucleus

Optimal dilutions should be determined by researchers for the specific applications.

DATA ATTACHMENTS



IHC: Human colon carcinoma stained with Anti-Tubulin gamma, cat# 500-10334 at 1:100 for 30 min, RT. (Staining of formalin-fixed tissues requires boiling tissue section in 10 mM Citrate Buffer, pH 6.0 for 10 min followed by cooling at RT for 20 min.

REFERENCES:

Zheng Y *et al.* Nucleation of microtubule assembly by a gamma-tubulin-containing ring complex. *Nature* **378**:578-83 (1995).

FOR RESEARCH USE ONLY.

AbboMax, Inc 1161 Ringwood Ct. Suite 100, San Jose, California 95131, USA
1 408-321-9898 (Tel). 1 408-321-9896 (Fax). 1-866-628-9898 www.abbomax.com info@abbomax.com

Order Information

Description: Rabbit anti Tubulin gamma
Catalogue#: 500-10334
Lot#: See the label
Size: 100 ug/200 ul
Host: Rabbit
Clone: N/A
Application: WB,IHC
Reactivity: Hu