

# AbboMax, Inc

Innovation at Work

## Rabbit anti Claudin 10 Antibody

### ANTIGEN PREPARATION

A synthetic peptide from C-terminus of human claudin 10 protein.

### BACKGROUND

The claudin superfamily consists of many structurally related proteins in humans. These proteins, which include claudin 1 through 18, are important structural and functional components of tight junctions in paracellular transport. Claudins are located in both epithelial and endothelial cells in all tight junction-bearing tissues. Claudins, which consist of four trans-membrane domains and two extracellular loops, make up tight junction strands.

### PURIFICATION

The rabbit antibody is purified by affinity purification.

### SPECIFICITY

This antibody reacts with human, rat and mouse. Others not tested.

### APPLICATIONS/SUGGESTED WORKING DILUTIONS

Western Blot	Not tested
ELISA	Not tested
Immunoprecipitation	2-5 $\mu$ g/ml
IHC	1-2 $\mu$ g/ml
Flow cytometry	Not tested

### FORMULATION

This affinity purified antibody is supplied in sterile Phosphate-buffered saline (pH7.2) containing antibody stabilizer

### STORAGE

The antibodies are stable for 12 months from date of receipt when stored at  $-20^{\circ}\text{C}$  to  $-70^{\circ}\text{C}$ . The antibodies can be stored at  $2^{\circ}\text{C}$ - $8^{\circ}\text{C}$  for three month without detectable loss of activity. Avoid repeated freezing-thawing cycles.

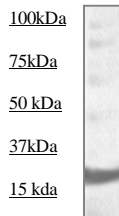
### Order Information

Description:	Rabbit anti Claudin 10
Catalogue#:	500-10244
Lot#:	See the label
Size:	100 $\mu$ g/200 $\mu$ l
Host:	Rabbit
Clone:	N/A
Application:	Immunohistology
Reactivity:	Hu. Rt. Ms

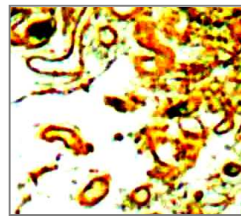
<b>MOLECULAR WEIGHT:</b>	21 kDa
<b>POSITIVE CONTROL:</b>	Brain and Skeletal muscle
<b>CELLULAR LOCATION:</b>	Cellular junction/gap

Optimal dilutions should be determined by researchers for the specific applications.

### DATA ATTACHMENTS



WB: The tissue lysate derived from mouse skeletal muscle was immunoprobed by Rabbit anti-Claudin 10 (Cat#500-10244) at 1:500. An immunoreactive band is observed around ~21kDa.



Human brain tissue stained with Anti-Claudin 10 antibody, (Cat# 500-10244) at 1:100 for 10 min @ RT. Staining of formalin-fixed tissue requires boiling tissue sections in 10 mM Citrate Buffer, pH 6.0 for 10 min followed by cooling at RT for 20 min.

### REFERENCES:

Hashizume A; Ueno T; Furuse M; Tsukita S; Nakanishi Y; Hieda Y (2004), Expression patterns of claudin family of tight junction membrane proteins in developing mouse submandibular gland. Dev Dyn 231(2), 425-431.

**FOR RESEARCH USE ONLY.**