

AbboMax, Inc

Innovation at Work

Rabbit anti Rho Antibody

Alternate Names:

Ras homolog gene family, member A variant (RhoA), ARHA, RhoH12,

ANTIGEN PREPARATION

A synthetic peptide corresponding to the C-terminus human Rho protein

BACKGROUND

Ras homolog gene family consists of RhoA, RhoB, RhoC proteins. These proteins interact directly with protein kinase (Rho kinase) to serve as downstream effectors of the activated GTPase. The Rho proteins are involved in the regulation of the actin cytoskeleton. Activation of Rho to the GTP bound state promotes formation of stress fibers and is required for the formation and maintenance of focal adhesions. Pathways stimulated by cytokines, hormones and various forms of stress utilize p21 proteins of the Rho family². Possible mediators for these responses include protein kinase such as p120PKN, and p150, ROK α /Rho-A kinase, myosin light chain (MLC), phosphatase and PIP 5-kinase³

PURIFICATION

The Rabbit IgG is purified by Epitope-specific Affinity Purification.

SPECIFICITY

This antibody recognizes ~24 kDa of human RhoA protein. It also reacts with mouse and rat. The other species are not tested.

APPLICATIONS/SUGGESTED WORKING DILUTIONS

Western Blot	0.1-1 μ g/ml
ELISA	0.01-0.1 μ g/ml
Immunoprecipitation	2-5 μ g/ml
IHC	2-5 μ g/ml
Flow cytometry	Not tested

FORMULATION

This affinity purified antibody is supplied in sterile Phosphate buffered saline (pH7.2) containing antibody stabilizer

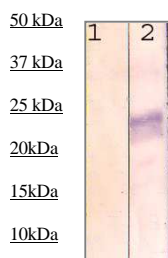
STORAGE

The antibodies are stable for 12 months from date of receipt when stored at -20°C to -70°C . The antibodies can be stored at 2°C - 8°C for three month without detectable loss of activity. Avoid repeated freezing-thawing cycles.

MOLECULAR WEIGHT:	~24 kDa
POSITIVE CONTROL:	MCF7 Cell Lysate
CELLULAR LOCATION:	N/A

Optimal dilutions should be determined by researchers for the specific applications.

DATA ATTACHMENTS



WB: The cell lysate derived from MCF-7 was immunoprobed by Rabbit anti-Rho (Cat#500-10054) at 1:500. An immunoreactive band is observed around ~24 kDa (2). This band is abolished by pre-incubation with immunizing peptide (1).

REFERENCES:

Zavzavadjian, J.R, Mol. Cell Proteomics 6 (3), 413-424 (2007)

Order Information

Description: Rabbit anti Rho
Catalogue#: 500-10054
Lot#: See the label
Size: 100 μ g/200 μ l
Host: Rabbit
Clone: N/A
Application: ELISA, WB
Reactivity: Hu, Rt, Ms

FOR RESEARCH USE ONLY.

AbboMax, Inc 1161 Ringwood Ct. Suite 100, San Jose, California 95131, USA
1 408-321-9898 (Tel). 1 408-321-9896 (Fax). 1-866-628-9898 www.abbomax.com info@abbomax.com