

# AbboMax, Inc

Innovation at Work

## Order Information

Description: PID/MTA2 Rabbit Antibody  
Catalogue#: 500-10034  
Lot#: See the label  
Size: 100 ug/200 ul  
Host: Rabbit  
Clone: N/A  
Application: ELISA, WB, IP  
Reactivity: Hu, Rt, Ms

## Rabbit anti PID/MTA2

**Alternate Names: Metastasis-associated gene family, member 2 (MTA2); MTA1L1; Metastasis associated gene 1-like 1 (MTA1-L1); p53 target protein in deacetylase complexes (PID).**

### ANTIGEN PREPARATION

A synthetic peptide corresponding to the C-terminus of human PID/MTA2. This sequence is identical within human, rat, mouse, bovine and dog origins.

### BACKGROUND

The p53 tumor-suppressor gene integrates numerous signals that control cell life and death. Several novel molecules involved in p53 pathway, including PID/MTA2, were recently discovered. The transcriptional activity of p53 is modulated by protein stability and acetylation. PID/MTA2, also termed MTA1-L1, was found to be a subunit of nucleosome remodeling and deacetylating (NRD/NuRD) complex. PID/MTA2 modulates the enzymatic activity of the histone deacetylase complex and its expression reduces the levels of acetylated p53. Deacetylation of p53 by PID/MTA2 represses p53-dependent transcriptional activation and modulates p53-mediated cell growth arrest and apoptosis. PID/MTA2 is ubiquitously expressed in human tissues.

### PURIFICATION

The rabbit polyclonal antibody is purified by epitope-affinity purification.

### SPECIFICITY

This antibody recognizes 75 kDa of human HeLa cell lysate. It also reacts with mouse and rat. The other species are not tested.

### FORMULATION

This affinity purified antibody is supplied in sterile Phosphate-buffered saline (pH7.2) containing antibody stabilizer

### STORAGE

The antibodies are stable for 12 months from date of receipt when stored at  $-20^{\circ}\text{C}$  to  $-70^{\circ}\text{C}$ . The antibodies can be stored at  $2^{\circ}\text{C}$ - $8^{\circ}\text{C}$  for three month without detectable loss of activity. Avoid repeated freezing-thawing cycles.

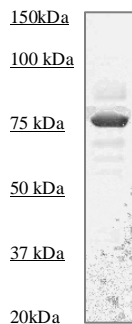
### APPLICATIONS/SUGGESTED WORKING DILUTIONS

|                     |                           |
|---------------------|---------------------------|
| Western Blot        | 0.1-1 $\mu\text{g/ml}$    |
| ELISA               | 0.01-0.1 $\mu\text{g/ml}$ |
| Immunoprecipitation | 2-5 $\mu\text{g/ml}$      |
| IHC                 | Not Tested                |
| Flow cytometry      | Not tested                |

|                           |                  |
|---------------------------|------------------|
| <b>MOLECULAR WEIGHT:</b>  | 75 kDa           |
| <b>POSITIVE CONTROL:</b>  | HeLa Cell Lysate |
| <b>CELLULAR LOCATION:</b> | N/A              |

Optimal dilutions should be determined by researchers for the specific applications.

### DATA ATTACHMENTS



Western blot analysis:  
The whole cell lysate derived from HeLa cell line was probed by rabbit anti-PID/MTA2 (Cat#500-10034) at 1:500 dilutions.

### REFERENCES:

Luo, J., et al., Deacetylation of p53 modulates its effect on cell growth and apoptosis. Nature, **408**, 377-381 (2000).

**FOR RESEARCH USE ONLY.**

AbboMax, Inc 1161 Ringwood Ct. Suite 100, San Jose, California 95131, USA  
1 408-321-9898 (Tel). 1 408-321-9896 (Fax). 1-866-628-9898 www.abbomax.com info@abbomax.com