

AbboMax, Inc

Innovation at Work

Mouse anti Phosphoserine (pSER) Antibody, Biotin Conjugated

Order Information

Description: Mouse anti pSER,
Biotin Conjugated
Catalogue#: 500-021
Lot#: See the label
Size: 100 ug/200 ul
Host: Mouse
Clone: N/A
Application: ELISA, WB,
Reactivity: Hu/Rt/Ms

ANTIGEN PREPARATION

A chemically linked phosphoserine.

PURIFICATION

The Mouse IgG is purified by affinity chromatography.

FORMULATION

This affinity purified antibody is supplied in sterile Tris-buffered saline (pH7.2) containing antibody stabilizer.

STORAGE

The antibodies are stable for 12 months from date of receipt when stored at -20°C to -70°C . Upon initial thawing, apportion into working aliquots and store at -70°C for up to six months. The antibodies can be stored at 2°C - 8°C for one month without detectable loss of activity. Avoid repeated freezing-thawing cycles.

SPECIFICITY

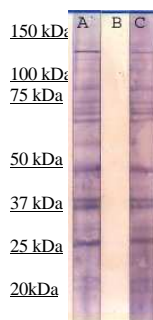
This antibody was conjugated by BIOTIN. This antibody recognizes phospho-serine (phospho-Ser) only. It does not cross react with phospho-Tyrosine or phospho-Threonine.

APPLICATIONS AND SUGGESTED WORKING DILUTIONS

Western Blot	0.1-1 $\mu\text{g/ml}$
ELISA	0.01-0.1 $\mu\text{g/ml}$
Immunoprecipitation	2-5 $\mu\text{g/ml}$
IHC	Not tested
Flow cytometry	Not tested

Optimal dilutions should be determined by researchers for the specific applications.

MOLECULAR WEIGHT:	N/A
POSITIVE CONTROL:	A431 (EGF stimulated)
CELLULAR LOCATION:	N/A



Western Blot Analysis:

The cell lysate derived from EGF-stimulated A431 was resolved onto 12% SDS-PAGE and immunoblotted by Mouse anti pSER (Cat#500-020) at 1:500 (lane A); or pre-incubated by Phosphoserine (lane B) or pre-incubated by phosphotyrosine (lane C). A panel of phosphorylated proteins was observed.

FOR RESEARCH USE ONLY.