

# AbboMax, Inc

*Innovation at Work*

## Mouse anti Phosphoserine Antibody

### ANTIGEN PREPARATION

A chemically linked phosphoserine.

### PURIFICATION

The Mouse IgG is purified by affinity chromatography.

### FORMULATION

This affinity purified antibody is supplied in sterile Tris-buffered saline (pH7.2) containing antibody stabilizer.

### STORAGE

The antibodies are stable for 12 months from date of receipt when stored at  $-20^{\circ}\text{C}$  to  $-70^{\circ}\text{C}$ . Upon initial thawing, apportion into working aliquots and store at  $-70^{\circ}\text{C}$  for up to six months. The antibodies can be stored at  $2^{\circ}\text{C}$ - $8^{\circ}\text{C}$  for one month without detectable loss of activity.

Avoid repeated freezing-thawing cycles.

### SPECIFICITY

This antibody recognizes phospho-serine (phospho-Ser) only. It does not cross react with phospho-Tyrosine or phospho-Threonine.

### APPLICATIONS AND SUGGESTED WORKING DILUTIONS

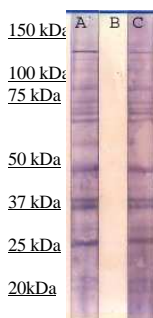
Western Blot	0.1-1 $\mu\text{g/ml}$
ELISA	0.01-0.1 $\mu\text{g/ml}$
Immunoprecipitation	2-5 $\mu\text{g/ml}$
IHC	Not tested
Flow cytometry	Not tested

**Optimal dilutions should be determined by researchers for the specific applications.**

**MOLECULAR WEIGHT:** N/A

**POSITIVE CONTROL:** A431 (EGF stimulated)

**CELLULAR LOCATION:** N/A



#### Western Blot Analysis:

The cell lysate derived from EGF-stimulated A431 was resolved onto 12% SDS-PAGE and immunoblotted by Mouse anti pSER (Cat#500-020) at 1:500 (lane A); or pre-incubated by Phosphoserine (lane B) or pre-incubated by phosphotyrosine (lane C). A panel of phosphorylated proteins was observed.

**FOR RESEARCH USE ONLY.**

### Order Information

Description: Mouse anti pSER  
Catalogue#: 500-020  
Lot#: See the label  
Size: 100  $\mu\text{g}/200 \text{ ul}$   
Host: Mouse  
Clone: N/A  
Application: ELISA, WB,  
Reactivity: Hu/Rt/Ms