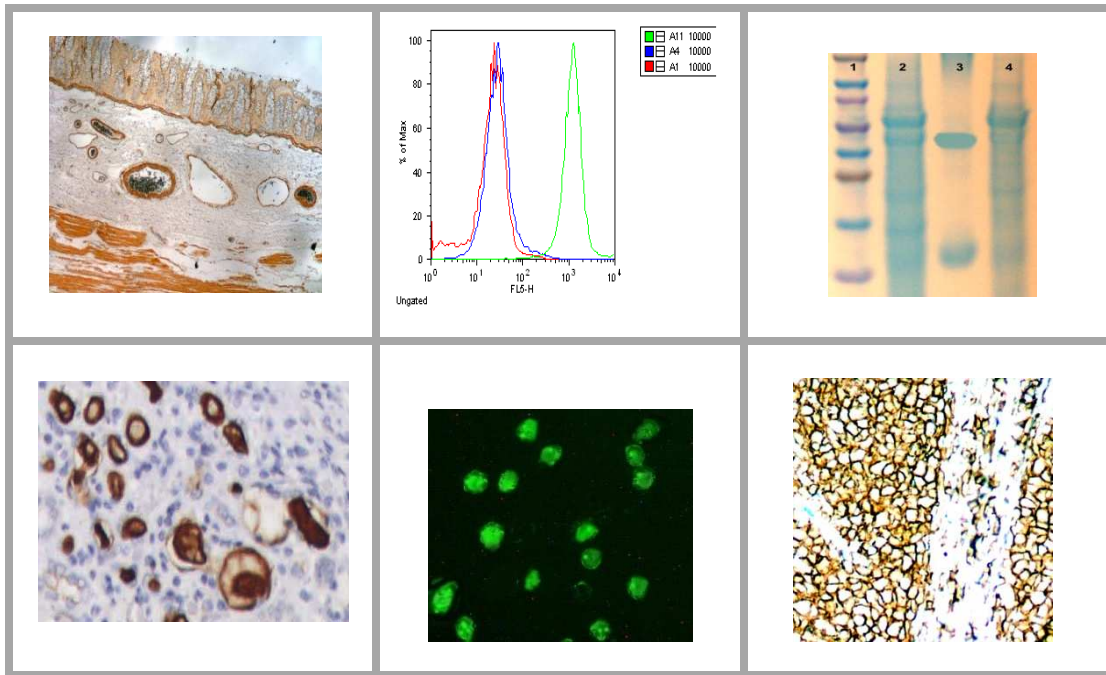


ABBOMAX, INC

Catalogue antibodies and reagents



WWW.ABBOMAX.COM

Contents

1.	Phosphospecific Antibodies.....	P 2-8
2.	Primary Antibodies.....	P 9-42
3.	Epitope-tag Antibodies.....	P 43
4.	Secondary Antibodies	P 43-48
5.	Antibody Reagents	P 49
6.	Assay Kits	P 49
7.	Liposome Reagents.....	P 50-53

AbboMax scientific professionals have been involved in researching, developing and manufacturing high performance immunoassays reagents for many years. We are delivering high quality products to the scientists in life science field. We are the trusted and dependable supplier to many of the international leading research institutes and clinical diagnostic companies. With original manufacturing more than 90% of our products in our own Silicon Valley Core Facility, we are able to provide bulk quantities of most of our products at an economical price. Please contact us for bulk price quote.

Contact information:

AbboMax, Inc

1161 Ringwood Ct, Suite 100
San Jose, California, 95131. USA
Tel: 408-321-9898
Toll Free: 1-866-628-9898 (USA)
Fax: 408-321-9896
Email: info@abbomax.com
Website: www.abbomax.com

Order information

Please place order by phone, fax, email or website

Shipping:

All shipping and handling charges are prepaid by AbboMax and added to the invoice along with the shipment. If you would like to use your own carrier, please supply the account number when the order is placed. Orders are taken before 12:00PM (Pacific Time) can be shipped same day for the next day delivery domestically. All international orders will be shipped international priority using FedEx.

Product Warranty:

AbboMax Inc. warrants its services and products to original purchaser against defects in material and workmanship under normal use and application for a period of one year from date of purchase. AbboMax sole obligation under this warranty shall be to replace defective products that do not perform to our stated specifications. In no case shall AbboMax be liable for incidental or consequential damages. This warranty applies only to products in the original container that have been handled and stored in accordance with AbboMax recommendations. This warranty is in lieu of all other warranties, express or implied, including warranties of merchantability and fitness for a particular purpose.

Phosphospecific Antibodies

Protein phosphorylation is an important event in cell signaling. AbboMax provides you high quality phosphospecific antibodies related to various cellular signal transduction pathways.

Description	Catalogue	Volume	Host	Application	Cross Reactivity	Price
AKT1/PKB α (pS473)	600-220	100 ug	Rabbit	WB, ELISA, IP	Hu, Ms, Rt	\$220
AKT1/PKB α (pS473)	601-050	100 ug	Mouse	WB, ELISA, IP	Hu, Ms, Rt	\$235
AKT1/PKB α (pT34)	600-210	100 ug	Rabbit	WB, ELISA, IP	Hu, Ms, Rt	\$220
AMPK(pS79)	600-250	100 ug	Rabbit	WB, ELISA, IP	Hu	\$230
AMPK-alpha	620-130	100 ug	Rabbit	WB, ELISA, IP	Hu, Rt, Ms, Bv, Ck, Dg, In	\$320
AMPK-alpha(pT172)	620-120	100 ug	Rabbit	WB, ELISA, IP	Hu, Rt, Ms, Bv, Ck, Dg, In	\$320
BAD(pS137)	601-190	100 ug	Mouse	IHC, ELISA	Hu, Ms, Rt	\$255
BCAR3 (phospho)	600-080	100 ug	Rabbit	WB, IHC	Hu, Rt, Ms	\$330
β -Catenin (pS33)	601-980	100 ug	Rabbit	ELISA, WB, IP	Hu, Ms, Rt	\$325
β -Catenin (pS33/37)	601-990	100 ug	Rabbit	ELISA, WB, IP	Hu, Ms, Rt	\$355
β -Catenin (pS675)	500-8864	100 ug	Rabbit	WB, IP	Hu, Ms, Rt	\$255
β -Catenin (pY228)	602--040	100 ug	Rabbit	ELISA, WB, IP	Hu, Ms, Rt	\$299
β -Catenin (pY280)	602--060	100 ug	Rabbit	ELISA, WB, IP	Hu, Ms, Rt	\$299
β -Catenin (pY96)	602--020	100 ug	Rabbit	ELISA, WB, IP	Hu, Ms, Rt	\$299
BCL-2 (pTyr129)	500-8874	100 ug	Rabbit	WB, IP	Hu, Ms, Rt	\$245
BCL-2(pS70)	500-11574	100 ug	Rabbit	IHC, ELISA	Hu, Ms	\$250
BCL-2(pT56)	500-11584	100 ug	Rabbit	IHC, ELISA	Hu, Ms	\$255
BCL-XL(pS62)	500-11594	100 ug	Rabbit	IHC, WB, ELISA, IP	Hu, Ms	\$245

CamKII(pT286)	600-270	100 ug	Rabbit	WB, ELISA, IP	Hu	\$230
CD136 (RON) (pY1238)	601-910	100 ug	Rabbit	ELISA, WB, IP	Hu	\$299
CD136 (RON) (pY1238/1239)	601-900	100 ug	Rabbit	ELISA, WB, IP	Hu	\$395
CD136 (RON) (pY1239)	601-920	100 ug	Rabbit	ELISA, WB, IP	Hu	\$299
CDC2 (pY15) (CDK1)	602--160	100 ug	Rabbit	ELISA, WB, IP	Hu, Ck, Bv	\$315
CDC25b(pS42)	601-610	100 ug	Rabbit	Elisa, WB, IHC	Hu	\$375
CDC25C(pS216)	601-180	100 ug	Mouse	WB, ELISA, IP	Hu	\$240
CDC25C(pS216)	601-640	100 ug	Rabbit	Elisa, WB, IHC	Hu	\$345
CDC6(pS54)	601-080	100 ug	Mouse	WB, ELISA, IP	Hu, Ms, Rt	\$225
c-erbB2 (pY1221/Y1222)	500-11744	100 ug	Rabbit	IHC, ELISA	Hu, Ms	\$225
c-erbB2 (pY877)	500-11754	100 ug	Rabbit	IHC, ELISA	Hu, Ms	\$225
C-erbB3/HER3 (pY1283)	602--520	100 ug	Rabbit	ELISA, WB, IP	Hu	\$330
c-Jun (pT239)	500-11604	100 ug	Rabbit	IHC, WB, ELISA, IP	Hu, Ms	\$250
c-Jun(pS63)	600-390	100 ug	Mouse	WB, ELISA, IP	Hu, Ms, Rt	\$220
c-Jun(pS63)	601-330	100 ug	Rabbit	ELISA, IHC(P), WB	Hu/Rt/Ms	\$335
c-Myc (pS62)	601-120	100 ug	Mouse	WB, ELISA, IP	Hu, Ms, Rt	\$230
Connexin 43 (pS368)	602-960	100ug	Rabbit	ELISA, WB, IHC	Hu, Ms, Rt	\$295
CREB(pS133)	600-280	100 ug	Rabbit	WB, ELISA, IP	Hu	\$230
CSF-1R (pY723)	602--110	100 ug	Rabbit	ELISA, WB, IP	Hu, Ms, Rt	\$295
Desmin (pT76/77)	602--280	100 ug	Rabbit	ELISA, WB, IP	Hu, Ms, Rt	\$360
EGFR(pS1070)	500-11684	100 ug	Rabbit	IHC, ELISA	Hu, Ms	\$240
EGFR(pY1092)	500-12224	100 ug	Rabbit	IHC, ELISA	Hu, Ms, Rt	\$235

EGFR(pY1173)	600-290	100 ug	Rabbit	WB, ELISA, IP	Hu	\$230
ELK-1(pS383)	500-12234	100 ug	Rabbit	IHC, IP ELISA	Hu, Ms, Rt	\$245
ELK1(pS389)	500-11694	100 ug	Rabbit	IHC, ELISA, IP	Hu, Ms	\$255
ELK1(pT417)	500-11704	100 ug	Rabbit	IHC, ELISA, IP	Hu, Ms	\$250
ER(Paired S305)	620-230	100ug	Rabbit	IHC,ELISA	Hu, Ms	\$225
ER(pS118)	600-300	100 ug	Rabbit	WB, ELISA, IP	Hu	\$230
ER(pS167)	600-310	100 ug	Rabbit	WB, ELISA, IP	Hu	\$230
ER(pS305)(phosphospecific)	620-220	100 ug	Rabbit	IHC,ELISA	Hu, Ms	\$290
ER-beta(pS106)	601-140	100 ug	Mouse	IHC, ELISA	Hu, Ms, Rt	\$245
ERK1/2 (P44-MAPK) (pT202/pY204)	602--310	100 ug	Rabbit	ELISA, WB, IP	Hu, Ms, Rt, Ck, Canis	\$355
Estrogen Receptor (pS118)	500-12264	100 ug	Rabbit	IHC, WB, ELISA	Hu, Ms	\$319
Estrogen Receptor (pS167)	500-8924	100 ug	Rabbit	WB, IP	Hu	\$319
FAK(pY576)	600-320	100 ug	Rabbit	WB, ELISA, IP	Hu	\$230
GALBP(pS6)	601-160	100 ug	Mouse	WB, ELISA, IP	Hu, Cn, Bv	\$245
GATA1(pS142)	500-11714	100 ug	Rabbit	IHC, WB, ELISA, IP	Hu, Ms	\$290
GR(pS203)	601-110	100 ug	Mouse	WB, ELISA, IP	hu, Ms,	\$235
GSK3a(pS21)	600-330	100 ug	Rabbit	WB, ELISA, IP	Hu, Ms, Rt	\$230
GSK3a(pS21)	601-200	100 ug	Mouse	WB, ELISA, IP	Hu, Ms, Rt	\$250
GSK-3b (pY216)	602--190	100 ug	Rabbit	ELISA, WB, IP	Hu, Ms, Rt	\$299
GSK3b(pS9)	600-130	100 ug	Mouse	WB, ELISA, IP	Hu, Ms, Rt	\$235
GSK3b(pS9)	600-340	100 ug	Rabbit	WB, ELISA, IP	Hu, Ms, Rt	\$230
HSP27(pS78)	601-210	100 ug	Mouse	WB, ELISA, IP	Hu, Ms, Rt	\$245

IGF-1R (pY1161)	500-12304	100 ug	Rabbit	IHC, ELISA	Hu, Ms, Rt	\$290
IκBa (pS32/36) (NFKB1A)	602--220	100 ug	Rabbit	ELISA, WB, IP	Hu, Ms, Rt	\$325
IKK-alpha(pS176)	601-090	100 ug	Mouse	WB, IP	Hu, Ms, Rt	\$235
IRAK4(pT345)	600-560	100 ug	Mouse	WB, ELISA	Hu	\$230
IRS-1 (pS312),	500-8984	100 ug	Rabbit	WB, IP	Hu/Rt/Ms	\$295
IRS1(pY612)	601-600	100 ug	Rabbit	Elisa, WB, IHC	Hu, Rt, Ms, Ck, canis,	\$345
IRS-2 (pS731)	500-9004	100 ug	Rabbit	WB, IP	Hu/Rt/Ms	\$290
IRS2(pS1001)	600-720	100 ug	Rabbit	WB, IP	Hu	\$290
JAK2(pY1007/Y1008)	620-150	100 ug	Rabbit	WB, IP	Hu	\$270
JAK2(pY1007/Y1008)(Biotinylated)	620-151	100 ug	Rabbit	WB, IP	Hu	\$330
JNK/SAPK1(pT183/pY185)	600-380	100 ug	Rabbit	WB, ELISA, IP	Hu, Rt	\$340
JunB (pS259)	500-11764	100 ug	Rabbit	IHC, WB, ELISA, IP	Hu, Ms	\$290
JunB (pS79)	500-11774	100 ug	Rabbit	IHC, ELISA, IP	Hu, Ms	\$290
JunD (pS255)	500-11784	100 ug	Rabbit	IHC, ELISA, IP	Hu, Ms	\$295
Keratin 18 (pS33)	500-7774	100 ug	Mouse	IP, IF	Hu,Ms	\$295
Keratin 8 (pS431)	500-5974	100 ug	Mouse	WB, IP, IHC-P, IF	Hu,Ms	\$290
L1CAM(pS1154)	601-070	100 ug	mouse	Wb, ELISA, IP	Hu, Ms, Rt	\$245
LRP5 (phospho)	601-010	100 ug	Rabbit	ELISA, WB	Hu/Rt/Ms	\$325
LRP6 (phospho)	601-060	100 ug	Rabbit	ELISA, WB	Hu/Rt/Ms	\$325
LSP (pS190)	602--250	100 ug	Rabbit	ELISA, WB, IP	Hu, Ms, Rt	\$299
MAPKK5 (MEK5) (pS311/pT315)	620-300	100 ug	Rabbit	Wb, ELISA, IP	Hu, Ms, Rt	\$375
MBP(pT98)	620-200	100 ug	Rabbit	Wb, ELISA, IP	Hu, Ms, Rt	\$290

MEK1/2(pS218/S222)	620-190	100 ug	Rabbit	Wb, ELISA, IP	Hu, Ms, Rt	\$290
Myc(pT358)	500-11824	100 ug	Rabbit	IHC, ELISA, IP	Hu, Ms	\$280
Myc(pT58)	500-11834	100 ug	Rabbit	IHC, WB, ELISA, IP	Hu, Ms	\$250
Neurofibromin(paired S2741)	620-250	100 ug	Rabbit	Wb, ELISA, IP	Hu	\$290
Neurofibromin(pS2741)	620-240	100 ug	Rabbit	Wb, ELISA, IP	Hu	\$290
Neuropilin-1 (Paired T916)	620-340	100 ug	Rabbit	Wb, ELISA, IP, IHC	Hu, Bv	\$325
Neuropilin-1 (pT916)	620-330	100 ug	Rabbit	Wb, ELISA, IP, IHC	Hu, Bv	\$375
NFκBp65 (pS276)	500-9064	100 ug	Rabbit	WB	Hu	\$285
NFκB-p100/p52(pS869)	500-11844	100 ug	Rabbit	IHC, WB, ELISA	Hu, Ms	\$270
NFκB-p65(pS468)	500-11854	100 ug	Rabbit	IHC, WB, ELISA	Hu, Ms	\$280
NFκB-p65(pT435)	500-11864	100 ug	Rabbit	IHC, WB, ELISA	Hu, Ms	\$270
NF-κB p100/p52(pS865)	500-11874	100 ug	Rabbit	IHC, WB, ELISA, IP	Hu, Ms	\$285
NF-κB p100/p52(pS865)	500-11874	100 ug	Rabbit	IHC, WB, ELISA, IP	Hu, Ms	\$285
NF-κB p105/p50(pS337)	500-11884	100 ug	Rabbit	IHC, WB, ELISA	Hu, Ms	\$285
NF-κB p105/p50(pS893)	500-11894	100 ug	Rabbit	IHC, ELISA	Hu, Ms	\$280
NF-κB p105/p50(pS907)	500-11904	100 ug	Rabbit	IHC, WB, ELISA, IP	Hu, Ms	\$290
NF-κB p65(pS276)	500-11914	100 ug	Rabbit	IHC, ELISA, WB, IP	Hu, Ms	\$290
NF-κB p65(pS536)	500-11924	100 ug	Rabbit	IHC, ELISA, IP	Hu, Ms	\$270
NF-κB p65(pT254)	500-11934	100 ug	Rabbit	IHC, WB, ELISA, IP	Hu, Ms	\$250
P53(pS15)	600-550	100 ug	Rabbit	WB, ELISA	Hu, Ms, Rt	\$220
P53(pS15)	601-220	100 ug	Mouse	WB, ELISA	Hu, Ms, Rt	\$245
P53(pS37)	601-260	100 ug	Rabbit	ELISA, IHC(P), WB	Hu/Rt/Ms	\$395

p56-LCK (LSK) (pY505)	602--340	100 ug	Rabbit	ELISA, WB, IP	Hu, Ms, Rt, Ck, Bv, Canis	\$325
PAK4(pS474)	600-030	100 ug	Rabbit	WB, IP, ELISA	Hu, Ms, Rt	\$365
Phosphoserine	500-020	100 ug	Mouse	WB, IP	Hu, Ms, Rt	\$330
Phosphoserine(Biotinylated)	500-021	100 ug	Mouse	WB, IP	Hu, Ms, Rt	\$350
PKC (pS345)	500-9244	100 ug	Rabbit	WB, IP	Hu, Ms, Rt	\$250
PR (phospho)	500-5344	100 ug	Mouse	IHC-P, IP	Hu	\$265
pTEN(pS380)	601-170	100 ug	Rabbit	WB, ELISA	Hu, Ms, Rt	\$245
Raf-1 (pS259)	500-12014	100 ug	Rabbit	IHC, ELISA	Hu, Ms	\$240
Rel (pS503)	500-12024	100 ug	Rabbit	IHC, ELISA	Hu, Ms	\$245
Retinoblastoma (pS608)	500-8244	100 ug	Mouse	WB	Hu,Ms	\$295
Rho Kinase/ROCKII (pT396)	500-9284	100 ug	Rabbit	WB	Hu, Ms, Rt, Ck, Bv, Canis	\$295
Rho Kinase/ROCKII (pT249)	602-870	100 ug	Rabbit	ELISA, WB, IP	Hu, Ms, Rt, Ck, Bv, Canis	\$295
Rho(pS188)	602-580	100 ug	Rabbit	ELISA, WB, IP, IHC	Hu, Rt, Ms, Ck, canis,	\$299
S6K(pS434)	601-030	100 ug	Rabbit	WB	Hu, Ms, Rt	\$215
S6K(pS434)	601-040	100 ug	Mouse	WB	Hu, Ms, Rt	\$195
SHC/P66 (pS36)	601-150	100 ug	Mouse	WB	Hu	\$215
SOX-9 (pS181)	620-270	100 ug	Rabbit	Wb, ELISA, IP	Hu, Ms, Rt	\$345
STAT1 (pY701)	620-160	100 ug	Rabbit	WB, IP	Hu, Ms, Rt	\$250
STAT3 (pS727)	500-12044	100 ug	Rabbit	IHC, WB, ELISA, IP	Hu, Ms	\$240
STAT3 (pY705)	500-12054	100 ug	Rabbit	IHC, ELISA, IP	Hu, Ms	\$255
STAT4(pY693)	500-12064	100 ug	Rabbit	IHC, ELISA, IP	Hu, Ms	\$255
STAT5 (pY694)	500-9334	100 ug	Rabbit	WB, IP	Hu, Ms, Rt	\$255

STAT5A (pS780)	500-12074	100 ug	Rabbit	IHC, WB, ELISA, IP	Hu, Ms	\$250
STAT5A (pY694)	500-12084	100 ug	Rabbit	IHC, WB, ELISA	Hu, Ms	\$225
STAT6 (pT645)	500-12094	100 ug	Rabbit	IHC, ELISA, IP	Hu, Ms	\$245
STAT6 (pY641)	500-12104	100 ug	Rabbit	IHC, ELISA	Hu, Ms	\$245
Tau (pS384)	600-060	100 ug	Mouse	WB, IP	Hu, Ms	\$219
VASA (phosphospecific)	601-340	100 ug	Rabbit	ELISA, WB, IHC	Hu	\$299
VEGFR-2 (CD309)	602--100	100 ug	Rabbit	ELISA, WB, IP	Hu, Ms, Rt	\$199
VEGFR-2 (pY951) (CD309)	602--080	100 ug	Rabbit	ELISA, WB, IP	Hu, Ms, Rt	\$299
VASA (phosphospecific)	601-340	100 ug	Rabbit	ELISA, WB, IHC	Hu	\$299



Primary Antibodies

Description	Catalogue	Volume	Host	Application	Cross Reactivity	Price
14.3.3 gamma	500-6964	100 ug	Mouse	WB, IP	Hu	\$199
14.3.3 sigma	500-4764	100 ug	Mouse	WB, IP, IHC-P, IF	Hu, Rt	\$199
14.3.3, Pan	500-6974	100 ug	Mouse	WB, IP	Hu	\$199
14-3-3 beta	500-2924	100 ug	Rabbit	IHC(P), WB, IP	Hu, Ms, Rt	\$189
14-3-3 zeta	500-12604	100 ug	Rabbit	IHC-P, WB	Hu, Ms, Rt	\$189
15-Lox-1	600-580	100 ug	Rabbit	WB, ELISA	Hu	\$219
15-Lox-2	600-590	100 ug	Rabbit	WB, ELISA	Hu	\$219
AATF	605-010	100 ug	Mouse	ELISA, WB, IHC	Hu	\$285
a-B-Crystallin	500-3764	100 ug	Rabbit	IHC(P), WB	Hu	\$199
Acetyl-Histone H3 (Lys9)	602-800	100 ug	Rabbit	ELISA, WB, IP	Hu, Ms, Rt	\$355
ACIN1	605-020	100 ug	Mouse	ELISA, WB, IHC	Hu	\$285
ACTB	605-030	100 ug	Mouse	ELISA, WB, IHC	Hu	\$285
Actin, Muscle Specific	500-4774	100 ug	Mouse	IHC-P, IF	Hu, Ms, Rt	\$219
Actin, Pan	500-4784	100 ug	Mouse	WB, IP, IHC-P	Hu, Ms, Rt	\$349
Actin, skeletal muscle	500-3884	100 ug	Rabbit	IHC(P)	Hu, Rt, Rb, Gp	\$199
Actin, Smooth Muscle	600-410	100 ug	Rabbit	IHC(P), WB	Hu, Ms, Rt	\$199
Actin, Smooth Muscle	500-6604	100 ug	Mouse	IHC-P, IF	Hu, Ms, Rt, Ck	\$249
Actin-beta	500-4554	100 ug	Rabbit	IHC(P)	Hu	\$339
Activin Receptor Type II	500-7004	100 ug	Mouse	WB, IP	Hu	\$379
ADAM10	605-040	100 ug	Mouse	ELISA, WB, IHC	Hu	\$285
ADAM10/KUZ	500-9424	100 ug	Rabbit	WB	Hu	\$319
Aggrecan	600-670	100 ug	Rabbit	WB, ELISA	Hu	\$215

AKT1/PKB α	600-200	100 ug	Rabbit	WB, IP	Hu, Ms, Rt	\$199
AKT2/PKB β	600-230	100 ug	Rabbit	WB, ELISA, IP	Hu, Ms, Rt	\$199
AKT3/PKB γ	600-240	100 ug	Rabbit	WB, ELISA, IP	Hu	\$199
ALK/p80	500-1094	100 ug	Rabbit	IHC(P)	Hu	\$299
Alkaline Phosphatase (AP)	500-7044	100 ug	Mouse	AP	Hu	\$239
Alpha Fetoprotein(AFP)	603-010	100 ug	Mouse	ELISA, WB, IHC, FC	Hu	\$269
Amylin Peptide	500-3404	100 ug	Rabbit	IHC(P)	Hu	\$249
Amyloid beta	500-3534	100 ug	Rabbit	IHC(P), WB, IP	Hu	\$299
Androgen Receptor (Paired S210)	602-690	100 ug	Rabbit	ELISA, WB, IP	Hu, Ms, Rt	\$299
Androgen Receptor (pS210)	602-680	100 ug	Rabbit	ELISA, WB, IP	Hu, Ms, Rt	\$355
Androgen Receptor (AR)	600-480	100 ug	Rabbit	WB, ELISA	Hu, Ms, Rt	\$199
Annexin I	601-830	100 ug	Rabbit	ELISA, IHC(P), WB	Hu	\$299
Annexin IV	500-13514	100 ug	Rabbit	WB	Hu, Ms, Rt	\$349
Annexin VI	500-12384	100 ug	Rabbit	IHC-P, WB	Hu, Ms, Rt	\$349
ANP (Atrial Natriuretic peptide)	601-700	100 ug	Rabbit	Elisa, WB, IHC	Hu	\$325
ARG1	600-490	100 ug	Rabbit	WB, ELISA	Hu	\$220
ASK1/MAPKKK5	600-260	100 ug	Rabbit	WB, ELISA, IP	Hu	\$195
ASXL1	605-050	100 ug	Mouse	ELISA, WB, IHC	Hu	\$285
ATF2	605-060	100 ug	Mouse	ELISA, WB, IHC	Hu	\$285
ATF2	500-11284	100 ug	Rabbit	IHC, WB, ELISA, IP	Hu, Ms	\$319
ATF3	605-070	100 ug	Mouse	ELISA, WB, IHC	Hu	\$285
BAFF/BLys/Thank/Tail-1	500-9494	100 ug	Rabbit	WB	Hu, Ms, Rt	\$319
BAG-1	500-5564	100 ug	Mouse	WB, IP, IHC-P	Hu	\$399
Bak	500-3324	100 ug	Rabbit	IHC(P)	Hu, Ms, Hm	\$299
BAT1	605-080	100 ug	Mouse	ELISA, WB, IHC	Hu	\$285

BAX	500-3384	100ug	Rabbit	ELISA, WB	Hu	\$299
BCAR3	600-100	100 ug	Rabbit	WB, IHC	Hu, Rt, Ms	\$265
BCAR3 (Non-phospho)	600-090	100 ug	Rabbit	WB, IHC	Hu, Rt, Ms	\$280
β -Catenin (Paired Y96)	602--030	100 ug	Rabbit	ELISA, WB, IP	Hu, Ms, Rt	\$215
β -Catenin (Paired 33/37)	602-590	100 ug	Rabbit	ELISA, WB, IP	Hu, Ms, Rt	\$299
β -Catenin (Paired Y228)	602--050	100 ug	Rabbit	ELISA, WB, IP	Hu, Ms, Rt	\$215
β -Catenin (Paired Y280)	602--070	100 ug	Rabbit	ELISA, WB, IP	Hu, Ms, Rt	\$215
β -Catenin (pS37)	602-600	100 ug	Rabbit	ELISA, WB, IP	Hu, Ms, Rt	\$299
BCL-10	500-7114	100 ug	Rabbit	WB	Hu, Ms, Rt	\$379
BCL-2	500-10544	100 ug	Rabbit	WB	Hu	\$349
Bcl-2a	500-1124	100 ug	Mouse	IHC(P), WB, IP, IF, FC	Hu	\$269
BCL6	605-090	100 ug	Mouse	ELISA, WB, IHC	Hu	\$285
BCL-6	601-840	100 ug	Rabbit	ELISA, IHC(P), WB	Hu	\$299
BCL9	605-100	100 ug	Mouse	ELISA, WB, IHC	Hu	\$285
BCL-W	602-950	100ug	Rabbit	ELISA, WB, IHC	Hu, Ms, Rt, Ck, Bv, Canis	\$295
Bcl-X	500-3374	100 ug	Rabbit	IHC(P)	Hu, Ms	\$299
bcl-X	500-6654	100 ug	Mouse	IHC-P, IP, IF, FC	Hu, Ms, Rt, Pg	\$369
Beta-Amyloid	600-730	100 ug	Rabbit	WB, ELISA	Hu	\$225
Beta-Amyloid (1-40)	600-740	100 ug	Rabbit	WB, ELISA	Hu	\$255
Beta-Amyloid (1-42)	600-750	100 ug	Rabbit	WB, ELISA	Hu	\$265
Bim	500-4364	100 ug	Rabbit	IHC(P), WB	Hu, Ms, Rt	\$299
Biotin	500-7124	100 ug	Mouse	WB, FC	N/A	\$199
Blk	500-10904	100 ug	Rabbit	WB	Hu	\$349
BNP	601-320	100 ug	Rabbit	ELISA, IHC(P), WB	Hu	\$325

Bovine Serum Albumin	500-7144	100 ug	Mouse	WB	Cw	\$399
Bromodeoxyuridine (BrdU)	500-4844	100 ug	Mouse	IHC-P, IF, FC	All species	\$269
BTC	600-140	100 ug	Rabbit	WB, ELISA,	Hu	\$220
BTF3	605-110	100 ug	Mouse	ELISA, WB, IHC	Hu	\$285
CA 125	500-3174	100 ug	Mouse	IHC(P)	Hu	\$219
Cadherin (pan)	500-2364	100 ug	Rabbit	IHC(P)	Hu	\$339
Cadherin-E	500-3464	100 ug	Rabbit	IHC(P)	Hu	\$299
CAK beta	500-10464	100 ug	Rabbit	WB	Hu	\$349
Calbindin D28	500-10344	100 ug	Rabbit	IHC-P, WB	Hu, Ms, Rt	\$349
Calcitonin	500-1154	100 ug	Rabbit	IHC(P)	Hu, Ms, Rt, Mk,Dg	\$349
Calmodulin	500-7164	100 ug	Mouse	WB	Hu, Rt, Cw, Ck	\$349
Calponin	500-4874	100 ug	Mouse	IHC-P	Hu	\$269
Calretinin	500-1174	100 ug	Rabbit	IHC(P)	Hu, Ms, Rt	\$299
Calumenin	600-640	100 ug	Rabbit	WB, ELISA	Hu, Ms, Rt	\$255
CaM Kinase IV	500-10604	100 ug	Rabbit	IHC-P, WB	Hu, Rt	\$349
Casein (kappa)	600-830	100 ug	Rabbit	WB, ELISA	Ms	\$220
Caspase 1	500-3914	100 ug	Rabbit	IHC(P), WB, IP	Hu, Ms, Rt	\$299
Caspase 10	500-10854	100 ug	Rabbit	IHC-P	Hu	\$349
Caspase 12	500-9544	100 ug	Rabbit	WB	Hu, Ms, Rt	\$319
Caspase 13	500-9554	100 ug	Rabbit	WB	Hu, Ms, Rt	\$319
Caspase 2	500-7174	100 ug	Rabbit	WB	Hu, Ms, Rt, Ck	\$379
Caspase 3	500-6574	100 ug	Mouse	WB, IP, IHC-P	Hu	\$399
Caspase 5	500-7184	100 ug	Rabbit	WB	Hu, Ms, Rt, Rb, Co ,Ha	\$379
Caspase 6	500-7194	100 ug	Rabbit	WB	Hu	\$379

Caspase 7	500-2274	100 ug	Rabbit	IHC(P), WB	Hu	\$399
Caspase 8	500-2284	100 ug	Rabbit	IHC(P), WB, IP	Hu	\$399
Caspase 9	500-2294	100 ug	Rabbit	IHC(P), WB, IP	Hu	\$399
Catenin alpha	500-3334	100 ug	Rabbit	IHC(P), WB	Hu, Ms	\$299
Catenin beta	500-2264	100 ug	Rabbit	IHC(P), WB, IP	Hu, Ms, Rt	\$339
Catenin gamma	500-3684	100 ug	Rabbit	IHC(P), WB, IP	Hu, Ms, Rt	\$299
Cathepsin D	500-2824	100 ug	Rabbit	IHC(P)	Hu	\$339
CBP	605-120	100 ug	Mouse	ELISA, WB, IHC	Hu	\$285
CCNB2	605-130	100 ug	Mouse	ELISA, WB, IHC	Hu	\$285
CCNE1	605-140	100 ug	Mouse	ELISA, WB, IHC	Hu	\$285
CCNF	605-150	100 ug	Mouse	ELISA, WB, IHC	Hu	\$285
CCNJ	605-160	100 ug	Mouse	ELISA, WB, IHC	Hu	\$285
CCR1	602--440	100 ug	Rabbit	ELISA, WB, IP	Hu	\$220
CCR10	500-13544	100 ug	Rabbit	WB	Hu	\$349
CCR5	500-9574	100 ug	Rabbit	WB	Hu	\$319
CCR8	500-9584	100 ug	Rabbit	WB	Hu	\$319
CD10	500-10454	100 ug	Rabbit	WB	Hu	\$349
CD10	500-1194	100 ug	Mouse	IHC(P)	Hu, Rt	\$399
CD105	500-4234	100 ug	Rabbit	IHC(P)	Hu	\$299
CD117 (kit)	600-970	100 ug	Rabbit	WB, ELISA IHC(P)	Hu, Ms	\$225
CD11b	500-10944	100 ug	Rabbit	WB	Hu	\$349
CD133	600-190	100 ug	Rabbit	WB, ELISA, IP	Hu, Ms, Rt	\$215
CD136 (RON)	601-940	100 ug	Rabbit	ELISA, WB, IP	Hu	\$215
CD136 (RON) (Nonphosphspecific)	601-930	100 ug	Rabbit	ELISA, WB, IP	Hu	\$299

CD138	500-4564	100 ug	Rabbit	IHC(P)	Hu	\$299
CD14	500-10554	100 ug	Rabbit	WB	Hu	\$349
CD146	500-11134	100 ug	Rabbit	IHC-P	Hu	\$349
CD147/EMMPRIN	500-10534	100 ug	Rabbit	WB	Hu	\$349
CD15	500-1204	100 ug	Mouse	IHC(P)	Hu	\$199
CD154	500-13554	100 ug	Rabbit	WB	Hu	\$349
CD156b	601-270	100 ug	Rabbit	IHC(P), WB	Hu, Ms, Rt	\$280
CD156b (IN)	600-870	100 ug	Rabbit	WB, ELISA	Hu, Ms	\$220
CD156b (NT)	600-880	100 ug	Rabbit	WB, ELISA	Hu, Ms	\$220
CD1a	500-1214	100 ug	Mouse	IHC(P)	Hu	\$399
CD1a	500-4714	100 ug	Rabbit	WB	Hu	\$299
CD2	500-3044	100 ug	Rabbit	IHC(P)	Hu	\$299
CD20	500-11214	100 ug	Mouse	IHC-P	Hu	\$349
CD20	500-2564	100 ug	Rabbit	ELISA, IHC(P), WB	Hu	\$299
CD20	500-2564	100 ug	Rabbit	IHC(P), WB, IP	Hu	\$269
CD23	500-3024	100 ug	Rabbit	IHC(P)	Hu	\$299
CD25	500-13564	100 ug	Rabbit	WB	Hu	\$349
CD253 (CT)	600-950	100 ug	Rabbit	WB, ELISA	Hu	\$225
CD253 (IN2)	600-940	100 ug	Rabbit	WB, ELISA	Hu	\$225
CD253 (TNFSF10)	600-930	100 ug	Rabbit	WB, ELISA	Hu	\$225
CD28	601-800	100 ug	Hamster	Elisa, IP, FC, IHC	Ms/Hu	\$299
CD28	601-810	100 ug	Mouse	ELISA, FC, IHC	Hu	\$299
CD29	500-13574	100 ug	Rabbit	WB	Hu	\$349
CD3	500-1254	100 ug	Rabbit	IHC(P), WB	Hu, Mk, Dg	\$329

CD3 zeta	500-3054	100 ug	Rabbit	IHC(P), WB, IP	Hu, Ms, Rt	\$299
CD3(T3)-Hu	603-030	100 ug	Mouse	ELISA, WB, IHC, FC	Hu	\$299
CD30	500-1264	100 ug	Mouse	IHC(P)	Hu	\$289
CD30	500-13484	100 ug	Rabbit	IHC-P, WB	Hu	\$349
CD31	500-11114	100 ug	Rabbit	IHC-P	Hu	\$299
CD31	500-1274	100 ug	Mouse	IHC(P), IF	Hu	\$269
CD34	500-1284	100 ug	Mouse	IHC(P)	Hu	\$329
CD34	500-4644	100 ug	Rabbit	WB	Hu	\$299
CD38	500-3254	100 ug	Rabbit	IHC(P)	Hu	\$269
CD4	500-10434	100 ug	Rabbit	WB	Hu	\$349
CD4	500-4704	100 ug	Rabbit	WB	Hu	\$299
CD4(T4)-hu	603-040	100 ug	Mouse	ELISA, WB, IHC	Hu	\$299
CD40	500-3704	100 ug	Rabbit	IHC(P), WB, IP	Hu, Ms, Rt	\$299
CD45/LCA	500-10564	100 ug	Rabbit	WB	Hu	\$349
CD45/LCA	500-12434	100 ug	Mouse	IHC-P	Hu	\$349
CD5	500-2474	100 ug	Rabbit	IHC(P)	Hu	\$369
CD54	500-10934	100 ug	Rabbit	WB	Hu	\$349
CD56	500-1374	100 ug	Mouse	IHC(P)	Hu	\$229
CD56	500-4474	100 ug	Rabbit	IHC(P)	Hu	\$339
CD57	500-1384	100 ug	Mouse	IHC(P)	Hu	\$239
CD68	500-1394	100 ug	Mouse	IHC(P)	Hu, Rt, Mk	\$269
CD7	500-4414	100 ug	Rabbit	WB	Hu	\$299
CD72	500-10924	100 ug	Rabbit	WB	Hu	\$349
CD79a	500-2494	100 ug	Rabbit	IHC(P), WB, IF	Hu, Ms, Rt	\$229

CD8	500-2484	100 ug	Rabbit	IHC(P)	Hu	\$419
CD8(T8)-Hu	605-060	100 ug	Mouse	ELISA, WB, IHC	Hu	\$289
CD9	500-11014	100 ug	Rabbit	IHC-P, WB	Hu	\$349
CD94	500-4624	100 ug	Mouse	ELISA, WB	Hu	\$299
CD95	500-2504	100 ug	Rabbit	IHC(P)	Hu	\$349
CD99	500-3394	100 ug	Rabbit	IHC(P)	Hu	\$279
CDC2	602--180	100 ug	Rabbit	ELISA, WB, IP	Hu, Ck, Bv	\$199
CDC2	605-170	100 ug	Mouse	ELISA, WB, IHC	Hu	\$285
CDC2 (Paired Y15) (CDK1)	602--170	100 ug	Rabbit	ELISA, WB, IP	Hu, Ck, Bv	\$220
CDC25A	500-5574	100 ug	Mouse	WB, IP, IHC-P, IF	Hu,Rt	\$250
CDC25b	601-630	100 ug	Rabbit	Elisa, WB, IHC	Hu	\$345
CDC25B	500-4884	100 ug	Mouse	IHC-P	Hu, Rt	\$290
CDC25b (Paired S42)	601-620	100 ug	Rabbit	Elisa, WB, IHC	Hu	\$295
CDC25C	605-180	100 ug	Mouse	ELISA, WB, IHC	Hu	\$285
CDC25C	500-7204	100 ug	Mouse	WB, IP, IF	Hu	\$250
CDC27	605-190	100 ug	Mouse	ELISA, WB, IHC	Hu	\$285
CDC34	500-7214	100 ug	Rabbit	WB	Hu	\$285
CDC37	500-7224	100 ug	Rabbit	WB	Hu,Ms	\$245
CDC45L	605-200	100 ug	Mouse	ELISA, WB, IHC	Hu	\$285
CDC47	500-7234	100 ug	Mouse	IHC-P, WB, IP, IF	Hu, Ms, Rt, Dg	\$255
CDC5L	605-210	100 ug	Mouse	ELISA, WB, IHC	Hu	\$285
CDC6	605-220	100 ug	Mouse	ELISA, WB, IHC	Hu	\$285
CDC6	500-7244	100 ug	Mouse	WB, IP	Hu	\$275
CDC7 Phosphatase	500-4894	100 ug	Mouse	WB, IP, IHC-P	Hu	\$260

Cdk2	500-5594	100 ug	Mouse	WB, IHC-P, IF	Hu, Ms, Rt	\$245
Cdk3	500-7264	100 ug	Rabbit	WB	Hu, Ms, Rt	\$235
Cdk4	500-7274	100 ug	Mouse	WB, IP, IF, KA	Hu, Ms, Rt, Pg	\$255
Cdk5	500-5604	100 ug	Mouse	WB, IP, IHC-P, IF	Hu, Ms, Rt	\$255
Cdk6	500-7284	100 ug	Mouse	WB, IP, IF	Hu, Ms, Rt	\$245
CDK7	605-230	100 ug	Mouse	ELISA, WB, IHC	Hu	\$285
Cdk7	500-7294	100 ug	Mouse	WB, IP, IF, FC	Hu,Rt	\$249
Cdk8	500-7304	100 ug	Rabbit	WB, IP, IF, KA	Hu, Ms, Rt	\$249
CDK9	605-240	100 ug	Mouse	ELISA, WB, IHC	Hu	\$285
Cdk-9	602--390	100 ug	Rabbit	ELISA, WB, IP	Hu	\$220
CDKN1B	605-250	100 ug	Mouse	ELISA, WB, IHC	Hu	\$285
CDKN2C	605-260	100 ug	Mouse	ELISA, WB, IHC	Hu	\$285
CEA	500-2974	100 ug	Rabbit	IHC(P), WB	Hu	\$129
CEA	603-070	100 ug	Mouse	ELISA, WB, IHC	Hu	\$249
c-erbB2	500-12424	100 ug	Mouse	IHC-P, WB	Hu, Ms, Rt	\$255
c-erbB-2	500-2444	100 ug	Rabbit	IHC(P), WB, IP	Hu, Ms, Rt	\$259
c-erbB-2/HER-2	500-4904	100 ug	Mouse	WB, IP, IHC-P	Hu, Ms, Rt, Mk	\$255
c-erbB3	500-3434	100 ug	Rabbit	IHC(P), IP	Hu	\$255
C-erbB3/HER3	602-540	100 ug	Rabbit	ELISA, WB, IP	Hu	\$199
c-erbB-3/HER-3	500-7314	100 ug	Mouse	IHC-P, FC	Hu	\$269
C-erbB3/HER3 (Paired Y1283)	602--530	100 ug	Rabbit	ELISA, WB, IP	Hu	\$290
c-erbB-4	500-2764	100 ug	Rabbit	IHC(P), WB, IP	Hu, Ms	\$259
c-erbB-4/HER-4	500-6664	100 ug	Mouse	IHC-P	Hu,Ms	\$299
c-fos	500-4464	100 ug	Rabbit	IHC(P)	Hu	\$280

CHES1	605-270	100 ug	Mouse	ELISA, WB, IHC	Hu	\$285
Chk1	500-7324	100 ug	Mouse	WB	Hu	\$299
Chk2	500-4914	100 ug	Mouse	WB, IHC-P	Hu	\$299
Chromogranin A	500-1524	100 ug	Rabbit	IHC(P)	Hu, Rt, Mk	\$199
Chromogranin A	500-6674	100 ug	Mouse	WB, IHC-P	Hu, Rb, Rt, Pg, Mk	\$219
CIS-1	500-9594	100 ug	Rabbit	WB	Hu	\$250
c-jun	500-4684	100 ug	Rabbit	WB	Hu	\$245
Claudin 1	500-3414	100 ug	Rabbit	IHC(P)	Hu, Ms, Rt	\$299
Claudin 10	500-10244	100 ug	Rabbit	IHC-P	Hu, Ms, Rt	\$299
Claudin 11	500-8774	100 ug	Rabbit	IHC(P)	Hu	\$299
Claudin 12	500-10724	100 ug	Rabbit	WB	Hu	\$289
Claudin 14	500-10484	100 ug	Rabbit	WB	Hu	\$299
Claudin 2	500-3924	100 ug	Rabbit	IHC(P)	Hu, Ms	\$299
Claudin 3	500-3834	100 ug	Rabbit	IHC(P), WB	Hu, Ms, Rt	\$299
Claudin 4	500-3984	100 ug	Rabbit	IHC(P), WB	Hu, Ms	\$299
Claudin 5	500-3754	100 ug	Rabbit	IHC(P), WB	Hu, Ms	\$299
Claudin 7	500-10594	100 ug	Rabbit	IHC-P	Hu, Ms, Rt	\$289
c-Met	500-10614	100 ug	Rabbit	IHC-P, WB	Hu	\$290
c-myb / v-myb	500-4934	100 ug	Mouse	WB, IHC-P	Hu	\$299
Coagulation Factor VIII (Cleaved form, C-Term)	601-970	100 ug	Rabbit	ELISA, WB, IP	Hu	\$299
Coagulation Factor VIII (Cleaved form, N-term)	601-960	100 ug	Rabbit	ELISA, WB, IP	Hu	\$299
Coagulation Factor VIII (Fused form)	601-950	100 ug	Rabbit	ELISA, WB, IP	Hu	\$325
Cocaine	603-160	100 ug	Mouse	ELISA, WB, IHC	Hu	\$289
Collagen I	500-13604	100 ug	Rabbit	WB	Hu	\$299

Collagen II	500-5634	100 ug	Mouse	WB, IHC-P, IF, FC	Hu, Ms, Rt, Ct	\$299
Collagen IV	500-1534	100 ug	Mouse	IHC(P)	Hu	\$280
Connexin 43	500-2744	100 ug	Rabbit	IHC(P), WB, IP	Hu, Ms, Rt	\$285
CREB	500-7354	100 ug	Rabbit	WB	Hu, Ms, Rt	\$269
CREB-Binding Protein	500-5644	100 ug	Mouse	IHC-P	Hu,Rt	\$299
CRP (IN)	600-980	100 ug	Rabbit	WB, ELISA	Hu	\$225
CRP (NT)	600-990	100 ug	Rabbit	WB, ELISA	Hu, Ms	\$199
CRP (NT)	601-300	100 ug	Rabbit	IHC(P), WB	Hu, Ms, Rt	\$245
CSF-1R	602--130	100 ug	Rabbit	ELISA, WB, IP	Hu, Ms, Rt	\$199
CSF-1R (Paired Y723)	602--120	100 ug	Rabbit	ELISA, WB, IP	Hu, Ms, Rt	\$220
c-Src	500-7364	100 ug	Rabbit	IP	Hu, Ms, Rt	\$299
CUL3	605-280	100 ug	Mouse	ELISA, WB, IHC	Hu	\$285
CXCR3	600-020	100 ug	Mouse	WB, ELISA	Hu, Ms, Rt	\$250
cyclic adenosine monophosphate (cAMP)	500-9534	100 ug	Mouse	WB	Hu, Ms, Rt	\$319
cyclic adenosine monophosphate (cAMP) (Biotinylated)	500-953B	100 ug	Mouse	WB	Hu, Ms, Rt	\$275
Cyclin A	500-7384	100 ug	Rabbit	IHC-P, WB, IP	Hu, Ms, Rt	\$299
Cyclin B1	500-4104	100 ug	Rabbit	IHC(P), WB, IP	Hu, Ms, Rt	\$299
Cyclin C	500-7394	100 ug	Rabbit	WB, IP, IF, KA	Hu, Ms, Rt, Dg	\$245
Cyclin D1	500-1544	100 ug	Rabbit	IHC(P), WB, IP, IF, KA	Hu, Ms, Rt	\$240
Cyclin D2	500-7404	100 ug	Mouse	WB, IP, IF, FC	Hu, Ms, Rt	\$230
Cyclin D3	500-5654	100 ug	Mouse	WB, IP, IHC-P, IF, FC	Hu, Ms, Rt, Mk	\$239
Cyclin E	500-3604	100 ug	Rabbit	IHC(P), WB, IP, IF, KA	Hu, Ms	\$269
Cyclin G1	500-10684	100 ug	Rabbit	WB	Hu	\$249

Cytochrome C	500-12414	100 ug	Rabbit	IHC-P	Hu	\$249
Cytochrome C	500-7414	100 ug	Mouse	IHC-P, WB	Hu, Ms, Rt, Dg	\$249
Cytokeratin-19 (CK-19)	602-670	100 ug	Rabbit	ELISA, WB, IP	Hu, Ms, Rt, Bv	\$299
DBF4	601-710	100 ug	Rabbit	Elisa, WB	Hu/Rt/Ms	\$299
DBF4	605-290	100 ug	Mouse	ELISA, WB, IHC	Hu	\$285
DBF4B	601-790	100 ug	Rabbit	ELISA., WB	Hu	\$299
DCC	601-460	100 ug	Rabbit	WB	Hu	\$325
Desmin	602--300	100 ug	Rabbit	ELISA, WB, IP	Hu, Ms, Rt	\$199
Desmin (Paired T76/77)	602--290	100 ug	Rabbit	ELISA, WB, IP	Hu, Ms, Rt	\$220
Dimethyl-Histone H3(Lys27)	602-790	100 ug	Rabbit	ELISA, WB, IP	Hu, Ms, Rt	\$355
Dimethyl-Histone H3(Lys4)	602-770	100 ug	Rabbit	ELISA, WB, IP	Hu, Ms, Rt	\$355
Dimethyl-Histone H3(Lys9)	602-780	100 ug	Rabbit	ELISA, WB, IP	Hu, Ms, Rt	\$355
DMTF1	605-300	100 ug	Mouse	ELISA, WB, IHC	Hu	\$285
dNK (Deoxynucleoside Kinase)	601-680	100 ug	Rabbit	WB, IHC	Drosph	\$355
E2F1	605-310	100 ug	Mouse	ELISA, WB, IHC	Hu	\$285
E2F-3	500-7524	100 ug	Mouse	IF	Hu, Rt	\$279
E2F-4	500-4994	100 ug	Mouse	WB, IHC-P, IF, GSA	Hu,Rt	\$295
E2F5	605-320	100 ug	Mouse	ELISA, WB, IHC	Hu	\$285
E2F-5	500-7534	100 ug	Rabbit	WB	Hu, Ms, Rt	\$295
E2F6	605-330	100 ug	Mouse	ELISA, WB, IHC	Hu	\$285
EEA1	605-340	100 ug	Mouse	ELISA, WB, IHC	Hu	\$285
EGFR	500-2454	100 ug	Rabbit	IHC(P), WB	Hu	\$289
EGFR	500-6694	100 ug	Mouse	WB, IP, IHC-P	Hu	\$299
EIF2S1	605-350	100 ug	Mouse	ELISA, WB, IHC	Hu	\$285

Endostatin	500-5004	100 ug	Rabbit	WB, IHC-P	Hu	\$269
eNOS	500-4114	100 ug	Rabbit	IHC(P), WB	Hu, Ms, Rt	\$299
Eotaxin	500-9714	100 ug	Rabbit	WB	Hu	\$299
Ephrin A4	500-11154	100 ug	Rabbit	IHC-P	Hu	\$299
Ephrin B1	500-13624	100 ug	Rabbit	WB	Hu	\$279
Ephrin B3	500-11224	100 ug	Rabbit	IHC-P	Hu	\$245
Ephrin B3	500-13634	100 ug	Rabbit	WB	Hu	\$245
ER (Paired S167)	601-890	100 ug	Rabbit	ELISA, IHC(P), WB	Hu, Ms, Rt	\$279
ER81	602-930	100 ug	Rabbit	ELISA, WB, IHC	Ms, Hu, Rt	\$255
ERAB	500-10324	100 ug	Rabbit	IHC-P, WB	Hu	\$225
ERCC1	605-360	100 ug	Mouse	ELISA, WB, IHC	Hu	\$285
ERCC1	500-5674	100 ug	Mouse	WB, IP, IHC-P	Hu,Rt	\$299
ERCC6	605-370	100 ug	Mouse	ELISA, WB, IHC	Hu	\$285
ERCC8	605-380	100 ug	Mouse	ELISA, WB, IHC	Hu	\$285
ERK1	500-3564	100 ug	Rabbit	IHC(P), WB, IP	Hu, Ms, Rt	\$299
ERK1/2 (P44-MAPK)	602--330	100 ug	Rabbit	ELISA, WB, IP	Hu, Ms, Rt, Ck, Canis	\$199
ERK1/2 (P44-MAPK) (PairedT202/Y204)	602--320	100 ug	Rabbit	ELISA, WB, IP	Hu, Ms, Rt, Ck, Canis	\$220
ERK2	500-3974	100 ug	Rabbit	IHC(P), WB, IP	Hu, Ms, Rt	\$299
Estrogen Receptor	500-1644	100 ug	Rabbit	IHC(P), WB	Hu, Ms, Rt	\$299
Estrogen Receptor beta	500-4744	100 ug	Rabbit	WB	Hu	\$299
EWS-b	600-820	100 ug	Rabbit	WB, ELISA	Hu, Ms, Rt	\$225
FAH (Fumarylacetoacetat Hydrolase)	602-910	100 ug	Rabbit	ELISA, WB, IHC	Ms, Hu, Rt	\$289
FBL	605-390	100 ug	Mouse	ELISA, WB, IHC	Hu	\$285
FGF 4 (NT)	600-890	100 ug	Rabbit	WB, ELISA	Hu, Ms, Rt	\$230

FGF4 (IN)	600-900	100 ug	Rabbit	WB, ELISA	Hu, Ms, Rt	\$230
FGF4 (NT1)	600-910	100 ug	Rabbit	WB, ELISA	Hu, Ms, Rt	\$230
FGF4 (NT2)	600-920	100 ug	Rabbit	WB, ELISA	Hu, Ms, Rt	\$230
FGFR-1	500-10584	100 ug	Rabbit	IHC-P	Hu	\$285
FGFR-2	500-10574	100 ug	Rabbit	IHC-P	Hu	\$285
FGFR-3	500-10234	100 ug	Rabbit	IHC-P, WB	Hu	\$245
Fibrinogen (gamma)	600-800	100 ug	Rabbit	WB, ELISA	Hu, Ms	\$215
Fibulin-2	600-630	100 ug	Rabbit	WB, ELISA	Hu, Ms	\$235
FITC	500-7564	100 ug	Mouse	IHC, FC	N/A	\$199
FLK-1	601-860	100 ug	Rabbit	ELISA, IHC(P), WB	Hu	\$299
FLT1 Peptide	602--450	100 ug	Rabbit	ELISA, WB, IP	Hu	\$220
FOS	605-400	100 ug	Mouse	ELISA, WB, IHC	Hu	\$285
FOXA-1	601-570	100 ug	Rabbit	WB	Hu	\$325
FOXA-2	601-580	100 ug	Rabbit	WB	Hu	\$325
FOXA3	602-700	100 ug	Rabbit	ELISA, WB, IP	Hu, Ms, Rt	\$245
FOXL2	605-410	100 ug	Mouse	ELISA, WB, IHC	Hu	\$285
FOXM1	605-420	100 ug	Mouse	ELISA, WB, IHC	Hu	\$285
FOXP1	602--460	100 ug	Rabbit	ELISA, WB, IP	Hu	\$220
FOXP2	602--470	100 ug	Rabbit	ELISA, WB, IP	Hu	\$220
FOXP3	602--480	100 ug	Rabbit	ELISA, WB, IP	Hu	\$220
FOXP4	602--490	100 ug	Rabbit	ELISA, WB, IP	Hu	\$220
FSH b-subunit	603-170	100 ug	Mouse	ELISA, WB, IHC	Hu	\$ 289
FSH b-subunit	603-180	100 ug	Mouse	ELISA, WB, IHC	Hu	\$ 289
GABA a Receptor 1	500-2884	100 ug	Rabbit	IHC(P), WB, IP	Hu, Ms, Rt	\$299
GADD153	602--430	100 ug	Rabbit	ELISA, WB, IP	Hu	\$220

GAPDH	602-010	100 ug	Mouse	ELISA, WB, IP	Hu, Ms, Rt	\$299
GATA-6	601-560	100 ug	Rabbit	WB	Hu	\$345
GATAD1	605-430	100 ug	Mouse	ELISA, WB, IHC	Hu	\$285
Glucagon	500-6944	100 ug	Rabbit	IHC-P	Hu, Ms, Rt	\$210
Glucose-Regulated Protein 94	500-5734	100 ug	Rat	WB, IP, IHC-P	Hu, Ms, Rt, Mk, Pg, Dg	\$299
GluR 2/3	500-3004	100 ug	Rabbit	IHC(P), WB, IP	Hu, Ms, Rt	\$289
GluR1	500-3064	100 ug	Rabbit	IHC(P), WB	Hu, Ms, Rt	\$299
GluR4	500-2904	100 ug	Rabbit	IHC(P), WB, IP	Hu, Ms, Rt	\$289
GluR6/7	500-2934	100 ug	Rabbit	IHC(P), WB, IP	Hu, Ms, Rt	\$285
GLUT-1	500-2844	100 ug	Rabbit	IHC(P), WB, IF	Hu, Rt	\$279
GLUT-3	500-3274	100 ug	Rabbit	IHC(P), WB, ELISA	Hu	\$289
Glycogen Synthase Kinase 3b (GSK3b)	500-7614	100 ug	Rabbit	WB	Hu, Ms, Rt, Bv	\$279
GPCR119	600-710	100 ug	Rabbit	WB, ELISA	Ms	\$225
GSK-3alpha	500-2914	100 ug	Rabbit	IHC(P), WB	Hu, Ms, Rt	\$349
GSK-3b	602--210	100 ug	Rabbit	ELISA, WB, IP	Hu, Ms, Rt	\$199
GSK-3b (Paired Y216)	602--200	100 ug	Rabbit	ELISA, WB, IP	Hu, Ms, Rt	\$199
GSK3b(Paired S9)	600-050	100 ug	Rabbit	WB, IP, ELISA	Hu, Ms, Rt	\$215
GST	500-4434	100 ug	Rabbit	WB	Hu	\$299
GST	500-7634	100 ug	Mouse	WB, AP	Hu	\$349
GTF2B	605-440	100 ug	Mouse	ELISA, WB, IHC	Hu	\$285
H1N1(CT) (Influenza A virus)	601-240	100 ug	Rabbit	WB, ELISA	Virus	\$225
H2N2 (Influenza A virus)	601-250	100 ug	Rabbit	WB, ELISA	Virus	\$225
H5N1(NT) (Influenza A virus)	601-230	100 ug	Rabbit	WB, ELISA	Virus	\$225
HA (Hemagglutinin)	500-7644	100 ug	Rabbit	WB, IP	Virus	\$220

HBcAg	603-230	100 ug	Mouse	ELISA, WB, IHC	Hu	\$289
HBcAg	603-250	100 ug	Mouse	ELISA, WB, IHC	Hu	\$289
HBcAg	500-3194	100 ug	Mouse	IHC(P)	Hu	\$169
HBeAg	603-270	100 ug	Mouse	ELISA, WB, IHC	Hu	\$289
HBeAg	603-280	100 ug	Mouse	ELISA, WB, IHC	Hu	\$289
HBsAg	603-300	100 ug	Mouse	ELISA, WB, IHC	Hu	\$289
HBsAg	603-290	100 ug	Mouse	ELISA, WB, IHC	Hu	\$289
HCFC2	605-450	100 ug	Mouse	ELISA, WB, IHC	Hu	\$285
hCG a-subunit	603-310	100 ug	Mouse	ELISA, WB, IHC	Hu	\$289
hCG beta	500-3114	100 ug	Mouse	IHC(P)	Hu	\$169
hCG b-subunit	603-350	100 ug	Mouse	ELISA, WB, IHC	Hu	\$289
HCV envelope antigen	603-380	100 ug	Mouse	ELISA, WB, IHC	Hu	\$289
HD	605-460	100 ug	Mouse	ELISA, WB, IHC	Hu	\$285
HDAC1	605-470	100 ug	Mouse	ELISA, WB, IHC	Hu	\$285
Heat Shock Factor 1	500-7654	100 ug	Rat	WB, IP, IF, GSA	Hu, Ms, Rt	\$255
Heat Shock Factor 2	500-7664	100 ug	Rat	WB, IP, IF, GSA	Hu,Ms,Mo	\$265
Hepatitis B virus core Ag	500-1704	100 ug	Rabbit	IHC(P)	Hu	\$149
Hepatitis B virus surface Ag	500-1714	100 ug	Mouse	IHC(P)	Hu	\$199
hGH	500-3124	100 ug	Mouse	IHC(P)	Hu	\$239
HIF, alpha	602--510	100 ug	Rabbit	ELISA, WB, IP	Hu	\$290
HIP2	605-480	100 ug	Mouse	ELISA, WB, IHC	Hu	\$285
Histone H3	620-360	100 ug	Rabbit	Wb, ELISA, IP, IHC	Hu, Ms, Rt, Ck, Bv	\$199
Histone H3 (pSer10)	602-810	100 ug	Rabbit	ELISA, WB, IP	Hu, Ms, Rt	\$355
HIV FLKEKGGL	603-390	100 ug	Mouse	ELISA, WB, IHC	Hu	\$289

HIV LHPEYYK	603-400	100 ug	Mouse	ELISA, WB, IHC	Hu	\$289
HIV p24	603-410	100 ug	Mouse	ELISA, WB, IHC	Hu	\$289
HIV p24	603-420	100 ug	Mouse	ELISA, WB, IHC	Hu	\$289
HIV, gp160,120	603-220	100 ug	Mouse	ELISA, WB, IHC	Hu	\$289
HIV, nef. FPVPTPQ	603-610	100 ug	Mouse	ELISA, WB, IHC	Hu	\$289
HIV, p18	603-430	100 ug	Mouse	ELISA, WB, IHC	Hu	\$289
HIV, p55+18	603-440	100 ug	Mouse	ELISA, WB, IHC	Hu	\$289
HIVgp160, gp120, gp41	603-450	100 ug	Mouse	ELISA, WB, IHC	Hu	\$289
HIVgp160, gp120, gp41	603-460	100 ug	Mouse	ELISA, WB, IHC	Hu	\$289
HOXA11	605-490	100 ug	Mouse	ELISA, WB, IHC	Hu	\$285
HOXA5	605-500	100 ug	Mouse	ELISA, WB, IHC	Hu	\$285
HOXA7	605-510	100 ug	Mouse	ELISA, WB, IHC	Hu	\$285
HOXA9	605-520	100 ug	Mouse	ELISA, WB, IHC	Hu	\$285
HOXB5	605-530	100 ug	Mouse	ELISA, WB, IHC	Hu	\$285
HOXB7	605-540	100 ug	Mouse	ELISA, WB, IHC	Hu	\$285
HOXC11	605-550	100 ug	Mouse	ELISA, WB, IHC	Hu	\$285
HOXC9	605-560	100 ug	Mouse	ELISA, WB, IHC	Hu	\$285
HPV 16	500-5834	100 ug	Mouse	IHC-P, IF	Type 16 vir	\$289
HPV 16-E7 HRP	500-7694	100 ug	Mouse	IF, FC	HPV-16	\$299
	500-8634	100 ug	Rabbit	ELISA	all species	\$199
HSP27	500-5764	100 ug	Mouse	WB, IHC-P	Hu, Ck, Ms, Cn	\$290
HSP60	500-5774	100 ug	Mouse	WB, IP, IHC-P, IF	Hu, Ms, Rt, Bv	\$295
HSP70	500-5784	100 ug	Mouse	WB, IP, IHC-P, IF. FC	Hu,Mo,Co	\$295
HSP75	500-7674	100 ug	Mouse	WB	Hu	\$290

HSP84	500-5804	100 ug	Rabbit	WB, IP, IHC-P, IF	Hu, Ms, Rt	\$285
HSP86	500-5794	100 ug	Rabbit	WB, IP, IHC-P, IF	Hu, Ms, Rt	\$269
HSPA1L	605-570	100 ug	Mouse	ELISA, WB, IHC	Hu	\$285
HSV	500-9804	100 ug	Rabbit	WB, IP	HSV infected	\$279
Human IgG Fc	603-510	100 ug	Mouse	ELISA, WB, IHC	Hu	\$289
Human IgG Fc	603-520	100 ug	Mouse	ELISA, WB, IHC	Hu	\$289
Human IgMu-chain	603-530	100 ug	Mouse	ELISA, WB, IHC	Hu	\$289
HYOU1	600-620	100 ug	Rabbit	WB, ELISA	Hu, Ms, Rt	\$240
ID1	605-580	100 ug	Mouse	ELISA, WB, IHC	Hu	\$285
ID2	605-590	100 ug	Mouse	ELISA, WB, IHC	Hu	\$285
Id3	602--380	100 ug	Rabbit	ELISA, WB, IP	Hu	\$220
IFN gamma	500-4584	100 ug	Mouse	ELISA	Hu	\$299
IgA	500-1744	100 ug	Rabbit	IHC(P)	Hu	\$119
IgA	500-5094	100 ug	Mouse	IHC-P	Hu	\$199
IGF-1R	500-2534	100 ug	Mouse	IHC(P)	Hu	\$299
IGF-I	500-3724	100 ug	Rabbit	IHC(P)	Hu, Ms, Rt	\$299
IGF-I	500-7704	100 ug	Mouse	WB	Hu, Ms, Rt	\$299
IgG	500-1754	100 ug	Rabbit	IHC(P)	Hu	\$119
IGHA1	601-730	100 ug	Rabbit	ELISA., WB	Hu	\$299
IGHA2	601-740	100 ug	Rabbit	ELISA., WB	Hu	\$299
IgM	500-1764	100 ug	Rabbit	IHC(P)	Hu	\$119
IgM (m-Heavy Chain)	500-5104	100 ug	Mouse	IHC-P	Hu	\$219
I-Kappa-B Kinase b (IKKb)	500-7714	100 ug	Rabbit	WB, IP	Hu, Ms, Rt	\$379
IkbBa (NFKB1A)	602--240	100 ug	Rabbit	ELISA, WB, IP	Hu, Ms, Rt	\$199

IκBa (Paired S32/36) (NFκB1A)	602--230	100 ug	Rabbit	ELISA, WB, IP	Hu, Ms, Rt	\$220
IKK-alpha	601-100	100 ug	Rabbit	WB, ELISA, IHC	Hu	\$255
IL-10	500-8554	100 ug	Rat	ELISA	Hu	\$299
IL-10R	500-8574	100 ug	Rat	ELISA	Hu	\$299
IL-13	500-4604	100 ug	Mouse	ELISA	Hu	\$299
IL17	500-4544	100 ug	Mouse	ELISA	Hu	\$339
IL-2	500-8504	100 ug	Rat	ELISA	Hu	\$299
IL-23	500-8584	100 ug	Rat	ELISA	Hu	\$299
IL-3	500-8514	100 ug	Rat	ELISA	Hu	\$299
IL-30	500-8564	100 ug	Rat	ELISA	Hu	\$299
IL-4	500-8524	100 ug	Rat	ELISA	Hu	\$299
IL-5	500-8534	100 ug	Rat	ELISA	Hu	\$299
IL-6	500-8544	100 ug	Rat	ELISA	Hu	\$299
iNOS	500-3744	100 ug	Rabbit	IHC(P), WB	Hu, Ms, Rt	\$299
Insulin	500-1774	100 ug	Mouse	IHC(P)	Hu, Rt, Pg	\$199
Insulin Receptor	500-5844	100 ug	Mouse	IHC-P, FC, KA	Hu,Co,Pi,Rb	\$399
IRAK	500-7744	100 ug	Rabbit	WB	Hu, Ms, Rt	\$379
IRAK-2	500-9834	100 ug	Rabbit	WB	Hu	\$319
IRAK-M	500-9844	100 ug	Rabbit	WB	Hu, Ms, Rt	\$319
IRF3	605-600	100 ug	Mouse	ELISA, WB, IHC	Hu	\$285
IRS-1	500-12594	100 ug	Rabbit	IHC-P	Hu	\$349
IRS-1(Paired S312)	602-620	100 ug	Rabbit	ELISA, WB, IP	Hu, Ms, Rt	\$245
IRS-2	602-640	100 ug	Rabbit	ELISA, WB, IP	Hu, Ms, Rt	\$225
IRS-2 (Paired S731)	602-630	100 ug	Rabbit	ELISA, WB, IP	Hu, Ms, Rt	\$245

JAK1	600-350	100 ug	Rabbit	WB, ELISA, IP	Hu, Ms, Rt	\$189
JAK2	600-360	100 ug	Rabbit	WB, ELISA, IP	Hu, Ms, Rt	\$189
JAK2 (Paired Y1007/1008)	601-670	100 ug	Rabbit	WB, ELISA,	Hu	\$289
JAK3	600-370	100 ug	Rabbit	WB, ELISA, IP	Hu, Ms, Rt	\$189
JAK-3	500-5114	100 ug	Mouse	WB, IP, IHC-P	Hu,Ms	\$369
JM4	602--410	100 ug	Rabbit	ELISA, WB, IP	Hu	\$220
JNK Activating kinase (JNK1)	500-7764	100 ug	Rabbit	WB	Hu, Ms, Rt	\$379
JUNB	605-610	100 ug	Mouse	ELISA, WB, IHC	Hu	\$285
Kallikrein 3/PSA	600-860	100 ug	Rabbit	WB, ELISA	Hu	\$295
Kallikrein3	600-960	100 ug	Rabbit	WB, ELISA	Hu	\$285
Kappa Light Chain (B-Cell Marker)	500-1784	100 ug	Rabbit	IHC(P)	Hu	\$199
Keratin 10	500-5874	100 ug	Mouse	IHC-P, IF	Hu, Rt, Pg	\$229
Keratin 10/13	500-5884	100 ug	Mouse	IHC-P, IF	Hu, Rt, Ct	\$199
Keratin 14	500-2624	100 ug	Rabbit	IHC(P), WB	Hu	\$209
Keratin 14	500-5894	100 ug	Mouse	WB, IHC-P	Hu	\$229
Keratin 15	500-5124	100 ug	Mouse	IHC-P, IF	Hu, Ms, Rt, Cw	\$229
Keratin 16	500-5904	100 ug	Mouse	IHC-P, IF	Hu	\$199
Keratin 18	500-5914	100 ug	Mouse	WB, IHC-P, IF	Hu	\$169
Keratin 20	500-13674	100 ug	Rabbit	WB	Hu	\$349
Keratin 20	500-1844	100 ug	Mouse	IHC(P), WB	Hu, Ms	\$339
Keratin 5/6/18	500-5934	100 ug	Mouse	IHC-P	Hu, Rt, Cw	\$199
Keratin 5/8	500-5944	100 ug	Mouse	IHC-P, IF	Hu	\$199
Keratin 6	500-5954	100 ug	Mouse	IHC-P	Hu,Ms	\$199
Keratin 7	500-12354	100 ug	Rabbit	IHC-P	Hu	\$299

Keratin 7	500-5964	100 ug	Mouse	IHC-P	Hu	\$289
Keratin 8	500-3264	100 ug	Rabbit	IHC(P)	Hu	\$199
Keratin 8	500-5144	100 ug	Mouse	IHC-P, IP	Hu	\$239
Keratin 8/18	500-1864	100 ug	Mouse	IHC(P)	Hu	\$229
Keratin, HMW	500-3224	100 ug	Mouse	IHC(P), IF	Hu, Ms, Rt	\$169
Keratin, LMW	500-3214	100 ug	Mouse	IHC(P), IF	Hu, Ms, Rt	\$169
Ki-67	500-1874	100 ug	Rabbit	IHC(P), WB	Hu, Rt	\$299
Kit (IN)	601-290	100 ug	Rabbit	IHC(P), WB	Hu, Ms, Rt	\$280
Kit (NT)	601-280	100 ug	Rabbit	IHC(P), WB	Hu, Ms, Rt	\$280
Lambda Light chain	500-1884	100 ug	Rabbit	IHC(P)	Hu	\$199
Lamin B	500-13494	100 ug	Rabbit	IHC-P, WB	Hu	\$289
Laminin B1/b1	500-6024	100 ug	Rat	WB, IP, IHC-P, IF	Hu,Ms,Pi,Ha	\$289
Laminin B2 /g1	500-5154	100 ug	Mouse	IHC-P	Hu, Rt, Gp	\$349
Laminin B2/g1	500-6034	100 ug	Rat	WB, IP, IHC-P, IF	Hu,Ms	\$349
Laminin Receptor	500-6044	100 ug	Mouse	IHC-P, IF, FC	Hu	\$299
Laminin-s	500-7794	100 ug	Mouse	WB, IP	Hu, Rt, Bv, Ck	\$299
Legumain	600-650	100 ug	Rabbit	WB, ELISA	Hu, Ms, Rt	\$245
LH	500-3094	100 ug	Mouse	IHC(P)	Hu	\$169
LH b-subunit	603-540	100 ug	Mouse	ELISA, WB, IHC	Hu	\$289
L-Plastin	600-760	100 ug	Rabbit	WB, ELISA	Hu, Ms, Rt	\$255
LRP5 (Non-phospho)	601-020	100 ug	Rabbit	ELISA, WB	Hu/Rt/Ms	\$299
LRP6 (Non-phospho)	601-130	100 ug	Rabbit	ELISA, WB	Hu/Rt/Ms	\$299
LRRK2	602-570	100 ug	Rabbit	ELISA, WB, IP, IHC	HU	\$315
LSP	602--270	100 ug	Rabbit	ELISA, WB, IP	Hu, Ms, Rt	\$199

LSP (Paired S190)	602--260	100 ug	Rabbit	ELISA, WB, IP	Hu, Ms, Rt	\$220
Luciferase	500-7824	100 ug	Mouse	WB	All species	\$269
Lysozyme	601-780	100 ug	Rabbit	ELISA., WB	Hu	\$299
Macrophage	500-6074	100 ug	Mouse	IHC-P	Hu, Ms, Rt, Pg	\$229
MAD1	605-620	100 ug	Mouse	ELISA, WB, IHC	Hu	\$285
Maltose Binding Protein	500-7844	100 ug	Mouse	WB, IF	All species	\$299
Mammaglobin	602--500	100 ug	Rabbit	ELISA, WB, IP	Hu	\$220
MAPKK5 (MEK5)	620-320	100 ug	Rabbit	Wb, ELISA, IP	Hu, Ms, Rt	\$315
MAPKK5 (MEK5) (Paired S311/T315)	620-310	100 ug	Rabbit	Wb, ELISA, IP	Hu, Ms, Rt	\$315
MAX	605-630	100 ug	Mouse	ELISA, WB, IHC	Hu	\$285
MBP	601-870	100 ug	Rabbit	ELISA, IHC(P), WB	Hu, Ms, Rt	\$245
MBP (Paired T98)	601-880	100 ug	Rabbit	ELISA, IHC(P), WB	Hu, Ms, Rt	\$279
MCM5	602--400	100 ug	Rabbit	ELISA, WB, IP	Hu	\$220
Mek1	500-7854	100 ug	Rabbit	WB	Hu, Ms, Rt	\$289
MEK1/2 (paired S218/S222)	620-180	100 ug	Rabbit	Wb, ELISA, IP	Hu, Ms, Rt	\$275
Mek2	500-7864	100 ug	Rabbit	WB	Hu, Ms, Rt	\$289
Mek6	500-7874	100 ug	Rabbit	WB, IP	Hu, Ms, Rt	\$279
Mekk-1	500-7884	100 ug	Rabbit	WB	Hu, Ms, Rt	\$289
Melanoma	602-940	100 ug	Mouse	ELISA, WB, IHC	Hu	\$295
Meteorin(CT)	600-450	100 ug	Rabbit	IHC, WB, ELISA	Hu, Ms, Rt	\$220
Meteorin(IN)	600-440	100 ug	Rabbit	IHC, WB, ELISA	Hu, Ms, Rt	\$220
Meteorin(NT)	600-430	100 ug	Rabbit	IHC, WB, ELISA	Hu, Ms, Rt	\$220
mGluR1	500-2894	100 ug	Rabbit	IHC(P), WB, IP	Hu, Ms, Rt	\$289
mGluR5	500-2874	100 ug	Rabbit	IHC(P), WB, IP	Hu, Rt, Rb	\$289

MHC I (HLA-A,B,C)	500-7914	100 ug	Mouse	FC	Hu	\$239
MHC II (HLA-DP and DR)	500-6144	100 ug	Mouse	IHC-P, FC	Hu	\$239
Midkine	600-110	100 ug	Rabbit	WB, ELISA, IP	Hu	\$210
Midkine (Biotinylated)	600-111	100 ug	Rabbit	WB, ELISA, IP	Hu	\$270
MIG-7	602-920	100 ug	Rabbit	ELISA, WB, IHC	Hu	\$255
Mitochondria	500-5204	100 ug	Mouse	WB, IHC-P, IF	Hu	\$359
MKK3	500-12974	100 ug	Rabbit	IHC-P, WB, ELISA	Hu, Rt	\$319
MKK6	500-13064	100 ug	Rabbit	IHC-P, WB, ELISA	Hu, Rt	\$299
MMP-1 (Collagenase-I)	500-7964	100 ug	Rabbit	WB	Hu	\$299
MMP-10	500-3674	100 ug	Rabbit	IHC(P), WB	Hu	\$260
MMP-10 (Stromilysin-2)	500-6734	100 ug	Mouse	WB, IP, IHC-P	Hu	\$255
MMP-11 (Stromelysin-3)	500-5214	100 ug	Mouse	WB, IP, IHC-P	Hu	\$280
MMP-12	601-400	100 ug	Rabbit	WB, ELISA	Hu	\$295
MMP-13	602-840	100 ug	Rabbit	ELISA, WB, IP	Hu	\$295
MMP-13 (Collagenase-3)	500-6184	100 ug	Mouse	IHC-P, IP	Hu, Ms, Rt	\$280
MMP-14	500-3864	100 ug	Rabbit	IHC(P), WB	Hu	\$299
MMP-15	500-4124	100 ug	Rabbit	IHC(P), WB	Hu, Ms	\$299
MMP-16 / MT3-MMP	500-5224	100 ug	Rabbit	IHC-P	Hu, Ms, Rt	\$280
MMP-17	601-410	100 ug	Rabbit	WB	Hu, Ms, Rt	\$295
MMP-19	500-4034	100 ug	Rabbit	IHC(P), WB	Hu	\$299
MMP-2	500-3654	100 ug	Rabbit	IHC(P), WB	Hu	\$299
MMP-2 (72kDa Collagenase IV)	500-6744	100 ug	Mouse	WB, IHC-P	Hu, Ms, Rt	\$299
MMP-20	601-420	100 ug	Rabbit	WB	Hu	\$299
MMP-21	601-430	100 ug	Rabbit	WB	Hu	\$299

MMP-23	500-4044	100 ug	Rabbit	IHC(P), WB	Hu	\$299
MMP-24/MT5-MMP	601-370	100 ug	Rabbit	WB	Hu	\$299
MMP-26	601-380	100 ug	Rabbit	WB	Hu	\$299
MMP-27	601-390	100 ug	Rabbit	WB	Hu	\$299
MMP-28	600-690	100 ug	Rabbit	WB	Hu	\$299
MMP-3	500-12674	100 ug	Rabbit	IHC-P	Hu	\$289
MMP-3 (Stromelysin-1)	500-6194	100 ug	Mouse	WB, IHC-P, IF	Hu	\$299
MMP-7 (Matrilysin)	500-6204	100 ug	Mouse	IHC-P, IF, AP	Hu	\$290
MMP-7 (Matrilysin)	602-830	100 ug	Rabbit	ELISA, WB, IP	Hu	\$295
MMP-8	500-9884	100 ug	Rabbit	WB	Hu	\$289
MMP-9	500-3664	100 ug	Rabbit	IHC(P), WB	Hu, Gp	\$289
MMP-9 (92kDa Collagenase IV)	500-7974	100 ug	Mouse	WB, IP	Hu,Rt	\$269
Monomethyl-Histone H3(Lys27)	602-760	100 ug	Rabbit	ELISA, WB, IP	Hu, Ms, Rt	\$355
Monomethyl-Histone H3(Lys4)	602-740	100 ug	Rabbit	ELISA, WB, IP	Hu, Ms, Rt	\$355
Monomethyl-Histone H3(Lys9)	602-750	100 ug	Rabbit	ELISA, WB, IP	Hu, Ms, Rt	\$355
Morphine	603-580	100 ug	Mouse	ELISA, WB, IHC	Hu	\$ 289
mTOR	600-400	100 ug	Rabbit	WB, ELISA, IP	Hu, Ms, Rt	\$199
MyD88	500-7984	100 ug	Rabbit	WB, ELISA, IP	Hu, Ms, Rt	\$225
Myelin / Oligodendrocyte	500-7994	100 ug	Mouse	IF	Hu, Ms, Rt,	\$299
Myelin Basic Protein	500-1944	100 ug	Rabbit	IHC(P)	Hu	\$240
Myeloid Specific Marker	500-6244	100 ug	Mouse	IHC-P, IF, FC	Hu	\$229
MyoD1	500-8004	100 ug	Mouse	IP, IF	Hu, Ms, Rt	\$299
Myogenin	500-1964	100 ug	Mouse	IHC(P), WB, IP, IF, GS	Hu, Ms, Rt	\$280
Myoglobin	500-2994	100 ug	Rabbit	IHC(P), WB	Hu	\$149

Myosin Smooth Muscle Heavy Chain	500-5244	100 ug	Mouse	IHC-P	Hu	\$299
N-cadherin	500-10404	100 ug	Rabbit	IHC-P	Hu	\$280
Nck	500-8014	100 ug	Mouse	WB, IP	Hu	\$280
NCK2	500-11044	100 ug	Rabbit	IHC-P	Hu	\$259
NEFA	600-660	100 ug	Rabbit	WB, ELISA	Ms, Rt	\$235
Neurofibromin	620-260	100 ug	Rabbit	Wb, ELISA, IP	Hu	\$265
Neurofilament (160kDa)	500-5254	100 ug	Mouse	WB, IHC-P	Hu	\$249
Neurofilament (200kDa)	500-5264	100 ug	Mouse	WB, IHC-P	Hu	\$249
Neurofilament (200kDa)	500-5264	100 ug	Mouse	WB, IHC-P	Hu	\$249
Neurofilaments (200kDa&68kDa)	500-1984	100 ug	Mouse	IHC(P), WB, IP	Hu, Ms, Rt	\$279
Neuron Specific Enolase	500-6754	100 ug	Mouse	WB, IP, IHC-P	Hu	\$299
Neuropilin-1 (CT)	620-350	100 ug	Rabbit	Wb, ELISA, IP, IHC	Hu, Bv	\$299
Neutrophil Elastase	500-5284	100 ug	Mouse	IHC-P	Hu	\$289
NFIB	605-640	100 ug	Mouse	ELISA, WB, IHC	Hu	\$285
NFkB p50	500-3634	100 ug	Rabbit	IHC(P)	Hu	\$299
NFkB p65	500-2754	100 ug	Rabbit	IHC(P), WB	Hu, Rt, Rb	\$250
NFRKB	605-650	100 ug	Mouse	ELISA, WB, IHC	Hu	\$285
NFYB	605-660	100 ug	Mouse	ELISA, WB, IHC	Hu	\$285
NF-κB p100/p52	500-11454	100 ug	Rabbit	IHC, WB, ELISA, IP	Hu, Ms	\$299
NF-κB p105/p50	500-11464	100 ug	Rabbit	IHC, WB, ELISA	Hu, Ms	\$299
NGF-Receptor (p75NGFR)	500-6254	100 ug	Mouse	IHC-P, IF, FC	Hu, Rb, Mk	\$299
NKX3.1	602--420	100 ug	Rabbit	ELISA, WB, IP	Hu	\$220
NKX3-1	605-670	100 ug	Mouse	ELISA, WB, IHC	Hu	\$285
NPPB	602-560	100 ug	Rabbit	ELISA, WB, IP	Hu, Ms, Rt	\$299

NR2C1	605-680	100 ug	Mouse	ELISA, WB, IHC	Hu	\$285
NR2F1	605-690	100 ug	Mouse	ELISA, WB, IHC	Hu	\$285
NRBF2	605-700	100 ug	Mouse	ELISA, WB, IHC	Hu	\$285
OCT-1	601-440	100 ug	Rabbit	WB	Hu	\$315
Oct-2	500-4304	100 ug	Rabbit	IHC(P), WB, IP	Hu, Ms, Rt	\$195
Oct-3	500-4654	100 ug	Rabbit	WB	Hu	\$195
OCT-4	601-450	100 ug	Rabbit	WB	Hu	\$325
Osteopontin	500-3284	100 ug	Rabbit	IHC(P), WB	Hu, Pg, Dg	\$299
Osteopontin(SPP1)	600-600	100 ug	Rabbit	WB, ELISA	Rt, Ms	\$245
Ovalbumin	601-750	100 ug	Rabbit	ELISA., WB	Hu	\$299
Ovomucoid	601-770	100 ug	Rabbit	ELISA., WB	Hu	\$299
Ovotransferrin	601-760	100 ug	Rabbit	ELISA., WB	Hu	\$299
p130	500-6284	100 ug	Mouse	WB, IP, IHC-P, IF	Hu,Rt	\$289
p130cas	500-13724	100 ug	Rabbit	WB	Hu	\$299
p130cas	500-6294	100 ug	Mouse	WB, IP, IHC-P	Hu,Rt	\$299
p14ARF	500-4354	100 ug	Rabbit	IHC(P), WB	Hu, Ms, Rt	\$299
p15INK4b	500-6304	100 ug	Mouse	WB, IP, IHC-P, IF	Hu,Do	\$289
p16INK4a	500-6314	100 ug	Mouse	WB, IP, IHC-P, IF	Hu,Ms	\$279
p170 / MDR/ p-Glycoprotein	500-4274	100 ug	Mouse	IHC(P)	Hu	\$279
P170/p-Glycoprotein	500-13734	100 ug	Rabbit	WB	Hu	\$279
p18	500-13744	100 ug	Rabbit	WB	Hu, Ms, Rt	\$280
p19	500-8054	100 ug	Rabbit	WB, IP	Hu,Ms	\$245
p21	500-6334	100 ug	Mouse	IHC-P, IP, IF	Hu	\$245
p27	500-2604	100 ug	Rabbit	IHC(P), WB, IP	Hu, Ms, Rt	\$255

p300 / CBP	500-6344	100 ug	Mouse	IHC-P, IP, IF	Hu, Ms, Rt	\$299
p35	500-8064	100 ug	Mouse	IP	Hu	\$249
P38	500-10004	100 ug	Rabbit	WB, IHC	Hu, Ms, Rt	\$250
P504S	500-4404	100 ug	Rabbit	IHC(P)	Hu	\$280
p53	500-2014	100 ug	Rabbit	IHC(P), WB	Hu, Ms, Rt	\$199
p53	500-6774	100 ug	Mouse	WB, IP, IHC-P, FC	Hu, Ms, Rt,	\$299
p56-LCK (LSK)	602--360	100 ug	Rabbit	ELISA, WB, IP	Hu, Ms, Rt	\$199
p56-LCK (LSK) (Paired Y505)	602--350	100 ug	Rabbit	ELISA, WB, IP	Hu, Ms, Rt	\$220
p57	500-6354	100 ug	Mouse	IHC-P, IP	Hu,Ms	\$290
p63	500-4574	100 ug	Rabbit	IHC(P), WB	Hu	\$299
p70(Ku)	500-5994	100 ug	Mouse	WB, IP, IHC-P, IF	Hu,Mo	\$299
p70/p80(Ku)	500-6004	100 ug	Mouse	IHC-P, IP, IF, GSA	Hu, Ms, Rt	\$299
p70S6K	601-310	100 ug	Rabbit	ELISA, WB	Hu, Rt, Ms	\$215
P70S6K	500-9154	100 ug	Rabbit	WB, IP	Hu, Ms, Rt	\$289
p73	500-8074	100 ug	Rabbit	WB	Hu	\$280
p73a	500-8084	100 ug	Mouse	IP, IF, GSA	Hu,Mo	\$255
p73a/b	500-8094	100 ug	Mouse	IP, IF, GSA	Hu,Mo	\$255
p80(Ku))	500-7784	100 ug	Mouse	WB, IP, IF, FC	Hu,Mo	\$279
p95VAV	500-8104	100 ug	Mouse	WB, IP, IF	Hu,Ms	\$299
PAK4(non-phospho	600-040	100 ug	Rabbit	WB, IP, ELISA	Hu, Ms, Rt	\$295
Parathyroid Hormone	500-2784	100 ug	Rabbit	IHC(P)	Hu	\$299
Parathyroid Hormone Receptor Type 1	500-5324	100 ug	Mouse	WB, IHC-P	Hu	\$299
PAX3	605-710	100 ug	Mouse	ELISA, WB, IHC	Hu	\$285
PAX6	605-720	100 ug	Mouse	ELISA, WB, IHC	Hu	\$285

PAX7	605-730	100 ug	Mouse	ELISA, WB, IHC	Hu	\$285
PAX8	605-740	100 ug	Mouse	ELISA, WB, IHC	Hu	\$285
Paxillin	602--370	100 ug	Rabbit	ELISA, WB, IP, IHC	Hu, Ms, Rt	\$220
PCNA	500-2854	100 ug	Rabbit	IHC(P), WB	Hu	\$269
PCNA	500-6784	100 ug	Mouse	WB, IP, IHC-P, FC	Hu, Ms, Rt	\$290
PCSK9	601-650	100 ug	Rabbit	Elisa, WB, IHC	Hu, Rt, Ms	\$345
PDGF	500-3894	100 ug	Rabbit	IHC(P), WB, IF	Hu, Rt	\$299
Pdia 4	600-810	100 ug	Rabbit	WB, ELISA	Hu, Ms, Rt	\$245
PDX-1	601-590	100 ug	Rabbit	WB	Hu	\$345
PI-3-Kinase	500-8144	100 ug	Mouse	IF	Hu, Ms, Rt	\$289
PID/MTA2	500-10034	100 ug	Rabbit	WB	Hu, Ms, Rt	\$289
PKC	500-9234	100 ug	Rabbit	WB, IP	Hu, Ms, Rt	\$280
PKC epsilon	500-3584	100 ug	Rabbit	IHC(P), WB, IP	Hu, Ms, Rt	\$299
PKN	500-13764	100 ug	Rabbit	WB	Hu, Ms, Rt	\$265
PLAP	500-2044	100 ug	Rabbit	IHC(P)	Hu	\$199
Plasma Cell Marker	500-6374	100 ug	Mouse	IHC-P	Hu	\$269
Plasminogen	500-8154	100 ug	Mouse	WB	Hu	\$270
PLC gamma 1	500-8164	100 ug	Rabbit	WB, IP	Hu, Rt, Cw	\$299
PLC gamma2	500-12474	100 ug	Rabbit	IHC-P, WB	Hu, Ms, Rt	\$299
Plectin	600-770	100 ug	Rabbit	WB, ELISA	Hu, Ms, Rt	\$235
POU2F1	605-750	100 ug	Mouse	ELISA, WB, IHC	Hu	\$285
PPAR α	600-150	100 ug	Rabbit	WB, ELISA, IP	Hu	\$195
PPAR β	600-160	100 ug	Rabbit	WB, ELISA, IP	Hu	\$195
PPAR δ	600-180	100 ug	Rabbit	WB, ELISA, IP	Hu	\$195

PPAR γ	600-170	100 ug	Rabbit	WB, ELISA, IP	Hu	\$195
PPAR-gamma	500-4664	100 ug	Rabbit	WB	Hu	\$299
Presenillin	500-3484	100 ug	Rabbit	IHC(P)	Hu	\$299
PRL b-subunit	603-620	100 ug	Mouse	ELISA, WB, IHC	Hu	\$289
PRL b-subunit	603-630	100 ug	Mouse	ELISA, WB, IHC	Hu	\$289
Progesterone Receptor	500-2074	100 ug	Rabbit	IHC(P), WB	Hu	\$299
Prolactin Receptor	500-5364	100 ug	Mouse	WB, IHC-P	Hu	\$299
Prostate Apoptosis Response Protein-4	500-3424	100 ug	Rabbit	IHC(P), WB	Hu, Ms, Rt	\$299
Prostate Specific Acid Phosphatase	500-6394	100 ug	Mouse	IHC-P, IF	Hu, Rt, Rb, Dg	\$199
Protein Kinase C	500-8194	100 ug	Mouse	WB	Hu, Ms, Rt, Cw	\$260
PSA	600-700	100 ug	Rabbit	WB, ELISA, IHC(P)	Hu	\$195
PSA	603-660	100 ug	Mouse	ELISA, WB, IHC	Hu	\$285
pTEN	601-850	100 ug	Rabbit	ELISA, IHC(P), WB	Hu	\$225
pTEN (Paired S380)	602--150	100 ug	Rabbit	ELISA, WB, IP	Hu, Ms, Rt	\$220
Raf -A	500-7074	100 ug	Rabbit	WB	Hu, Ms, Rt	\$245
Raf1	500-8214	100 ug	Rabbit	WB, IP	Hu, Ms, Rt	\$245
Ras	500-4384	100 ug	Rabbit	IHC(P)	Hu, Ms, Rt	\$299
Ras18	500-8234	100 ug	Rabbit	WB	Hu	\$249
RB1	605-760	100 ug	Mouse	ELISA, WB, IHC	Hu	\$285
RCAS1	602-610	100 ug	Rabbit	ELISA, WB, IP	Hu, Ms, Rt	\$299
Renal Cell Carcinoma	500-6414	100 ug	Mouse	WB, IHC-P	Hu,Rt	\$299
Retinoblastoma	500-4314	100 ug	Rabbit	IHC(P), WB	Hu, Ms, Rt	\$299
Retinoblastoma	500-6814	100 ug	Mouse	WB, IP, IHC-P, IF, FC	Hu	\$289
Retinoic Acid Receptor beta	500-4374	100 ug	Rabbit	IHC(P)	Hu	\$299

Retinol Binding Protein	500-8254	100 ug	Mouse	WB	Hu, Ms, Rt	\$299
Rho	500-10054	100 ug	Rabbit	WB	Hu, Ms, Rt	\$299
Rho Kinase/ROCKII (IN)	602-860	100 ug	Rabbit	ELISA, WB, IP	Hu, Ms, Rt, Ck, Bv, Canis	\$245
Rho Kinase/ROCKII (Paired T249)	602-880	100 ug	Rabbit	ELISA, WB, IP	Hu, Ms, Rt, Ck, Bv, Canis	\$265
Rho Kinase/ROCKII (Paired T396)	602-850	100 ug	Rabbit	ELISA, WB, IP	Hu, Ms, Rt, Ck, Bv, Canis	\$255
Rho Kinase/ROCKII (pT249)	602-870	100 ug	Rabbit	ELISA, WB, IP	Hu, Ms, Rt, Ck, Bv, Canis	\$295
RPA1	605-770	100 ug	Mouse	ELISA, WB, IHC	Hu	\$285
S100	500-2144	100 ug	Rabbit	IHC(P)	Hu	\$199
S100	500-6824	100 ug	Mouse	IHC-P	Hu, Ms, Rt	\$219
SAPOSIN(PSAP)	600-470	100 ug	Rabbit	WB, ELISA	Hu	\$220
SATB2	605-780	100 ug	Mouse	ELISA, WB, IHC	Hu	\$285
Selectin E (IN)	600-850	100 ug	Rabbit	WB, ELISA	Hu, Ms, Rt	\$225
Selectin E (N term)	600-840	100 ug	Rabbit	WB, ELISA	Hu, , Rt	\$220
Sentrin-2	500-10504	100 ug	Rabbit	WB	Hu	\$249
Shaker	602-890	100 ug	Rabbit	ELISA, WB, IP	Hu, Dros	\$299
Sialyltransferase	602-900	100 ug	Rabbit	ELISA, WB, IP	Hu, Dros	\$299
SLC10a4	600-070	100 ug	Rabbit	Elisa, WB	Ms/Rt	\$299
SLC30A9	605-790	100 ug	Mouse	ELISA, WB, IHC	Hu	\$285
SMAD1	605-800	100 ug	Mouse	ELISA, WB, IHC	Hu	\$285
SMAD4	605-810	100 ug	Mouse	ELISA, WB, IHC	Hu	\$285
SMN (Survival of motor neuron)	601-720	100 ug	Rabbit	ELISA., WB	Hu	\$325
SOCS1	600-520	100 ug	Rabbit	WB, ELISA	Hu, Ms, Rt	\$199
SOCS2	600-530	100 ug	Rabbit	WB, ELISA	Hu, Ms, Rt	\$199

SOCS3	600-540	100 ug	Rabbit	WB, ELISA	Hu, Ms, Rt	\$199
SOCS-4	500-10164	100 ug	Rabbit	WB	Hu	\$215
SOCS-5	500-10174	100 ug	Rabbit	WB	Hu, Ms	\$219
Somatostatin	500-2164	100 ug	Rabbit	IHC(P)	Hu	\$289
Somatostatin Receptor 1	500-4094	100 ug	Rabbit	IHC(P)	Hu, Ms, Rt	\$299
SOX-1	601-480	100 ug	Rabbit	WB	Hu	\$315
SOX12	605-820	100 ug	Mouse	ELISA, WB, IHC	Hu	\$285
SOX-14	601-540	100 ug	Rabbit	WB	Hu	\$315
SOX-17	601-550	100 ug	Rabbit	WB	Hu	\$345
SOX-2	601-490	100 ug	Rabbit	WB	Hu	\$299
SOX-3	601-500	100 ug	Rabbit	WB	Hu	\$299
SOX-4	601-510	100 ug	Rabbit	WB	Hu	\$349
SOX-6	601-520	100 ug	Rabbit	WB	Hu	\$299
SOX-9	620-290	100 ug	Rabbit	Wb, ELISA, IP	Hu, Ms, Rt	\$315
SOX-9 (paired S181)	620-280	100 ug	Rabbit	Wb, ELISA, IP	Hu, Ms, Rt	\$299
SP1	605-830	100 ug	Mouse	ELISA, WB, IHC	Hu	\$285
SPHK1	600-120	100 ug	Rabbit	WB, ELISA,	Hu	\$199
SPHK2	601-660	100 ug	Rabbit	WB, ELISA,	Hu	\$199
STAT1	500-9314	100 ug	Rabbit	WB, IP	Hu, Ms, Rt	\$235
STAT1 (Paired Y701)	620-170	100 ug	Rabbit	WB, IP	Hu, Ms, Rt	\$235
STAT2	500-12374	100 ug	Rabbit	IHC-P, WB	Hu	\$245
STAT3	500-3694	100 ug	Rabbit	IHC(P), WB, IP	Hu, Ms, Rt	\$220
STAT3	605-840	100 ug	Mouse	ELISA, WB, IHC	Hu	\$285
STAT4	500-12194	100 ug	Rabbit	IHC, WB, ELISA, IP	Hu, Ms	\$225

STAT5	500-8364	100 ug	Rabbit	WB	Hu	\$225
STAT5 (Paired Y694)	602--140	100 ug	Rabbit	ELISA, WB, IP	Hu, Ms, Rt	\$220
STAT5a	500-3594	100 ug	Rabbit	IHC(P), WB, GS	Hu, Ms, Rt	\$215
STAT5B	605-850	100 ug	Mouse	ELISA, WB, IHC	Hu	\$285
STAT5b	500-8374	100 ug	Rabbit	WB, GSA	Hu, Ms, Rt	\$219
STAT6	500-4294	100 ug	Rabbit	IHC(P), WB, IP	Hu, Ms, Rt	\$215
STAT6	605-860	100 ug	Mouse	ELISA, WB, IHC	Hu	\$285
STK17A	605-870	100 ug	Mouse	ELISA, WB, IHC	Hu	\$285
Synaptophysin	500-2174	100 ug	Rabbit	IHC(P), WB	Hu	\$199
Synuclein	500-8394	100 ug	Mouse	WB	Hu	\$245
Synuclein alpha	500-2684	100 ug	Rabbit	IHC(P)	Hu, Rt	\$299
Synuclein beta	500-2774	100 ug	Rabbit	IHC(P)	Hu, Rt	\$299
TAF13	605-880	100 ug	Mouse	ELISA, WB, IHC	Hu	\$285
TAF15	605-890	100 ug	Mouse	ELISA, WB, IHC	Hu	\$285
TAF5	605-900	100 ug	Mouse	ELISA, WB, IHC	Hu	\$285
TAF6	605-910	100 ug	Mouse	ELISA, WB, IHC	Hu	\$285
TAFA2	600-460	100 ug	Rabbit	IHC, WB, ELISA	Hu, Ms, Rt	\$220
Tat epitope 1	603-690	100 ug	Mouse	ELISA, WB, IHC	Hu	\$289
Tat epitope 2	603-710	100 ug	Mouse	ELISA, WB, IHC	Hu	\$289
Tau	500-8414	100 ug	Mouse	WB, IF	Hu, Ms, Rt	\$239
TBP	605-920	100 ug	Mouse	ELISA, WB, IHC	Hu	\$285
TCEA3	605-930	100 ug	Mouse	ELISA, WB, IHC	Hu	\$285
Telomerase	500-11034	100 ug	Rabbit	IHC-P	Hu	\$255
Tenascin	500-6474	100 ug	Mouse	IHC-P	Hu	\$289
Tenascin C	600-780	100 ug	Rabbit	WB, ELISA	Ms	\$240

TFAP2C	605-940	100 ug	Mouse	ELISA, WB, IHC	Hu	\$285
TFAP4	605-950	100 ug	Mouse	ELISA, WB, IHC	Hu	\$285
TFDP2	605-960	100 ug	Mouse	ELISA, WB, IHC	Hu	\$285
TFE-3	500-10474	100 ug	Rabbit	WB	Hu	\$289
TGF beta 1	500-11264	100 ug	Rabbit	IHC-P	Hu	\$299
TGF beta 3	500-3944	100 ug	Rabbit	IHC(P), WB, IP	Hu, Ms, Rt	\$299
TGF beta R1	500-12344	100 ug	Rabbit	IHC-P, WB	Hu, Ms, Rt	\$299
TGF beta Receptor II	500-11244	100 ug	Rabbit	IHC-P	Hu	\$289
TGF beta Receptor III	500-11234	100 ug	Rabbit	IHC-P	Hu	\$290
TGF-alpha	500-3734	100 ug	Rabbit	IHC(P)	Hu	\$299
TGF-beta 2	500-3784	100 ug	Rabbit	IHC(P), WB, IP	Hu, Ms, Rt	\$299
Thyroglobulin	500-5454	100 ug	Mouse	WB, IHC-P, FC	Hu, Ms, Rt	\$199
Thyroid Hormone Receptor beta, Human	500-5464	100 ug	Mouse	IHC-P	Hu,Do	\$299
Thyroid Hormone Receptor, Human	500-5474	100 ug	Mouse	IHC-P	Hu, Ms, Rt	\$299
TK1 (Thymidine Kinase)	601-690	100 ug	Rabbit	Elisa, WB, IHC	Lyco	\$355
TNF alpha	500-8614	100 ug	Rat	ELISA	Hu	\$299
TNFa	500-8444	100 ug	Mouse	WB	Hu	\$299
Tpd52 (Tumor Protein D52)	600-610	100 ug	Rabbit	WB, ELISA	Ms	\$230
Trimethyl-Histone H3(Lys27)	602-730	100 ug	Rabbit	ELISA, WB, IP	Hu, Ms, Rt	\$355
Trimethyl-Histone H3(Lys4)	602-710	100 ug	Rabbit	ELISA, WB, IP	Hu, Ms, Rt	\$355
Trimethyl-Histone H3(Lys9)	602-720	100 ug	Rabbit	ELISA, WB, IP	Hu, Ms, Rt	\$355
Troponin I	600-680	100 ug	Rabbit	WB, ELISA	Hu, Ms, Rt	\$220
Troponin I, cardiac isoform	500-3234	100 ug	Mouse	IHC(P), WB, IP, ELISA	Hu	\$225
Troponin T	601-820	100 ug	Rabbit	ELISA, IHC(P), WB	Hu, Ms, Rt	\$315

Troponin T, cardiac isoform	500-3244	100 ug	Mouse	ELISA, IHC(P), WB	Hu, Ms, Rt	\$230
TSH	600-570	100 ug	Mouse	IHC, WB, ELISA	Hu	\$220
TSH b-subunit	603-720	100 ug	Mouse	ELISA, WB, IHC	Hu	\$289
TSH b-subunit	603-760	100 ug	Mouse	ELISA, WB, IHC	Hu	\$289
TUBD1	605-970	100 ug	Mouse	ELISA, WB, IHC	Hu	\$285
Tubulin alpha	500-4134	100 ug	Rabbit	IHC(P), WB, IP	Hu, Ms, Rt	\$299
Tubulin beta	500-3814	100 ug	Rabbit	IHC(P), WB, IP	Hu, Ms, Rt	\$299
Tubulin gamma	500-10334	100 ug	Rabbit	IHC-P, WB	Hu, Ms, Rt	\$279
Tubulin-a	500-6874	100 ug	Mouse	WB, IP, IHC-P, IF	Hu, Ms, Rt	\$270
Tubulin-b	500-6514	100 ug	Mouse	WB, IHC-P, IF	Hu, Ms, R	\$269
Ubiquitinated H2A	602-820	100 ug	Rabbit	ELISA, WB, IP	Hu, Ms, Rt	\$355
Ubiquitin	500-3354	100 ug	Rabbit	IHC(P)	Hu	\$185
uNOS	500-3934	100 ug	Rabbit	IHC(P), WB	Hu, Ms, Rt	\$199
Vascular Endothelial Growth Factor(VEGF)	500-5494	100 ug	Mouse	WB, IHC-P	Hu	\$255
VASA	601-360	100 ug	Rabbit	ELISA, WB, IHC	Hu	\$265
VASA (Non-phosphospecific)	601-350	100 ug	Rabbit	ELISA, WB, IHC	Hu	\$275
VASA (phosphospecific)	601-340	100 ug	Rabbit	ELISA, WB, IHC	Hu	\$299
Vasopressin V1b Receptor	500-10214	100 ug	Rabbit	WB	Hu	\$299
VEGFR-2(Paired Y951) (CD309)	602--090	100 ug	Rabbit	ELISA, WB, IP	Hu, Ms, Rt	\$220
Villin 2/ezrin/p80	600-790	100 ug	Rabbit	WB, ELISA	Hu, Ms, Rt	\$245
WDR19	602-550	100 ug	Rabbit	ELISA, WB, IP	Hu, Ms, Rt	\$299
YEATS4	605-980	100 ug	Mouse	ELISA, WB, IHC	Hu	\$285

Epitope-Tag Antibodies

Description	Catalogue	Volume	Host	Application	Price
c-Myc	600-510	100 ug	Rabbit	WB, ELISA	\$199
E-Tag	600-420	100 ug	Rabbit	WB, ELISA, IP	\$199
FLAG-tag	610-020	100 ug	Rabbit	WB, ELISA, IP	\$195
GFP	610-030	100 ug	Rabbit	WB, ELISA, IP	\$220
His-Tag	600-500	100 ug	Rabbit	WB, ELISA	\$189
Myc-Tag	610-010	100 ug	Rabbit	WB, ELISA, IP	\$195

Secondary Antibodies

Description	Catalogue	Price	Volume	Host	Application
Goat anti mouse IgG (H+L) (unconjugated)	511-010	\$59	500 ug	Goat	ELISA, WB, IHC, IF
Goat anti mouse IgG (H+L) (unconjugated)	511-010-1	\$40	200 ug	Goat	ELISA, WB, IHC, IF
Goat anti mouse IgG (H+L) (Biotinylated)	511-011	\$69	500 ug	Goat	ELISA, WB, IHC, IF
Goat anti mouse IgG (H+L) (Biotinylated)	511-011-1	\$45	200 ug	Goat	ELISA, WB, IHC, IF
Goat anti mouse IgG (H+L) (HRP-Linked)	511-012	\$69	500 ug	Goat	ELISA, WB, IHC, IF
Goat anti mouse IgG (H+L) (HRP-Linked)	511-012-1	\$42	200 ug	Goat	ELISA, WB, IHC, IF
Goat anti mouse IgG (H+L) (AP-linked)	511-013	\$79	500 ug	Goat	ELISA, WB, IHC, IF
Goat anti mouse IgG (H+L) (AP-linked)	511-013-1	\$49	200 ug	Goat	ELISA, WB, IHC, IF
Goat anti mouse IgG (H+L) (FITC-linked)	511-014	\$129	500 ug	Goat	ELISA, WB, IHC, IF
Goat anti mouse IgG (H+L) (FITC-linked)	511-014-1	\$89	200 ug	Goat	ELISA, WB, IHC, IF
Goat anti mouse IgG (H+L) (PE-linked)	511-015	\$149	500 ug	Goat	ELISA, WB, IHC, IF
Goat anti mouse IgG (H+L) (PE-linked)	511-015-1	\$149	200 ug	Goat	ELISA, WB, IHC, IF

Goat anti mouse IgG (H+L) (APC-linked)	511-016	\$149	500 ug	Goat	ELISA, WB, IHC, IF
Goat anti mouse IgG (H+L) (APC-linked)	511-016-1	\$149	200 ug	Goat	ELISA, WB, IHC, IF
Goat anti mouse IgG (H+L) (Cy5-linked)	511-017	\$149	500 ug	Goat	ELISA, WB, IHC, IF
Goat anti mouse IgG (H+L) (Cy5-linked)	511-017-1	\$149	200 ug	Goat	ELISA, WB, IHC, IF
Goat anti rabbit IgG (H+L) (unconjugated)	511-020	\$59	500 ug	Goat	ELISA, WB, IHC, IF
Goat anti rabbit IgG (H+L) (unconjugated)	511-020-1	\$59	200 ug	Goat	ELISA, WB, IHC, IF
Goat anti rabbit IgG (H+L) (Biotinylated)	511-021	\$69	500 ug	Goat	ELISA, WB, IHC, IF
Goat anti rabbit IgG (H+L) (Biotinylated)	511-021-1	\$69	200 ug	Goat	ELISA, WB, IHC, IF
Goat anti rabbit IgG (H+L) (HRP-Linked)	511-022	\$69	500 ug	Goat	ELISA, WB, IHC, IF
Goat anti rabbit IgG (H+L) (HRP-Linked)	511-022-1	\$69	200 ug	Goat	ELISA, WB, IHC, IF
Goat anti rabbit IgG (H+L) (AP-linked)	511-023	\$79	500 ug	Goat	ELISA, WB, IHC, IF
Goat anti rabbit IgG (H+L) (AP-linked)	511-023-1	\$79	200 ug	Goat	ELISA, WB, IHC, IF
Goat anti rabbit IgG (H+L) (FITC-linked)	511-024	\$129	500 ug	Goat	ELISA, WB, IHC, IF
Goat anti rabbit IgG (H+L) (FITC-linked)	511-024-1	\$89	200 ug	Goat	ELISA, WB, IHC, IF
Goat anti rabbit IgG (H+L) (PE-linked)	511-025	\$149	500 ug	Goat	ELISA, WB, IHC, IF
Goat anti rabbit IgG (H+L) (PE-linked)	511-025-1	\$95	500 ug	Goat	ELISA, WB, IHC, IF
Goat anti rabbit IgG (H+L) (APC-linked)	511-026	\$149	500 ug	Goat	ELISA, WB, IHC, IF
Goat anti rabbit IgG (H+L) (APC-linked)	511-026-1	\$95	200 ug	Goat	ELISA, WB, IHC, IF
Goat anti rabbit IgG (H+L) (Cy5-linked)	511-027	\$149	500 ug	Goat	ELISA, WB, IHC, IF
Goat anti rabbit IgG (H+L) (Cy5-linked)	511-027-1	\$95	200 ug	Goat	ELISA, WB, IHC, IF
Goat anti chicken IgY (H+L) (unconjugated)	511-030	\$59	500 ug	Goat	ELISA, WB, IHC, IF
Goat anti chicken IgY (H+L) (unconjugated)	511-030-1	\$59	200 ug	Goat	ELISA, WB, IHC, IF
Goat anti chicken IgY (H+L) (Biotinylated)	511-031	\$69	500 ug	Goat	ELISA, WB, IHC, IF
Goat anti chicken IgY (H+L) (Biotinylated)	511-031-1	\$69	200 ug	Goat	ELISA, WB, IHC, IF
Goat anti chicken IgY (H+L) (HRP-Linked)	511-032	\$69	500 ug	Goat	ELISA, WB, IHC, IF

Goat anti chicken IgY (H+L) (HRP-Linked)	511-032-1	\$69	200 ug	Goat	ELISA, WB, IHC, IF
Goat anti chicken IgY (H+L) (AP-linked)	511-033	\$79	500 ug	Goat	ELISA, WB, IHC, IF
Goat anti chicken IgY (H+L) (AP-linked)	511-033-1	\$79	200 ug	Goat	ELISA, WB, IHC, IF
Goat anti chicken IgY (H+L) (FITC-linked)	511-034	\$129	500 ug	Goat	ELISA, WB, IHC, IF
Goat anti chicken IgY (H+L) (FITC-linked)	511-034-1	\$89	200 ug	Goat	ELISA, WB, IHC, IF
Goat anti chicken IgY (H+L) (PE-linked)	511-035	\$149	500 ug	Goat	ELISA, WB, IHC, IF
Goat anti chicken IgY (H+L) (PE-linked)	511-035-1	\$95	200 ug	Goat	ELISA, WB, IHC, IF
Goat anti chicken IgY (H+L) (APC-linked)	511-036	\$149	500 ug	Goat	ELISA, WB, IHC, IF
Goat anti chicken IgY (H+L) (APC-linked)	511-036-1	\$95	200 ug	Goat	ELISA, WB, IHC, IF
Goat anti chicken IgY (H+L) (Cy5-linked)	511-037	\$149	500 ug	Goat	ELISA, WB, IHC, IF
Goat anti chicken IgY (H+L) (Cy5-linked)	511-037-1	\$95	200 ug	Goat	ELISA, WB, IHC, IF
Rabbit anti Mouse IgG (H+L) (Unconjugated)	511-040	\$59	500 ug	Rabbit	ELISA, WB, IHC, IF
Rabbit anti Mouse IgG (H+L) (Unconjugated)	511-040-1	\$45	200 ug	Rabbit	ELISA, WB, IHC, IF
Rabbit anti mouse IgG (H+L) (Biotinylated)	511-041	\$69	500 ug	Rabbit	ELISA, WB, IHC, IF
Rabbit anti mouse IgG (H+L) (Biotinylated)	511-041-1	\$49	200 ug	Rabbit	ELISA, WB, IHC, IF
Rabbit anti mouse IgG (H+L) (HRP-Linked)	511-042	\$69	500 ug	Rabbit	ELISA, WB, IHC, IF
Rabbit anti mouse IgG (H+L) (HRP-Linked)	511-042-1	\$49	200 ug	Rabbit	ELISA, WB, IHC, IF
Rabbit anti mouse IgG (H+L) (AP-linked)	511-043	\$79	500 ug	Rabbit	ELISA, WB, IHC, IF
Rabbit anti mouse IgG (H+L) (AP-linked)	511-043-1	\$55	200 ug	Rabbit	ELISA, WB, IHC, IF
Rabbit anti mouse IgG (H+L) (FITC-linked)	511-044	\$129	500 ug	Rabbit	ELISA, WB, IHC, IF
Rabbit anti mouse IgG (H+L) (FITC-linked)	511-044-1	\$89	200 ug	Rabbit	ELISA, WB, IHC, IF
Rabbit anti mouse IgG (H+L) (PE-linked)	511-045	\$149	500 ug	Rabbit	ELISA, WB, IHC, IF
Rabbit anti mouse IgG (H+L) (PE-linked)	511-045-1	\$95	200 ug	Rabbit	ELISA, WB, IHC, IF
Rabbit anti mouse IgG (H+L) (APC-linked)	511-046	\$149	500 ug	Rabbit	ELISA, WB, IHC, IF
Rabbit anti mouse IgG (H+L) (APC-linked)	511-046-1	\$95	200 ug	Rabbit	ELISA, WB, IHC, IF

Rabbit anti mouse IgG (H+L) (Cy5-linked)	511-047	\$149	500 ug	Rabbit	ELISA, WB, IHC, IF
Rabbit anti mouse IgG (H+L) (Cy5-linked)	511-047-1	\$95	200 ug	Rabbit	ELISA, WB, IHC, IF
Rabbit anti chicken IgY (H+L) (unconjugated)	511-050	\$59	500 ug	Rabbit	ELISA, WB, IHC, IF
Rabbit anti chicken IgY (H+L) (unconjugated)	511-050-1	\$45	200 ug	Rabbit	ELISA, WB, IHC, IF
Rabbit anti chicken IgY (H+L) (Biotinylated)	511-051	\$69	500 ug	Rabbit	ELISA, WB, IHC, IF
Rabbit anti chicken IgY (H+L) (Biotinylated)	511-051-1	\$55	200 ug	Rabbit	ELISA, WB, IHC, IF
Rabbit anti chicken IgY (H+L) (HRP-Linked)	511-052	\$69	500 ug	Rabbit	ELISA, WB, IHC, IF
Rabbit anti chicken IgY (H+L) (HRP-Linked)	511-052-1	\$55	200 ug	Rabbit	ELISA, WB, IHC, IF
Rabbit anti chicken IgY (H+L) (AP-linked)	511-053	\$79	500 ug	Rabbit	ELISA, WB, IHC, IF
Rabbit anti chicken IgY (H+L) (AP-linked)	511-053-1	\$59	200 ug	Rabbit	ELISA, WB, IHC, IF
Rabbit anti chicken IgY (H+L) (FITC-linked)	511-054	\$129	500 ug	Rabbit	ELISA, WB, IHC, IF
Rabbit anti chicken IgY (H+L) (FITC-linked)	511-054-1	\$89	200 ug	Rabbit	ELISA, WB, IHC, IF
Rabbit anti chicken IgY (H+L) (PE-linked)	511-055	\$149	500 ug	Rabbit	ELISA, WB, IHC, IF
Rabbit anti chicken IgY (H+L) (PE-linked)	511-055-1	\$95	200 ug	Rabbit	ELISA, WB, IHC, IF
Rabbit anti chicken IgY (H+L) (APC-linked)	511-056	\$149	500 ug	Rabbit	ELISA, WB, IHC, IF
Rabbit anti chicken IgY (H+L) (APC-linked)	511-056-1	\$95	200 ug	Rabbit	ELISA, WB, IHC, IF
Rabbit anti chicken IgY (H+L) (Cy5-linked)	511-057	\$149	500 ug	Rabbit	ELISA, WB, IHC, IF
Rabbit anti chicken IgY (H+L) (Cy5-linked)	511-057-1	\$95	200 ug	Rabbit	ELISA, WB, IHC, IF
Rabbit anti goat IgG (H+L) (unconjugated)	511-060	\$59	500 ug	Rabbit	ELISA, WB, IHC, IF
Rabbit anti goat IgG (H+L) (unconjugated)	511-060-1	\$45	200 ug	Rabbit	ELISA, WB, IHC, IF
Rabbit anti goat IgG (H+L) (Biotinylated)	511-061	\$69	500 ug	Rabbit	ELISA, WB, IHC, IF
Rabbit anti goat IgG (H+L) (Biotinylated)	511-061-1	\$55	200 ug	Rabbit	ELISA, WB, IHC, IF
Rabbit anti goat IgG (H+L) (HRP-Linked)	511-062	\$69	500 ug	Rabbit	ELISA, WB, IHC, IF
Rabbit anti goat IgG (H+L) (HRP-Linked)	511-062-1	\$55	200 ug	Rabbit	ELISA, WB, IHC, IF
Rabbit anti goat IgG (H+L) (AP-linked)	511-063	\$79	500 ug	Rabbit	ELISA, WB, IHC, IF

Rabbit anti goat IgG (H+L) (AP-linked)	511-063-1	\$59	200 ug	Rabbit	ELISA, WB, IHC, IF
Rabbit anti goat IgG (H+L) (FITC-linked)	511-064	\$129	500 ug	Rabbit	ELISA, WB, IHC, IF
Rabbit anti goat IgG (H+L) (FITC-linked)	511-064-1	\$89	200 ug	Rabbit	ELISA, WB, IHC, IF
Rabbit anti goat IgG (H+L) (PE-linked)	511-065	\$149	500 ug	Rabbit	ELISA, WB, IHC, IF
Rabbit anti goat IgG (H+L) (PE-linked)	511-065-1	\$95	200 ug	Rabbit	ELISA, WB, IHC, IF
Rabbit anti goat IgG (H+L) (APC-linked)	511-066	\$149	500 ug	Rabbit	ELISA, WB, IHC, IF
Rabbit anti goat IgG (H+L) (APC-linked)	511-066-1	\$95	200 ug	Rabbit	ELISA, WB, IHC, IF
Rabbit anti goat IgG (H+L) (Cy5-linked)	511-067	\$149	500 ug	Rabbit	ELISA, WB, IHC, IF
Rabbit anti goat IgG (H+L) (Cy5-linked)	511-067-1	\$95	200 ug	Rabbit	ELISA, WB, IHC, IF
Goat anti Human IgG (H+L) (unconjugated)	511-070	\$59	500 ug	Goat	ELISA, WB, IHC, IF
Goat anti Human IgG (H+L) (unconjugated)	511-070-1	\$45	200 ug	Goat	ELISA, WB, IHC, IF
Goat anti Human IgG (H+L) (Biotin-linked)	511-071	\$69	500 ug	Goat	ELISA, WB, IHC, IF
Goat anti Human IgG (H+L) (Biotin-linked)	511-071-1	\$50	200 ug	Goat	ELISA, WB, IHC, IF
Goat anti Human IgG (H+L) (HRP-linked)	511-072	\$69	500 ug	Goat	ELISA, WB, IHC, IF
Goat anti Human IgG (H+L) (HRP-linked)	511-072-1	\$45	200 ug	Goat	ELISA, WB, IHC, IF
Goat anti Human IgG (H+L) (AP-linked)	511-073	\$79	500 ug	Goat	ELISA, WB, IHC, IF
Goat anti Human IgG (H+L) (AP-linked)	511-073-1	\$60	200 ug	Goat	ELISA, WB, IHC, IF
Goat anti Human IgG (H+L) (FITC-linked)	511-074	\$129	500 ug	Goat	ELISA, WB, IHC, IF
Goat anti Human IgG (H+L) (FITC-linked)	511-074-1	\$89	200 ug	Goat	ELISA, WB, IHC, IF
Goat anti Human IgG (H+L) (PE-linked)	511-075	\$149	500 ug	Goat	ELISA, WB, IHC, IF
Goat anti Human IgG (H+L) (PE-linked)	511-075-1	\$95	200 ug	Goat	ELISA, WB, IHC, IF
Goat anti Human IgG (H+L) (APC-linked)	511-076	\$149	500 ug	Goat	ELISA, WB, IHC, IF
Goat anti Human IgG (H+L) (APC-linked)	511-076-1	\$95	200 ug	Goat	ELISA, WB, IHC, IF
Goat anti Human IgG (H+L) (Cy5-linked)	511-077	\$149	500 ug	Goat	ELISA, WB, IHC, IF
Goat anti Human IgG (H+L) (Cy5-linked)	511-077-1	\$95	200 ug	Goat	ELISA, WB, IHC, IF

Streptavidin (HRP-linked)	511-092	\$149	500 ug	N/A	ELISA, WB, IHC, IF
Streptavidin (HRP-linked)	511-092-1	\$95	200 ug	N/A	ELISA, WB, IHC, IF
Streptavidin (AP-linked)	511-093	\$159	500 ug	N/A	ELISA, WB, IHC, IF
Streptavidin (AP-linked)	511-093-1	\$105	200 ug	N/A	ELISA, WB, IHC, IF
Streptavidin (FITC-linked)	511-094	\$179	500 ug	N/A	ELISA, WB, IHC, IF
Streptavidin (FITC-linked)	511-094-1	\$125	200 ug	N/A	ELISA, WB, IHC, IF
Goat anti Rat IgG (H+L) (unconjugated)	511-110	\$59	500 ug	Goat	ELISA, WB, IHC, IF
Goat anti Rat IgG (H+L) (unconjugated)	511-110-1	\$40	200 ug	Goat	ELISA, WB, IHC, IF
Goat anti Rat IgG (H+L) (Biotin-linked)	511-111	\$69	500 ug	Goat	ELISA, WB, IHC, IF
Goat anti Rat IgG (H+L) (Biotin-linked)	511-111-1	\$49	200 ug	Goat	ELISA, WB, IHC, IF
Goat anti Rat IgG (H+L) (HRP-Linked)	511-112	\$69	500 ug	Goat	ELISA, WB, IHC, IF
Goat anti Rat IgG (H+L) (HRP-Linked)	511-112-1	\$49	200 ug	Goat	ELISA, WB, IHC, IF
Goat anti Rat IgG (H+L) (AP-linked)	511-113	\$79	500 ug	Goat	ELISA, WB, IHC, IF
Goat anti Rat IgG (H+L) (AP-linked)	511-113-1	\$49	200 ug	Goat	ELISA, WB, IHC, IF
Goat anti Rat IgG (H+L) (FITC-linked)	511-114	\$129	500 ug	Goat	ELISA, WB, IHC, IF
Goat anti Rat IgG (H+L) (FITC-linked)	511-114-1	\$89	200 ug	Goat	ELISA, WB, IHC, IF
Goat anti Rat IgG (H+L) (PE-linked)	511-115	\$149	500 ug	Goat	ELISA, WB, IHC, IF
Goat anti Rat IgG (H+L) (PE-linked)	511-115-1	\$105	200 ug	Goat	ELISA, WB, IHC, IF
Goat anti Rat IgG (H+L) (APC-linked)	511-116	\$149	500 ug	Goat	ELISA, WB, IHC, IF
Goat anti Rat IgG (H+L) (APC-linked)	511-116-1	\$105	200 ug	Goat	ELISA, WB, IHC, IF
Goat anti Rat IgG (H+L) (Cy5-linked)	511-117	\$149	500 ug	Goat	ELISA, WB, IHC, IF
Goat anti Rat IgG (H+L) (Cy5-linked)	511-117-1	\$105	200 ug	Goat	ELISA, WB, IHC, IF

Antibody Reagents

Reagents:	Catalogue	Price
Rec Protein A	800-00	\$125
Ab ^{MAX} Maleimide-activated GGG	800-100GGG	\$155
Ab ^{MAX} His-Trap Pre-packed column	800-10H	\$250
Ab ^{MAX} Maleimide-activated OVA	800-110OVA	\$165
Ab ^{MAX} Maleimide-activated THY	800-120THY	\$215
Ab ^{MAX} Maleimide-activated PPD	800-130PPD	\$395
Ab ^{MAX} Protein A Pre-packed column	800-20A	\$255
Ab ^{MAX} Antibody Purification Kit	800-30AP	\$395
Ab ^{MAX} Column Prep Kit (SH-reactive)	800-40C	\$345
Ab ^{MAX} Column Prep Kit (NH ₂ -reactive)	800-50N	\$345
Ab ^{MAX} Column Prep Kit (COOH-reactive)	800-60CAR	\$345
Ab ^{MAX} Column Prep Kit (MAP Peptide)	800-70MAP	\$345
Ab ^{MAX} Maleimide-activated KLH	800-80KLH	\$185
Ab ^{MAX} Maleimide-activated BSA	800-90BSA	\$145

Assay Kits

Description	Catalogue	Price
Ab ^{MAX} Human Midkine ELISA Kit	700-11A	\$399
Ab ^{MAX} Fab Fragment Kit	700-21	\$399
Ab ^{MAX} F(ab) ₂ Fragment Kit	700-31	\$399
Ab ^{MAX} Amine-Reactive Biotinylation Kit	700-41	\$295
Ab ^{MAX} Sulfyl-Reactive Biotinylation Kit	700-42	\$295
Ab ^{MAX} Immunoprecipitation Kit	700-51	\$295
Ab ^{MAX} Mouse IgG Capture Immunoassay Kit	700-61	\$295
Ab ^{MAX} Rabbit IgG Capture Immunoassay Kit	700-71	\$295
Ab ^{MAX} Human IgG Capture Immunoassay Kit	700-81	\$295
Ab ^{MAX} Chick IgY Capture Immunoassay Kit	700-91	\$295
Ab ^{MAX} Human G-CSF ELISA Kit	700-101	\$399
Ab ^{MAX} Quantitative Protein Phosphorylation	700-111	\$399
Ab ^{MAX} Human NGF ImmunoAssay kit	700-121	\$399
Ab ^{MAX} Human Factor VIII ELISA Kit	700-131	\$399

Liposome Reagents

AbboMax offers various preformed liposome reagents with a large number of common lipid compositions to support the needs of research organizations involved in liposome drug delivery. Our high quality preformed liposomes are prepared by experienced formulators using the highest quality lipids only from premier suppliers. Our products are easy to use to save you time, cost and improve the productivity and reliability of your research. You can trust our products for batch-to-batch consistency and reproducibility. All products are sterile filtered and properly packaged in vials to ensure long-term stability when stored refrigerated.

Plain Non-PEG Liposomes								
Non-PEG Liposomes: composed of a bilayer-forming phospholipid with/without cholesterol								
Hydration buffer: 20mM HEPES, 10% sucrose, pH 7.0								
External buffer: 20mM HEPES, 10% sucrose, pH 7.0								
Contain 5-10% ethanol which can be easily removed by dialysis if necessary								
Catalog Number	Description	Lipid Composition	Internal buffer	External buffer	Lipid Concentration (mM)	Mean Particle Size (nm)	Volume (mL)	Unit Price (US\$)
10101-0010	Preformed DMPC 100nm plain liposomes	DMPC/CHOL (50/45 mol/mol)	20mMHEPES, 10% sucrose, pH = 7	20mMHEPES, 10% sucrose, pH = 7	80	100 ± 10	10	\$199.00
10101-0100	Preformed DMPC 100nm plain liposomes	DMPC/CHOL (50/45 mol/mol)	20mMHEPES, 10% sucrose, pH = 7	20mMHEPES, 10% sucrose, pH = 7	80	100 ± 10	100	\$995.00
10102-0010	Preformed DPPC 100nm plain liposomes	DPPC/CHOL (50/45 mol/mol)	20mMHEPES, 10% sucrose, pH = 7	20mMHEPES, 10% sucrose, pH = 7	80	100 ± 10	10	\$209.00
10102-0100	Preformed DPPC 100nm plain liposomes	DPPC/CHOL (50/45 mol/mol)	20mMHEPES, 10% sucrose, pH = 7	20mMHEPES, 10% sucrose, pH = 7	80	100 ± 10	100	\$1,045.00
10103-0010	Preformed DSPC 100nm plain liposomes	DSPC/CHOL (50/45 mol/mol)	20mMHEPES, 10% sucrose, pH = 7	20mMHEPES, 10% sucrose, pH = 7	80	100 ± 10	10	\$214.00
10103-0100	Preformed DSPC 100nm plain liposomes	DSPC/CHOL (50/45 mol/mol)	20mMHEPES, 10% sucrose, pH = 7	20mMHEPES, 10% sucrose, pH = 7	80	100 ± 10	100	\$1,070.00
10104-0010	Preformed 100nm liposome with 33% CHOL	DSPC/CHOL (67/33 mol/mol)	20mMHEPES, 10% sucrose, pH = 7	20mMHEPES, 10% sucrose, pH = 7	80	100 ± 10	10	\$217.00
10104-0100	Preformed 100nm liposome with 33% CHOL	DSPC/CHOL (67/33 mol/mol)	20mMHEPES, 10% sucrose, pH = 7	20mMHEPES, 10% sucrose, pH = 7	80	100 ± 10	100	\$1,085.00
10104S-0010	Preformed 80nm liposome with 33% CHOL	DSPC/CHOL (67/33 mol/mol)	20mMHEPES, 10% sucrose, pH = 7	20mMHEPES, 10% sucrose, pH = 7	80	80 ± 10	10	\$236.00
10104S-0100	Preformed 80nm liposome with 33% CHOL	DSPC/CHOL (67/33 mol/mol)	20mMHEPES, 10% sucrose, pH = 7	20mMHEPES, 10% sucrose, pH = 7	80	80 ± 10	100	\$1,180.00
10105-0010	Preformed 100nm HSPC plain liposomes with 45 mol% CHOL	HSPC/CHOL (50/45 mol/mol)	20mMHEPES, 10% sucrose, pH = 7	20mMHEPES, 10% sucrose, pH = 7	80	100 ± 10	10	\$198.00
10105-0100	Preformed 100nm HSPC plain liposomes with 45 mol% CHOL	HSPC/CHOL (50/45 mol/mol)	20mMHEPES, 10% sucrose, pH = 7	20mMHEPES, 10% sucrose, pH = 7	80	100 ± 10	100	\$990.00
10106-0010	Preformed EPC plain liposomes with 45 mol% CHOL	EPC/CHOL(50/45 mol/mol)	20mMHEPES, 10% sucrose, pH = 7	20mMHEPES, 10% sucrose, pH = 7	80	100 ± 10	10	\$195.00
10106-0100	Preformed EPC plain liposomes with 45 mol% CHOL	EPC/CHOL(50/45 mol/mol)	20mMHEPES, 10% sucrose, pH = 7	20mMHEPES, 10% sucrose, pH = 7	80	100 ± 10	100	\$975.00
10107-0010	Preformed EPC plain liposomes with 33 mol% CHOL	EPC/CHOL(67/33 mol/mol)	20mMHEPES, 10% sucrose, pH = 7	20mMHEPES, 10% sucrose, pH = 7	80	80 ± 10	10	\$229.00
10107-0100	Preformed EPC plain liposomes with 33 mol% CHOL	EPC/CHOL(67/33 mol/mol)	20mMHEPES, 10% sucrose, pH = 7	20mMHEPES, 10% sucrose, pH = 7	80	80 ± 10	100	\$1,145.00
10108-0010	Preformed DOPC plain liposomes	DOPC	20mMHEPES, 10% sucrose, pH = 7	20mMHEPES, 10% sucrose, pH = 7	80	110 ± 20	10	\$209.00
10108-0100	Preformed DOPC plain liposomes	DOPC	20mMHEPES, 10% sucrose, pH = 7	20mMHEPES, 10% sucrose, pH = 7	80	110 ± 20	100	\$1,045.00
10109-0010	Preformed POPC plain liposomes	POPC	20mMHEPES, 10% sucrose, pH = 7	20mMHEPES, 10% sucrose, pH = 7	80	110 ± 20	10	\$178.00
10109-0100	Preformed POPC plain liposomes	POPC	20mMHEPES, 10% sucrose, pH = 7	20mMHEPES, 10% sucrose, pH = 7	80	110 ± 20	100	\$890.00

Plain PEGylated Liposomes								
Plan liposomes composed of a bilayer-forming phospholipid and mPEG-DSPE with or without cholesterol Hydration buffer: 20mM HEPES, 10% sucrose, pH 7.0 External buffer: 20mM HEPES, 10% sucrose, pH 7.0 Contain 5-10% ethanol which can be easily removed by dialysis if necessary								
Catalog Number	Description	Lipid Composition	Internal buffer	External buffer	Lipid Concentration (mM)	Mean Particle size (nm)	Volume (mL)	Unit Price (US\$)
10201-0010	Preformed DMPC 100nm plain PEGylated liposomes	DMPC/CHOL/mPEG2000-DSPE (50/45/5 mol/mol)	20mMHEPES, 10% sucrose, pH = 7	20mMHEPES, 10% sucrose, pH = 7	80	100 ± 10	10	\$263.00
10201-0100	Preformed DMPC 100nm plain PEGylated liposomes	DMPC/CHOL/mPEG2000-DSPE (50/45/5 mol/mol)	20mMHEPES, 10% sucrose, pH = 7	20mMHEPES, 10% sucrose, pH = 7	80	100 ± 10	100	\$1,315.00
10202-0010	Preformed DPPC 100nm plain PEGylated liposomes	DPPC/CHOL/mPEG2000-DSPE (50/45/5 mol/mol)	20mMHEPES, 10% sucrose, pH = 7	20mMHEPES, 10% sucrose, pH = 7	80	100 ± 10	10	\$275.00
10202-0100	Preformed DPPC 100nm plain PEGylated liposomes	DPPC/CHOL/mPEG2000-DSPE (50/45/5 mol/mol)	20mMHEPES, 10% sucrose, pH = 7	20mMHEPES, 10% sucrose, pH = 7	80	100 ± 10	100	\$1,375.00
10203-0010	Preformed DSPC 100nm plain PEGylated liposomes	DSPC/CHOL/mPEG2000-DSPE (50/45/5 mol/mol)	20mMHEPES, 10% sucrose, pH = 7	20mMHEPES, 10% sucrose, pH = 7	80	100 ± 10	10	\$279.00
10203-0100	Preformed DSPC 100nm plain PEGylated liposomes	DSPC/CHOL/mPEG2000-DSPE (50/45/5 mol/mol)	20mMHEPES, 10% sucrose, pH = 7	20mMHEPES, 10% sucrose, pH = 7	80	100 ± 10	100	\$1,395.00
10204-0010	Preformed HSPC 100nm plain PEGylated liposomes	HSPC/CHOL/mPEG2000-DSPE (50/45/5 mol/mol)	20mMHEPES, 10% sucrose, pH = 7	20mMHEPES, 10% sucrose, pH = 7	80	100 ± 10	10	\$279.00
10204-0100	Preformed HSPC 100nm plain PEGylated liposomes	HSPC/CHOL/mPEG2000-DSPE (50/45/5 mol/mol)	20mMHEPES, 10% sucrose, pH = 7	20mMHEPES, 10% sucrose, pH = 7	80	100 ± 10	100	\$1,395.00
10205-0010	Preformed 100nm PEGylated liposomes with long chain 20:0PC	20:0PC/CHOL/mPEG2000-DSPE (50/45/5 mol/mol)	20mMHEPES, 10% sucrose, pH = 7	20mMHEPES, 10% sucrose, pH = 7	80	120 ± 10	10	\$294.00
10205-0100	Preformed 100nm PEGylated liposomes with long chain 20:0PC	20:0PC/CHOL/mPEG2000-DSPE (50/45/5 mol/mol)	20mMHEPES, 10% sucrose, pH = 7	20mMHEPES, 10% sucrose, pH = 7	80	120 ± 10	100	\$1,470.00
10206-0010	Preformed 100nm PEGylated liposomes with long chain 22:0PC	22:0PC/CHOL/mPEG2000-DSPE (50/45/5 mol/mol)	20mMHEPES, 10% sucrose, pH = 7	20mMHEPES, 10% sucrose, pH = 7	60	120 ± 10	10	\$309.00
10206-0100	Preformed 100nm PEGylated liposomes with long chain 22:0PC	22:0PC/CHOL/mPEG2000-DSPE (50/45/5 mol/mol)	20mMHEPES, 10% sucrose, pH = 7	20mMHEPES, 10% sucrose, pH = 7	60	120 ± 10	100	\$1,545.00
10207-0010	Preformed 100nm PEGylated liposomes with long chain 24:0PC	24:0PC/CHOL/mPEG2000-DSPE (50/45/5 mol/mol)	20mMHEPES, 10% sucrose, pH = 7	20mMHEPES, 10% sucrose, pH = 7	60	140 ± 10	10	\$329.00
10207-0100	Preformed 100nm PEGylated liposomes with long chain 24:0PC	24:0PC/CHOL/mPEG2000-DSPE (50/45/5 mol/mol)	20mMHEPES, 10% sucrose, pH = 7	20mMHEPES, 10% sucrose, pH = 7	60	120 ± 15	100	\$1,645.00
10208-0010	Preformed 100nm PEGylated liposomes with PHSPC	PHSPC/CHOL/mPEG2000-DSPE (50/45/5 mol/mol)	20mMHEPES, 10% sucrose, pH = 7	20mMHEPES, 10% sucrose, pH = 7	80	110 ± 20	10	\$266.00
10208-0100	Preformed 100nm PEGylated liposomes with PHSPC	PHSPC/CHOL/mPEG2000-DSPE (50/45/5 mol/mol)	20mMHEPES, 10% sucrose, pH = 7	20mMHEPES, 10% sucrose, pH = 7	80	110 ± 20	100	\$1,330.00
10209-0010	Preformed PEGylated DOPC liposomes	DOPC/mPEG2000-DSPE (98:2 mol/mol)	20mMHEPES, 10% sucrose, pH = 7	20mMHEPES, 10% sucrose, pH = 7	80	110 ± 20	10	\$256.00
10209-0100	Preformed PEGylated DOPC liposomes	DOPC/mPEG2000-DSPE (98:2 mol/mol)	20mMHEPES, 10% sucrose, pH = 7	20mMHEPES, 10% sucrose, pH = 7	80	110 ± 20	100	\$1,280.00
10209-0010	Preformed PEGylated POPC liposomes	POPC/mPEG2000-DSPE (98:2 mol/mol)	20mMHEPES, 10% sucrose, pH = 7	20mMHEPES, 10% sucrose, pH = 7	80	110 ± 20	10	\$218.00
10209-0100	Preformed PEGylated POPC liposomes	POPC/mPEG2000-DSPE (98:2 mol/mol)	20mMHEPES, 10% sucrose, pH = 7	20mMHEPES, 10% sucrose, pH = 7	80	110 ± 20	100	\$1,090.00

Liposomes with Ammonium Sulfate								
Liposomes with transmembrane ammonium gradient are useful for actively loading weakly basic compounds. These products are shipped to users with the external ammonium sulfate unexchanged, which is the preferred by most researchers, since it gives them the opportunity to control the establishment of the ammonium gradient. The ammonium gradient could be easily established by dialysis or diafiltration against a desired buffer solution with a higher pH (typically pH 5-7).								
Catalog Number	Description	Lipid Composition	Internal buffer	External buffer	Lipid Concentration (mM)	Mean Particle size (nm)	Volume (mL)	Unit Price (US\$)
20201AS-0010	prefomed DPPC liposomes with transmembrane ammonium gradient ready for loading weak base	DPPC/CHOL/mPEG2000-DSPE (50/45/5 mol/mol)	Ammonium Sulfate (250 mM)	Ammonium Sulfate (250 mM)	80	100 ± 10	10	\$299.00
20201AS-0100	prefomed DPPC liposomes with transmembrane ammonium gradient ready for loading weak base	DPPC/CHOL/mPEG2000-DSPE (50/45/5 mol/mol)	Ammonium Sulfate (250 mM)	Ammonium Sulfate (250 mM)	80	100 ± 10	100	\$1,495.00
20202AS-0010	prefomed DSPC liposomes with transmembrane ammonium gradient ready for loading weak base	DSPC/CHOL/mPEG2000-DSPE (50/45/5 mol/mol)	Ammonium Sulfate (250 mM)	Ammonium Sulfate (250 mM)	80	100 ± 10	10	\$299.00
20202AS-0100	prefomed DSPC liposomes with transmembrane ammonium gradient ready for loading weak base	DSPC/CHOL/mPEG2000-DSPE (50/45/5 mol/mol)	Ammonium Sulfate (250 mM)	Ammonium Sulfate (250 mM)	80	100 ± 10	100	\$1,495.00
20203AS-0010	prefomed HSPC liposomes with transmembrane ammonium gradient ready for loading weak base	HSPC/CHOL/mPEG2000-DSPE (50/45/5 mol/mol)	Ammonium Sulfate (250 mM)	Ammonium Sulfate (250 mM)	80	100 ± 10	10	\$299.00
20203AS-0100	prefomed HSPC liposomes with transmembrane ammonium gradient ready for loading weak base	HSPC/CHOL/mPEG2000-DSPE (50/45/5 mol/mol)	Ammonium Sulfate (250 mM)	Ammonium Sulfate (250 mM)	80	100 ± 10	100	\$1,495.00
20204AS-0010	Long chain PC liposomes with transmembrane ammonium gradient ready for loading weak base	20:0PC/mPEG2000-DSPE (95/5 mol/mol)	Ammonium Sulfate (250 mM)	Ammonium Sulfate (250 mM)	80	100 ± 10	10	\$336.00
20204AS-0100	Long chain PC liposomes with transmembrane ammonium gradient ready for loading weak base	20:0PC/mPEG2000-DSPE (95/5 mol/mol)	Ammonium Sulfate (250 mM)	Ammonium Sulfate (250 mM)	80	100 ± 10	100	\$1,680.00
20205AS-0010	Long chain PC liposomes with transmembrane ammonium gradient ready for loading weak base	22:0PC/mPEG2000-DSPE (95/5 mol/mol)	Ammonium Sulfate (250 mM)	Ammonium Sulfate (250 mM)	80	100 ± 10	10	\$349.00
20205AS-0100	Long chain PC liposomes with transmembrane ammonium gradient ready for loading weak base	22:0PC/mPEG2000-DSPE (95/5 mol/mol)	Ammonium Sulfate (250 mM)	Ammonium Sulfate (250 mM)	80	100 ± 10	100	\$1,745.00
20206AS-0010	prefomed LUV ready for loading weak base	HSPC/CHOL/mPEG2000-DSPE (56.2/38.5/5.3 mol/mol)	Ammonium Sulfate (250 mM)	Ammonium Sulfate (250 mM)	80	100 ± 10	10	\$282.00
20206AS-0100	prefomed LUV ready for loading weak base	HSPC/CHOL/mPEG2000-DSPE (56.2/38.5/5.3 mol/mol)	Ammonium Sulfate (250 mM)	Ammonium Sulfate (250 mM)	80	100 ± 10	100	\$1,410.00
20207AS-0010	prefomed LUV ready for loading weak base	PHSPC/CHOL/mPEG2000-DSPE (56/45/5 mol/mol)	Ammonium Sulfate (250 mM)	Ammonium Sulfate (250 mM)	80	100 ± 10	10	\$266.00
20207AS-0100	prefomed LUV ready for loading weak base	PHSPC/CHOL/mPEG2000-DSPE (56/45/5 mol/mol)	Ammonium Sulfate (250 mM)	Ammonium Sulfate (250 mM)	80	100 ± 10	100	\$1,330.00
20208AS-0010	Long chain PC liposomes with transmembrane	24:0PC/CHOL/mPEG2000-DSPE (50/45/5 mol/mol)	Ammonium Sulfate (250 mM)	Ammonium Sulfate (250 mM)	60	120 ± 15	10	\$349.00
20208AS-0100	Long chain PC liposomes with transmembrane	24:0PC/CHOL/mPEG2000-DSPE (50/45/5 mol/mol)	Ammonium Sulfate (250 mM)	Ammonium Sulfate (250 mM)	60	120 ± 15	100	\$1,745.00

Transfection Reagents: Cationic Liposomes

Preformed cationic liposomes are prepared by sonication. They are ready to use for preparing nucleic acid complexes. Please do not hesitate to contact us if you would like to order specific types of cationic liposomes that is not shown in the catalog.

Lipid Concentration: 10 mM
Liposomes are prepared in Milli-Q water

Catalog No	Description	Lipid Composition	Internal buffer	External buffer	Lipid Concentration (mM)	Mean Particle size (nm)	Volume (mL)	Unit Price (US\$)
50101-0001	Cationic liposomes for lipoplex	DMTAP/DOPE (50/50 mol/mol)	H ₂ O	H ₂ O	10	100 ± 10	1	\$83.00
50101-0005	Cationic liposomes for lipoplex	DMTAP/DOPE (50/50 mol/mol)	H ₂ O	H ₂ O	10	100 ± 10	5	\$309.00
50101-0010	Cationic liposomes for lipoplex	DMTAP/DOPE (50/50 mol/mol)	H ₂ O	H ₂ O	10	100 ± 10	10	\$519.00
50102-0001	Cationic liposomes for lipoplex	DOTAP/DOPE ((50/50 mol/mol)	H ₂ O	H ₂ O	10	100 ± 10	1	\$84.00
50102-0005	Cationic liposomes for lipoplex	DOTAP/DOPE ((50/50 mol/mol)	H ₂ O	H ₂ O	10	100 ± 10	5	\$314.00
50102-0010	Cationic liposomes for lipoplex	DOTAP/DOPE ((50/50 mol/mol)	H ₂ O	H ₂ O	10	100 ± 10	10	\$523.00
50103-0001	Cationic liposomes for lipoplex	DDAB/DOPE (50/50 mol/mol)	H ₂ O	H ₂ O	10	100 ± 10	1	\$81.00
50103-0005	Cationic liposomes for lipoplex	DDAB/DOPE (50/50 mol/mol)	H ₂ O	H ₂ O	10	100 ± 10	5	\$304.00
50103-0010	Cationic liposomes for lipoplex	DDAB/DOPE (50/50 mol/mol)	H ₂ O	H ₂ O	10	100 ± 10	10	\$509.00
50104-0001	Cationic liposomes for lipoplex	DODAP/DOPE (50/50 mol/mol)	H ₂ O	H ₂ O	10	100 ± 10	1	\$83.00
50104-0005	Cationic liposomes for lipoplex	DODAP/DOPE (50/50 mol/mol)	H ₂ O	H ₂ O	10	100 ± 10	5	\$312.00
50104-0010	Cationic liposomes for lipoplex	DODAP/DOPE (50/50 mol/mol)	H ₂ O	H ₂ O	10	100 ± 10	10	\$519.00
50105-0001	Cationic liposomes for lipoplex	DC-CHOL/DOPE (50/50 mol/mol)	H ₂ O	H ₂ O	10	100 ± 10	1	\$84.00
50105-0005	Cationic liposomes for lipoplex	DC-CHOL/DOPE (50/50 mol/mol)	H ₂ O	H ₂ O	10	100 ± 10	5	\$314.00
50105-0010	Cationic liposomes for lipoplex	DC-CHOL/DOPE (50/50 mol/mol)	H ₂ O	H ₂ O	10	100 ± 10	10	\$519.00

AbboMax, Inc

1161 Ringwood Ct, Suite 100
San Jose, California, 95131. USA
Tel: 408-321-9898
Toll Free: 1-866-628-9898 (USA)
Fax: 408-321-9896
Email: info@abbomax.com
Website: www.abbomax.com

Order information

Please place order by phone, fax, email or website

