



Polyclonal antibody production  
Monoclonal antibody production  
Phosphospecific antibody production  
Antibody purification and labeling  
Custom assay development  
Recombinant protein expression  
Peptide synthesis and conjugation  
Catalogue antibodies and reagents

**AbboMax, Inc**

1-866-628-9898. [info@abbomax.com](mailto:info@abbomax.com). [www.abbomax.com](http://www.abbomax.com)

**1. Custom Services.....Page 1-5**

**Custom antibody services:**

❖ Ab <sup>MAX</sup>	Polyclonal peptide-antibody package	60001
❖ Ab <sup>MAX</sup>	Polyclonal protein-antibody production	60002
❖ Ab <sup>MAX</sup>	Monoclonal antibody package	60003
❖ Ab <sup>MAX</sup>	Peptide carrier protein conjugation	60004
❖ Ab <sup>MAX</sup>	Polyclonal phosphospecific/paired antibody package	60008
❖ Ab <sup>MAX</sup>	Monoclonal phosphospecific/paired antibody package	60009
❖ Ab <sup>MAX</sup>	Antibody purification	60005
○ Ab <sup>MAX</sup>	Epitope-affinity purification	60005PC
○ Ab <sup>MAX</sup>	Protein A purification	60005PA
○ Ab <sup>MAX</sup>	MAP peptide purification	60005MA
❖ Ab <sup>MAX</sup>	Antibody Fab Fragmentation	60011ab1
❖ Ab <sup>MAX</sup>	Antibody F(ab)2 Fragmentation	60012ab2
❖ Ab <sup>MAX</sup>	Large-scale antibody production in vivo	60013
❖ Ab <sup>MAX</sup>	Large-scale antibody production in vitro	60014

**Custom assay development services:**

❖ Asy <sup>MAX</sup>	Immunoassay development	60021
❖ Asy <sup>MAX</sup>	Bioassay development	60022
❖ Asy <sup>MAX</sup>	Kinase assay development	60023

**Custom recombinant protein service:**

❖ Rec <sup>MAX</sup>	Molecular cloning and screening	60031
❖ Rec <sup>MAX</sup>	Transfection and cell line selection	60032
❖ Rec <sup>MAX</sup>	Recombinant protein expression & purification	60033
❖ Rec <sup>MAX</sup>	Large-scale protein purification	60034

**Custom peptide synthesis**

❖ Pep <sup>MAX</sup>	Peptide synthesis	70001
----------------------	-------------------	-------

**2. Phosphospecific Antibodies..... P 5-7**

**3. Primary Antibodies..... P 8-19**

**4. Epitope-tag Antibodies..... P20**

**5. Secondary Antibodies ..... P20**

**6. Antibody Reagents ..... P21**

**7. Assay Kits ..... P21**

## Custom Antibody Services

### Ab<sup>Max</sup> polyclonal peptide-antibody package (Cat# 60001)

AbboMax provides regular polyclonal antibody package, the host can be any of the following animals at your choice – rabbits, chicken, mice and other animals. This package includes the following items:

- ❖ Consultation of epitope selection in terms of antigenicity index, hydrophilicity and secondary structure
- ❖ 10-19 mg of peptide (80% checked by HPLC, up to 15 mer); BSA/KLH conjugation
- ❖ 2 rabbits (or other animals) with AbboMax immunization protocol
- ❖ Pre-immune serum (2-5 ml/rabbit); 4 s.c. immunizations; 2 bleeds with total 100 ml of serum
- ❖ ELISA titration for all bleeds. Western blot (Optional); Dot blot (Optional)

Data will be provided with the project:

- ❖ Peptide: HPLC and Mass Spec
- ❖ KLH/BSA Conjugation datasheet
- ❖ ELISA titration for all antisera

### Ab<sup>Max</sup> polyclonal protein-antibody Package (Cat# 60002)

\*Customers will provide immunogen(s) for immunization

The package includes the following items:

- ❖ 2 rabbits with AbboMax immunization protocol
- ❖ Pre-immune serum (2-5 ml/rabbit); Antiserum 100 ml
- ❖ ELISA titration for all bleeds
- ❖ Western blot (Optional); Dot blot (Optional)



### Ab<sup>Max</sup> monoclonal antibody package (Cat# 60003)

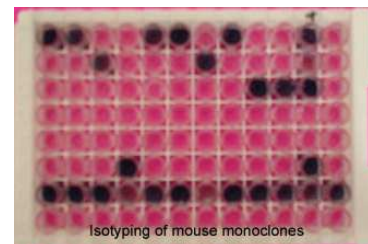
Deliver in 3 months; Confidentiality is assured by AbboMax, Inc.

The package includes the following items:

- ❖ 5 mice with AbboMax standard immunization protocol,
- ❖ Phase 1—Pre-immune serum and antiserum (1 ml @ 1:100 dilution) with ELISA titration.
- ❖ Phase 2—Cell fusion and parental clone screening
- ❖ Phase 3—Subcloning and cryogenic vialing
- ❖ Phase 4—Large-scale monoclonal antibody production for a selected monoclonal
- ❖ Phase 5 (Optional)—Protein A purification according to the monoclonal isotype

Data will be provided with the project:

- ❖ Peptide: HPLC and Mass Spec if peptide is required
- ❖ KLH/BSA Conjugation datasheet
- ❖ ELISA titration for antisera, ELISA screening for all the clones
- ❖ Isotyping for the monoclonal



## Ab<sup>Max</sup> peptide carrier protein conjugation (Cat# 60004)

The peptide sequence information should be available for protein chemistry determination.

### Data will be provided with the project:

- ❖ KLH/BSA/GGG/THY/PPD (a selected carrier protein) conjugation datasheet
- ❖ Conjugation efficiency determination (optional)—the molar ratio of peptide/carrier protein, SDS-PAGE verification

## Ab<sup>Max</sup> polyclonal phosphospecific/paired antibody package (Cat# 60008)

- ❖ Consultation of phosphospecific site prediction and epitope selection
- ❖ 10-20 mg of phosphospecific and non-phospho peptides (80% checked by HPLC, up to 15 mer)
- ❖ BSA/KLH conjugation
- ❖ 2 rabbits with AbboMax immunization protocol for site-modification antigen
- ❖ Pre-immune serum (2-5 ml/rabbit); 4 s.c. immunizations; 2 bleeds with total 100 ml of serum
- ❖ ELISA analysis for all bleeds and antibodies
- ❖ Affinity purification for phosphospecific and paired antibody production
- ❖ Dot blot to confirm the purified antibodies



## Ab<sup>Max</sup> monoclonal phosphospecific/paired antibody package (Cat# 60009)

**Deliver in 3.5 months; Confidentiality is assured by AbboMax, Inc.**

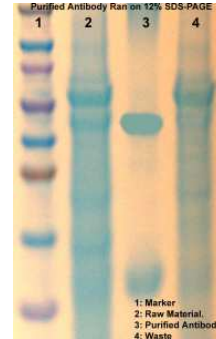
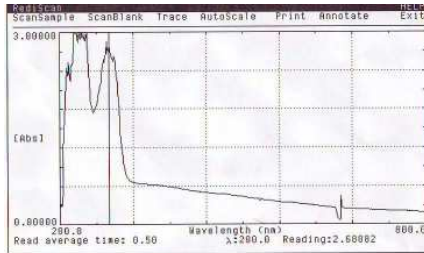
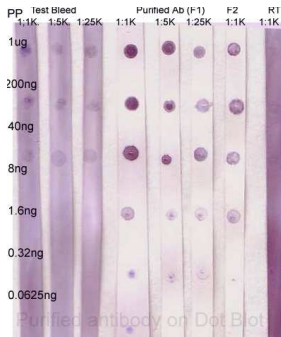
- ❖ Phase 1—Project initiation, mice immunization and titration
  - Consultation of epitope selection and modification
  - Phosphospecific peptide and non-phosphospecific peptide synthesis, purification, conjugation
  - 5 mice with AbboMax standard immunization protocol
  - Pre-immune serum and antiserum (1 ml @ 1:100 dilution) with ELISA titration
- ❖ Phase 2—Fusion and parental clone screening
  - Three population of parental clones will be selected according to ELISA
  - Phosphospecific clones will be guaranteed among these three population clones
- ❖ Phase 3—Subcloning
  - Limit dilution on parental clones confirmed by customer's selection
  - Isotyping for all the subclones
- ❖ Phase 4—Large-scale antibody production for a specific monoclonal
  - 50 ml ascites, ELISA confirmation, protein concentration and isotyping
- ❖ Phase 5 (Optional)—Protein A purification according to the monoclonal isotype

## Ab<sup>Max</sup> antibody affinity purification (Cat# 60005)

We provide the following purification according to customer requirements

- ❖ Peptide epitope affinity purification
- ❖ Protein A/G affinity purification
- ❖ MAP system affinity purification
- ❖ All the purified antibody will be verified by antigen (protein/peptide) specific ELISA
- ❖ Antibody enrichment and recovery efficiency

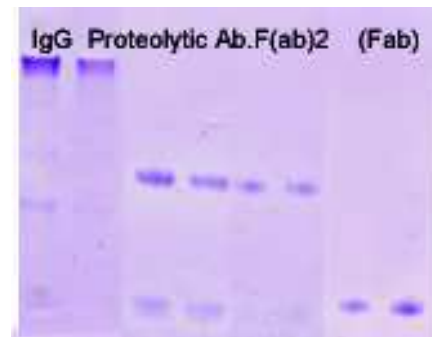
Samples O.D	Prebleed		Test Bleed		AP Antibody F1		AP Antibody F2		Running Through Waste		Protein A Purified Antibody	
	Test 1	Test 2	Test 1	Test 2	Test 1	Test 2	Test 1	Test 2	Test 1	Test 2	F1	F2
1:1K	0.309	0.312	1.596	1.609	1.908	1.919	1.08	1.075	0.659	0.667	1.114	1.124
1:5K	0.168	0.166	0.963	0.962	1.228	1.198	0.165	0.169	0.11	0.107	0.613	0.617
1:25k	0.061	0.06	0.274	0.277	0.687	0.685	0.069	0.066	0.084	0.077	0.177	0.167
1:125K	0.06	0.06	0.062	0.063	0.302	0.307	0.062	0.062	0.063	0.068	0.065	0.063
1:625K	0.06	0.058	0.059	0.059	0.106	0.104	0.061	0.064	0.074	0.065	0.066	0.06
1:3125K	0.057	0.06	0.059	0.06	0.061	0.063	0.061	0.06	0.063	0.066	0.063	0.062
1:15625K	0.058	0.06	0.061	0.058	0.062	0.067	0.064	0.068	0.067	0.062	0.061	0.064
1XPBS	0.056	0.059	0.059	0.058	0.064	0.065	0.064	0.064	0.062	0.065	0.069	0.063



## Ab<sup>Max</sup> antibody Fab fragmentation (Cat# 60011ab1) Ab<sup>Max</sup> antibody F(ab)2 fragmentation (Cat# 60012ab2)

To void antigen capping and internalization, antibody fragmentation is usually employed. In the antibody proteolytic fragmentation service, we provide the following items:

- ❖ The outline of antibody fragmentation process
- ❖ Antibody concentration and purity
- ❖ Results confirmed on electrophoresis.



**Ab<sup>Max</sup> large-scale antibody production in vivo (Cat# 60013)**  
**Ab<sup>Max</sup> large-scale antibody production in vitro (Cat# 60014)**

Monoclonal antibodies can be produced in vitro or in vivo. AbboMax provides small or large scaled antibody production at your request.

- ❖ Cell line maintenance and expanding
- ❖ Antibody collection and treatment
- ❖ Protein concentration and ELISA validation.

## Custom Assay Development Service

**Asy<sup>Max</sup> immunoassay development (Cat# 60021)**  
**Asy<sup>Max</sup> Bioassay development (Cat# 60022)**  
**Asy<sup>Max</sup> Kinase activity assay development (Cat# 60023)**

The scientists with AbboMax have been involving in immunology and cell biology research and product development for more than 15 years. With the state-of-art technology, we can help you to co-develop immunoassays, bioassays related to immunology, kinase activity assay with Phosphorylated protein measurement for your specific needs.

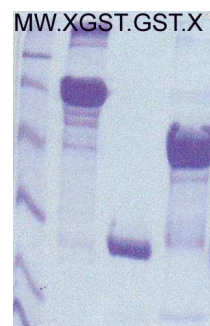
- ❖ Consultation of assay format selection
- ❖ Co-develop assays and finalize the parameters.
- ❖ Protocol writing, material and assay transferring.

## Custom Recombinant Protein Service

<b>Rec<sup>MAX</sup> molecular cloning and screening</b>	<b>60031</b>
<b>Rec<sup>MAX</sup> transfection and cell line selection</b>	<b>60032</b>
<b>Rec<sup>MAX</sup> recombinant protein expression &amp; purification</b>	<b>60033</b>
<b>Rec<sup>MAX</sup> Large-scale protein purification</b>	<b>60034</b>

Molecular cloning and protein over-expression is an effective tool in preparing protein-antigens when the information of a cloned gene is available. The other advantage of using the recombinant protein is to recognize an effective affinity epitope involved in drug discovery. Dedicated scientists at AbboMax are willing to assist you to achieve your goal.

- ❖ Primer design and expression system selection
- ❖ Molecular cloning and cell line selection
- ❖ Mini-prep of selected clones
- ❖ Large-scale protein over-expression
- ❖ Protein purity and concentration checking, SDS-PAGE confirmation
- ❖ Western blot (optional)



## Custom Peptide Synthesis (Cat#70001)

**Peptide synthesis**—In conjunction with Elim Biopharmaceuticals ([www.Elimbiopharm.com](http://www.Elimbiopharm.com)), we offer high quality, fast-turn-around custom peptide synthesis:

- ❖ Fmoc solid phase peptide synthesis, purified by reversed-phase HPLC
- ❖ D-amino acid synthesis, MAP synthesis
- ❖ Overnight synthesis of 10 mer or less high-quality crude peptides
- ❖ Cyclization—disulfide bond 1, 2, and 3; amide cyclization
- ❖ Fastest turn-around-time (TAT) in the industry
- ❖ Phosphorylation, methylation, acetylating
- ❖ Friendly and professional customer support
- ❖ Peptide fluorescence/dye labeling: biotin
- ❖ FITC/5-FAM, MCA, EDANS/DABCYL.

**Free consultation services**---We also offer free consultation services of epitope selection and phosphosphorylated Serine/Threonine, Tyrosin prediction.

**Contact for Quote**--- Inquire by email at [info@abbomax.com](mailto:info@abbomax.com) or by phone at 1.866.628.9898

## Phosphospecific Antibodies

Protein phosphorylation is an important event in cell signaling. AbboMax provides you high quality phosphospecific antibodies related to various cellular signal transduction pathways.

Description	Cat#	2006Price	Size	Host	Applications	Species Reactivity
AKT1/PKB $\alpha$ (pS473)	600-220	\$220	0.2 ml	Rabbit	WB, ELISA, IP	Hu, Ms, Rt
AKT1/PKB $\alpha$ (pS473)	601-050	\$235	0.2 ml	Mouse	WB, ELISA, IP	Hu, Ms, Rt
AKT1/PKB $\alpha$ (pT34)	600-210	\$220	0.2 ml	Rabbit	WB, ELISA, IP	Hu, Ms, Rt
AMPK(pS79)	600-250	\$230	0.2 ml	Rabbit	WB, ELISA, IP	Hu
AMPK-alpha(pT172)	620-120	\$320	0.2 ml	Rabbit	WB, ELISA, IP	Hu
BAD(pS137)	601-190	\$255	0.2 ml	Mouse	IHC, ELISA	Hu, Ms, Rt
$\beta$ -Catenin (pS675)	500-8864	\$255	0.2 ml	Rabbit	WB, IP	Hu, Ms, Rt
BCL-2 (pTyr129)	500-8874	\$245	0.2 ml	Rabbit	WB, IP	Hu, Ms, Rt
BCL-2(pS70)	500-11574	\$250	0.2 ml	Rabbit	IHC, ELISA	Hu, Ms
BCL-2(pT56)	500-11584	\$255	0.2 ml	Rabbit	IHC, ELISA	Hu, Ms
BCL-XL(pS62)	500-11594	\$245	0.2 ml	Rabbit	IHC, WB, ELISA, IP	Hu, Ms
BCAR3 (phospho)	600-080	\$330	0.2 ml	Rabbit	WB, IHC	Hu, Ms, Rt
CamKII(pT286)	600-270	\$230	0.2 ml	Rabbit	WB, ELISA, IP	Hu
CDC6(pS54)	601-080	\$225	0.2 ml	Mouse	WB, ELISA, IP	Hu, Ms, Rt
CDC25C(pS216)	601-180	\$240	0.2 ml	Mouse	WB, ELISA, IP	Hu
c-erbB2 (pY1221/Y1222)	500-11744	\$225	0.2 ml	Rabbit	IHC, ELISA	Hu, Ms
c-erbB2 (pY877)	500-11754	\$225	0.2 ml	Rabbit	IHC, ELISA	Hu, Ms
c-Jun (pT239)	500-11604	\$250	0.2 ml	Rabbit	IHC, WB, ELISA, IP	Hu, Ms
c-Jun(pS63)	600-390	\$220	0.2 ml	Mouse	WB, ELISA, IP	Hu, Ms, Rt
c-Myc (pS77)	601-120	\$230	0.2 ml	Mouse	WB, ELISA, IP	Hu, Ms, Rt
CREB(pS133)	600-280	\$230	0.2 ml	Rabbit	WB, ELISA, IP	Hu
EGFR(pY1173)	600-290	\$230	0.2 ml	Rabbit	WB, ELISA, IP	Hu
EGFR(pS1070)	500-11684	\$240	0.2 ml	Rabbit	IHC, ELISA	Hu, Ms
EGFR(pY1092)	500-12224	\$235	0.2 ml	Rabbit	IHC, ELISA	Hu, Ms, Rt

ELK-1(pS383)	500-12234	\$245	0.2 ml	Rabbit	IHC, IP ELISA	Hu, Ms, Rt
ELK1(pS389)	500-11694	\$255	0.2 ml	Rabbit	IHC, ELISA, IP	Hu, Ms
ELK1(pT417)	500-11704	\$250	0.2 ml	Rabbit	IHC, ELISA, IP	Hu, Ms
ER(pS118)	600-300	\$230	0.2 ml	Rabbit	WB, ELISA, IP	Hu
ER(pS167)	600-310	\$230	0.2 ml	Rabbit	WB, ELISA, IP	Hu
ER9pS305)	620-220	\$290	0.2 ml	Rabbit	IHC,ELISA	Hu, Ms
ER-beta(pS106)	601-140	\$245	0.2 ml	Mouse	IHC, ELISA	Hu, Ms, Rt
Estrogen Receptor (pS118)	500-12264	\$319	0.2 ml	Rabbit	IHC, WB, ELISA	Hu, Ms
Estrogen Receptor (pS167)	500-8924	\$319	0.2 ml	Rabbit	WB, IP	Hu
FAK(pY576)	600-320	\$230	0.2 ml	Rabbit	WB, ELISA, IP	Hu
GALBP(pS6)	601-160	\$245	0.2 ml	Mouse	WB, ELISA, IP	Hu, Cn, Bv
GATA1(pS142)	500-11714	\$290	0.2 ml	Rabbit	IHC, WB, ELISA, IP	Hu, Ms
GSK3a(pS21)	600-330	\$230	0.2 ml	Rabbit	WB, ELISA, IP	Hu, Ms, Rt
GSK3a(pS21)	601-200	\$250	0.2 ml	Mouse	WB, ELISA, IP	Hu, Ms, Rt
GSK3b(pS9)	600-340	\$230	0.2 ml	Rabbit	WB, ELISA, IP	Hu, Ms, Rt
GSK3b(pS9)	600-130	\$235	0.2 ml	Mouse	WB, ELISA, IP	Hu, Ms, Rt
GR(pS203)	601-110	\$235	0.2 ml	Mouse	WB, ELISA, IP	hu, Ms,
HSP27(pS78)	601-210	\$245	0.2 ml	Mouse	WB, ELISA, IP	Hu, Ms, Rt
IGF-1R (pY1161)	500-12304	\$290	0.2 ml	Rabbit	IHC, ELISA	Hu, Ms, Rt
IKK-alpha(pS176)	601-090	\$235	0.2 ml	Mouse	WB, IP	Hu, Ms, Rt
IRAK4(pT345)	600-560	\$230	0.2 ml	Mouse	WB, ELISA	Hu
IRS-1 (pS312),	500-8984	\$295	0.2 ml	Rabbit	WB, IP	Hu
IRS-2 (pS731)	500-9004	\$290	0.2 ml	Rabbit	WB, IP	Hu
IRS2(pS1001)	600-720	\$290	0.2 ml	Rabbit	WB, IP	Hu
JAK(pY1007/Y1008)	620-150	\$270	0.2 ml	Rabbit	WB, IP	Hu
JNK/SAPK1(pT183/pY185)	600-380	\$240	0.2 ml	Rabbit	WB, ELISA, IP	Hu
JunB (pS259)	500-11764	\$290	0.2 ml	Rabbit	IHC, WB, ELISA, IP	Hu, Ms
JunB (pS79)	500-11774	\$290	0.2 ml	Rabbit	IHC, ELISA, IP	Hu, Ms
JunD (pS255)	500-11784	\$295	0.2 ml	Rabbit	IHC, ELISA, IP	Hu, Ms
Keratin 18 (pS33)	500-7774	\$295	0.2 ml	Mouse	IP, IF	Hu,Ms
Keratin 8 (pS431)	500-5974	\$290	0.2 ml	Mouse	WB, IP, IHC-P, IF	Hu,Ms
L1CAM(pS1154)	601-070	\$245	0.2 ml	mouse	Wb, ELISA, IP	Hu, Ms, Rt
MBP(pT98)	620-200	\$290	0.2 ml	Rabbit	Wb, ELISA, IP	Hu, Ms, Rt
MEK1/2(pS218/S222)	620-190	\$290	0.2 ml	Rabbit	Wb, ELISA, IP	Hu, Ms, Rt
Myc(pT358)	500-11824	\$280	0.2 ml	Rabbit	IHC, ELISA, IP	Hu, Ms
Myc(pT58)	500-11834	\$250	0.2 ml	Rabbit	IHC, WB, ELISA, IP	Hu, Ms
NFκBp65 (pS276)	500-9064	\$285	0.2 ml	Rabbit	WB	Hu
NFκB-p100/p52(pS869)	500-11844	\$270	0.2 ml	Rabbit	IHC, WB, ELISA	Hu, Ms
NFκB-p65(pS468)	500-11854	\$280	0.2 ml	Rabbit	IHC, WB, ELISA	Hu, Ms
NFκB-p65(pT435)	500-11864	\$270	0.2 ml	Rabbit	IHC, WB, ELISA	Hu, Ms
NF-κB p100/p52(pS865)	500-11874	\$285	0.2 ml	Rabbit	IHC, WB, ELISA, IP	Hu, Ms
NF-κB p105/p50(pS337)	500-11884	\$285	0.2 ml	Rabbit	IHC, WB, ELISA	Hu, Ms
NF-κB p105/p50(pS893)	500-11894	\$280	0.2 ml	Rabbit	IHC, ELISA	Hu, Ms
NF-κB p105/p50(pS907)	500-11904	\$290	0.2 ml	Rabbit	IHC, WB, ELISA, IP	Hu, Ms
NF-κB p65(pS276)	500-11914	\$290	0.2 ml	Rabbit	IHC,ELISA, WB, IP	Hu, Ms
NF-κB p65(pS536)	500-11924	\$270	0.2 ml	Rabbit	IHC, ELISA, IP	Hu, Ms



NF-κB p65(pT254)	500-11934	\$250	0.2 ml	Rabbit	IHC, WB, ELISA, IP	Hu, Ms
Neurofibromin(pS2741)	620-240	\$290	0.2 ml	Rabbit	WB	Hu
P53(pS15)	600-550	\$220	0.2 ml	Rabbit	WB, ELISA	Hu, Ms, Rt
P53(pS15)	601-220	\$245	0.2 ml	Mouse	WB, ELISA	Hu, Ms, Rt
PKC (pS345)	500-9244	\$250	0.2 ml	Rabbit	WB, IP	Hu, Ms, Rt
pTEN(pS380)	601-170	\$215	0.2 ml	Mouse	WB, ELISA	Hu, Ms, Rt
PR (phospho)	500-5344	\$265	0.2 ml	Mouse	IHC-P, IP	Hu
Raf-1 (pS259)	500-12014	\$240	0.2 ml	Rabbit	IHC, ELISA	Hu, Ms
Rel (pS503)	500-12024	\$245	0.2 ml	Rabbit	IHC, ELISA	Hu, Ms
Retinoblastoma (pS608)	500-8244	\$295	0.2 ml	Mouse	WB	Hu, Ms
Rho-Kinase (pT396)	500-9284	\$250	0.2 ml	Rabbit	WB	Hu, Ms, Rt
S6K(pS434)	601-030	\$215	0.2 ml	Rabbit	WB	Hu, Ms, Rt
S6K(pS434)	601-040	\$195	0.2 ml	Mouse	WB	Hu, Ms, Rt
SHC/P66 (pS36)	601-150	\$215	0.2 ml	Mouse	WB	Hu
STAT1 (pY701)	620-160	\$250	0.2 ml	Rabbit	WB, IP	Hu, Ms, Rt
STAT3 (pS727)	500-12044	\$240	0.2 ml	Rabbit	IHC, WB, ELISA, IP	Hu, Ms
STAT3 (pY705)	500-12054	\$255	0.2 ml	Rabbit	IHC, ELISA, IP	Hu, Ms
STAT4(pY693)	500-12064	\$255	0.2 ml	Rabbit	IHC, ELISA, IP	Hu, Ms
STAT5 (pY694)	500-9334	\$255	0.2 ml	Rabbit	WB, IP	Hu, Ms, Rt
STAT5A (pS780)	500-12074	\$250	0.2 ml	Rabbit	IHC, WB, ELISA, IP	Hu, Ms
STAT5A (pY694)	500-12084	\$225	0.2 ml	Rabbit	IHC, WB, ELISA	Hu, Ms
STAT6 (pT645)	500-12094	\$245	0.2 ml	Rabbit	IHC, ELISA, IP	Hu, Ms
STAT6 (pY641)	500-12104	\$245	0.2 ml	Rabbit	IHC, ELISA	Hu, Ms
Tau (pS384)	600-060	\$219	0.2 ml	Mouse	WB, IP	Hu, Ms
VEGFR2(pY1214)	500-12324	\$255	0.2 ml	Rabbit	IHC, ELISA	Hu, Ms, Rt



## Primary Antibodies

Description	Cat#	2006Price	Size	Host	Applications	Species Reactivity
(Pro) Surfactant Protein B	500-4754	\$199	0.2 ml	Mouse	IHC-P, IF	Hu, Rt
14.3.3 gamma	500-6964	\$199	0.2 ml	Mouse	WB, IP	Hu
14.3.3 sigma	500-4764	\$199	0.2 ml	Mouse	WB, IP, IHC-P, IF	Hu, Rt
14.3.3, Pan	500-6974	\$199	0.2 ml	Mouse	WB, IP	Hu
14-3-3 beta	500-2924	\$189	0.2 ml	Rabbit	IHC(P), WB, IP	Hu, Ms, Rt
14-3-3 zeta	500-12604	\$189	0.2 ml	Rabbit	IHC-P, WB	Hu, Ms, Rt
15-Lox-1	600-580	\$219	0.2 ml	Rabbit	WB, ELISA	Hu
15-Lox-2	600-590	\$219	0.2 ml	Rabbit	WB, ELISA	Hu
5-HT	500-2154	\$179	0.2 ml	Mouse	IHC(P)	Hu
a-B-Crystallin	500-3764	\$199	0.2 ml	Rabbit	IHC(P), WB	Hu
Actin, Muscle Specific	500-4774	\$219	0.2 ml	Mouse	IHC-P, IF	Hu, Ms, Rt
Actin, Pan	500-4784	\$349	0.2 ml	Mouse	WB, IP, IHC-P	Hu, Ms, Rt
Actin, skeletal muscle	500-3884	\$199	0.2 ml	Rabbit	IHC(P)	Hu, Rt, Rb
Actin, Smooth Muscle	600-410	\$199	0.2 ml	Rabbit	IHC(P), WB	Hu, Ms, Rt
Actin, Smooth Muscle	500-6604	\$249	0.2 ml	Mouse	IHC-P, IF	Hu, Ms, Rt, Ck
Actin-beta	500-4554	\$339	0.2 ml	Rabbit	IHC(P)	Hu
Activin Receptor Type II	500-7004	\$379	0.2 ml	Mouse	WB, IP	Hu
ADAM10/KUZ	500-9424	\$319	0.2 ml	Rabbit	WB	Hu
Adenovirus Fiber	500-7014	\$399	0.2 ml	Mouse	WB, IF	Adenovirus
Adenovirus Type 2 E1A	500-5534	\$299	0.2 ml	Mouse	WB, IHC-P, IF	Adenovirus
Adenovirus Type 5 E1A	500-5544	\$299	0.2 ml	Mouse	WB, IP, IHC-P, IF	Adenovirus
ADP-ribosylation Factor (ARF-6)	500-7024	\$399	0.2 ml	Mouse	WB	Hu
Adrenocorticotrophic Hormone	500-6614	\$289	0.2 ml	Mouse	IHC-P	Hu
AFP	500-2954	\$129	0.2 ml	Rabbit	IHC(P), WB	Hu
Aggrecan	600-670	\$215	0.2 ml	Rabbit	WB, ELISA	Hu
AKT1/PKB $\alpha$	600-200	\$199	0.2 ml	Rabbit	WB, IP	Hu, Ms, Rt
AKT2/PKB $\beta$	600-230	\$199	0.2 ml	Rabbit	WB, ELISA, IP	Hu, Ms, Rt
AKT3/PKB $\gamma$	600-240	\$199	0.2 ml	Rabbit	WB, ELISA, IP	Hu
ALK/p80	500-1094	\$299	0.2 ml	Rabbit	IHC(P)	Hu
Alkaline Phosphatase (AP)	500-7044	\$239	0.2 ml	Mouse	AP	Hu
Alpha Fetoprotein (AFP)	500-6624	\$199	0.2 ml	Mouse	IHC-P	Hu,Dg,Pg
Amylin Peptide	500-3404	\$249	0.2 ml	Rabbit	IHC(P)	Hu
Amyloid beta	500-3534	\$299	0.2 ml	Rabbit	IHC(P), WB, IP	Hu
Androgen Receptor	500-2724	\$349	0.2 ml	Rabbit	IHC(P), WB, IP, IF	Hu, Ms, Rt
Androgen Receptor	500-6634	\$399	0.2 ml	Mouse	WB, IP, IHC-P, IF, GS	Hu,Dg
Annexin IV	500-13514	\$349	0.2 ml	Rabbit	WB	Hu, Ms, Rt
Annexin VI	500-12384	\$349	0.2 ml	Rabbit	IHC-P, WB	Hu, Ms, Rt
AR	600-480	\$199	0.2 ml	Rabbit	WB, ELISA	Hu, Ms, Rt
ARG1	600-490	\$220	0.2 ml	Rabbit	WB, ELISA	Hu
ASK1	600-260	\$195	0.2 ml	Rabbit	WB, ELISA, IP	Hu
Ask1 / MAPKKK5	500-7084	\$379	0.2 ml	Rabbit	WB	Hu
ATF2	500-11284	\$319	0.2 ml	Rabbit	IHC, WB, ELISA, IP	Hu, Ms

BAFF/BLys/Thank/Tal-1	500-9494	\$319	0.2 ml	Rabbit	WB	Hu, Ms, Rt
BAG-1	500-5564	\$399	0.2 ml	Mouse	WB, IP, IHC-P	Hu
Bak	500-3324	\$299	0.2 ml	Rabbit	IHC(P)	Hu, Ms, Hm
Bax	500-6644	\$369	0.2 ml	Mouse	WB, IHC-P, IF	Hu
BCL-10	500-7114	\$379	0.2 ml	Rabbit	WB	Hu, Ms, Rt
BCL-2	500-10544	\$349	0.2 ml	Rabbit	WB	Hu
Bcl-2a	500-1124	\$269	0.2 ml	Mouse	IHC(P), WB, IP, IF, FC	Hu
Bcl-6	500-6914	\$349	0.2 ml	Mouse	IHC-P	Hu, Rt
Bcl-X	500-3374	\$299	0.2 ml	Rabbit	IHC(P)	Hu, Ms
bcl-X	500-6654	\$369	0.2 ml	Mouse	IHC-P, IP, IF, FC	Hu, Ms, Rt
BCAR3 (Non-phospho)	600-090	\$280	0.2 ml	Rabbit	WB, IHC	Hu, Ms, Rt
BCAR3	600-100	\$265	0.2 ml	Rabbit	WB, IHC	Hu, Ms, Rt
Beta-Amyloid	600-730	\$225	0.2 ml	Rabbit	WB, ELISA	Hu
Beta-Amyloid (1-40)	600-740	\$255	0.2 ml	Rabbit	WB, ELISA	Hu
Beta-Amyloid (1-42)	600-750	\$265	0.2 ml	Rabbit	WB, ELISA	Hu
Bim	500-4364	\$299	0.2 ml	Rabbit	IHC(P), WB	Hu, Ms, Rt
Blk	500-10904	\$349	0.2 ml	Rabbit	WB	Hu
Bovine Serum Albumin	500-7144	\$399	0.2 ml	Mouse	WB	Cw
Bromodeoxyuridine (BrdU)	500-4844	\$269	0.2 ml	Mouse	IHC-P, IF, FC	All species
BTC	600-140	\$220	0.2 ml	Rabbit	WB, ELISA,	Hu
CA 125	500-3174	\$219	0.2 ml	Mouse	IHC(P)	Hu
CA 19-9	500-3164	\$199	0.2 ml	Mouse	IHC(P)	Hu
c-Abl	500-6564	\$369	0.2 ml	Mouse	WB, IP, IHC-P, IF	Hu, Ms
Cadherin (pan)	500-2364	\$339	0.2 ml	Rabbit	IHC(P)	Hu
Cadherin E	500-8644	\$349	0.2 ml	Mouse	IHC(P)	Hu
Cadherin-E	500-3464	\$299	0.2 ml	Rabbit	IHC(P)	Hu
CAK beta	500-10464	\$349	0.2 ml	Rabbit	WB	Hu
Calbindin D28	500-10344	\$349	0.2 ml	Rabbit	IHC-P, WB	Hu, Ms, Rt
Calcitonin	500-1154	\$349	0.2 ml	Rabbit	IHC(P)	Hu, Ms, Rt, Mk, Dg
Calmodulin	500-7164	\$349	0.2 ml	Mouse	WB	Hu, Rt, Cw, Ck
Calponin	500-4874	\$269	0.2 ml	Mouse	IHC-P	Hu
Calretinin	500-1174	\$299	0.2 ml	Rabbit	IHC(P)	Hu, Ms, Rt
Calumenin	600-640	\$215	0.2 ml	Rabbit	WB, ELISA	Hu, Ms, Rt
CaM Kinase IV	500-10604	\$349	0.2 ml	Rabbit	IHC-P, WB	Hu, Rt
cAMP	500-9534	\$319	0.2 ml	Mouse	WB	Hu, Ms, Rt
Casein (kappa)	600-830	\$220	0.2 ml	Rabbit	WB, ELISA	Ms
Caspase 1	500-3914	\$299	0.2 ml	Rabbit	IHC(P), WB, IP	Hu, Ms, Rt
Caspase 2	500-7174	\$299	0.2 ml	Rabbit	WB	Hu, Ms, Rt
Caspase 3	500-6574	\$245	0.2 ml	Mouse	WB, IP, IHC-P	Hu
Caspase 5	500-7184	\$245	0.2 ml	Rabbit	WB	Hu, Ms, Rt
Caspase 6	500-7194	\$235	0.2 ml	Rabbit	WB	Hu
Caspase 7	500-2274	\$255	0.2 ml	Rabbit	IHC(P), WB	Hu
Caspase 8	500-2284	\$279	0.2 ml	Rabbit	IHC(P), WB, IP	Hu
Caspase 13	500-9554	\$199	0.2 ml	Rabbit	WB	Hu, Ms, Rt
Catenin alpha	500-3334	\$299	0.2 ml	Rabbit	IHC(P), WB	Hu, Ms, Xe

Catenin beta	500-2264	\$339	0.2 ml	Rabbit	IHC(P), WB, IP	Hu, Ms, Rt
Catenin gamma	500-3684	\$299	0.2 ml	Rabbit	IHC(P), WB, IP	Hu, Ms, Rt
Cathepsin D	500-2824	\$339	0.2 ml	Rabbit	IHC(P)	Hu
CCR10	500-13544	\$349	0.2 ml	Rabbit	WB	Hu
CCR5	500-9574	\$319	0.2 ml	Rabbit	WB	Hu
CCR8	500-10794	\$349	0.2 ml	Rabbit	IHC-P, WB	Hu
CCR8	500-9584	\$319	0.2 ml	Rabbit	WB	Hu
CD10	500-10454	\$349	0.2 ml	Rabbit	WB	Hu
CD10	500-1194	\$399	0.2 ml	Mouse	IHC(P)	Hu, Rt
CD105	500-4234	\$299	0.2 ml	Rabbit	IHC(P)	Hu
CD117 (kit)	600-970	\$195	0.2 ml	Rabbit	WB, ELISA IHC(P)	Hu, Ms
CD11b	500-10944	\$349	0.2 ml	Rabbit	WB	Hu
CD133	600-190	\$215	0.2 ml	Rabbit	WB, ELISA, IP	Hu, Ms, Rt
CD138	500-4564	\$299	0.2 ml	Rabbit	IHC(P)	Hu
CD14	500-10554	\$349	0.2 ml	Rabbit	WB	Hu
CD146	500-11134	\$349	0.2 ml	Rabbit	IHC-P	Hu
CD147/EMMPRIN /	500-10534	\$349	0.2 ml	Rabbit	WB	Hu
CD15	500-1204	\$199	0.2 ml	Mouse	IHC(P)	Hu
CD154	500-13554	\$349	0.2 ml	Rabbit	WB	Hu
CD156b (IN)	600-870	\$220	0.2 ml	Rabbit	WB, ELISA	Hu, Ms
CD156b (NT)	600-880	\$220	0.2 ml	Rabbit	WB, ELISA	Hu, Ms
CD1a	500-1214	\$399	0.2 ml	Mouse	IHC(P)	Hu
CD1a	500-4714	\$299	0.2 ml	Rabbit	WB	Hu
CD2	500-3044	\$299	0.2 ml	Rabbit	IHC(P)	Hu
CD20	500-11214	\$349	0.2 ml	Mouse	IHC-P	Hu
CD20	500-2564	\$269	0.2 ml	Rabbit	IHC(P), WB, IP	Hu
CD23	500-3024	\$299	0.2 ml	Rabbit	IHC(P)	Hu
CD25	500-13564	\$349	0.2 ml	Rabbit	WB	Hu
CD253 (TNFSF10)	600-930	\$225	0.2 ml	Rabbit	WB, ELISA	Hu
CD29	500-13574	\$349	0.2 ml	Rabbit	WB	Hu
CD3	500-1254	\$329	0.2 ml	Rabbit	IHC(P), WB	Hu, Mk, Dg
CD3 zeta	500-3054	\$299	0.2 ml	Rabbit	IHC(P), WB, IP	Hu, Ms, Rt
CD30	500-1264	\$289	0.2 ml	Mouse	IHC(P)	Hu
CD30	500-13484	\$349	0.2 ml	Rabbit	IHC-P, WB	Hu
CD31	500-11114	\$299	0.2 ml	Rabbit	IHC-P	Hu
CD31	500-1274	\$269	0.2 ml	Mouse	IHC(P), IF	Hu
CD34	500-1284	\$329	0.2 ml	Mouse	IHC(P)	Hu
CD34	500-4644	\$299	0.2 ml	Rabbit	WB	Hu
CD38	500-3254	\$269	0.2 ml	Rabbit	IHC(P)	Hu
CD4	500-10434	\$349	0.2 ml	Rabbit	WB	Hu
CD4	500-4704	\$299	0.2 ml	Rabbit	WB	Hu
CD40	500-3704	\$299	0.2 ml	Rabbit	IHC(P), WB, IP	Hu, Ms, Rt
CD45/LCA	500-10564	\$349	0.2 ml	Rabbit	WB	Hu
CD45/LCA	500-12434	\$349	0.2 ml	Mouse	IHC-P	Hu
CD45RO	500-1324	\$269	0.2 ml	Mouse	IHC(P)	Hu
CD5	500-2474	\$369	0.2 ml	Rabbit	IHC(P)	Hu

CD54	500-10934	\$349	0.2 ml	Rabbit	WB	Hu
CD56	500-1374	\$229	0.2 ml	Mouse	IHC(P)	Hu
CD56	500-4474	\$339	0.2 ml	Rabbit	IHC(P)	Hu
CD57	500-1384	\$239	0.2 ml	Mouse	IHC(P)	Hu
CD68	500-1394	\$269	0.2 ml	Mouse	IHC(P)	Hu, Rt, Mk
CD7	500-4414	\$299	0.2 ml	Rabbit	WB	Hu
CD72	500-10924	\$349	0.2 ml	Rabbit	WB	Hu
CD79a	500-2494	\$229	0.2 ml	Rabbit	IHC(P), WB, IF	Hu, Ms, Rt
CD8	500-2484	\$419	0.2 ml	Rabbit	IHC(P)	Hu
CD9	500-11014	\$349	0.2 ml	Rabbit	IHC-P, WB	Hu
CD94	500-4624	\$299	0.2 ml	Mouse	ELISA, WB	Hu
CD95	500-2504	\$349	0.2 ml	Rabbit	IHC(P)	Hu
CD99	500-3394	\$279	0.2 ml	Rabbit	IHC(P)	Hu
CD156b	601-270	\$280	0.2 ml	Rabbit	IHC(P), WB	Hu, Ms, Rt
CDC25A	500-5574	\$250	0.2 ml	Mouse	WB, IP, IHC-P, IF	Hu,Rt
CDC25B	500-4884	\$290	0.2 ml	Mouse	IHC-P	Hu, Rt
CDC25C	500-7204	\$250	0.2 ml	Mouse	WB, IP, IF	Hu
CDC34	500-7214	\$285	0.2 ml	Rabbit	WB	Hu
CDC37	500-7224	\$245	0.2 ml	Rabbit	WB	Hu,Ms
CDC47	500-7234	\$255	0.2 ml	Mouse	IHC-P, WB, IP, IF	Hu, Ms, Rt
CDC6	500-7244	\$275	0.2 ml	Mouse	WB, IP	Hu
CDC7 Phosphatase	500-4894	\$260	0.2 ml	Mouse	WB, IP, IHC-P	Hu
Cdk2	500-5594	\$245	0.2 ml	Mouse	WB, IHC-P, IF	Hu, Ms, Rt
Cdk3	500-7264	\$235	0.2 ml	Rabbit	WB	Hu, Ms, Rt
Cdk4	500-7274	\$255	0.2 ml	Mouse	WB, IP, IF, KA	Hu, Ms, Rt
Cdk5	500-5604	\$255	0.2 ml	Mouse	WB, IP, IHC-P, IF	Hu, Ms, Rt
Cdk6	500-7284	\$245	0.2 ml	Mouse	WB, IP, IF	Hu, Ms, Rt
Cdk7	500-7294	\$249	0.2 ml	Mouse	WB, IP, IF, FC	Hu,Rt
Cdk8	500-7304	\$249	0.2 ml	Rabbit	WB, IP, IF, KA	Hu, Ms, Rt
CEA	500-2974	\$129	0.2 ml	Rabbit	IHC(P), WB	Hu
CEA / CD66e	500-6584	\$219	0.2 ml	Mouse	IHC-P	Hu
c-erbB2	500-12424	\$255	0.2 ml	Mouse	IHC-P, WB	Hu, Ms, Rt
c-erbB-2	500-2444	\$259	0.2 ml	Rabbit	IHC(P), WB, IP	Hu, Ms, Rt
c-erbB-2/HER-2	500-4904	\$255	0.2 ml	Mouse	WB, IP, IHC-P	Hu, Ms, Rt
c-erbB3	500-3434	\$255	0.2 ml	Rabbit	IHC(P), IP	Hu
c-erbB-3/HER-3	500-7314	\$269	0.2 ml	Mouse	IHC-P, FC	Hu
c-erbB-4	500-2764	\$259	0.2 ml	Rabbit	IHC(P), WB, IP	Hu, Ms
c-erbB-4/HER-4	500-6664	\$299	0.2 ml	Mouse	IHC-P	Hu,Ms
c-fos	500-4464	\$280	0.2 ml	Rabbit	IHC(P)	Hu
Chk1	500-7324	\$299	0.2 ml	Mouse	WB	Hu
Chk2	500-4914	\$299	0.2 ml	Mouse	WB, IHC-P	Hu
Chromogranin A	500-1524	\$199	0.2 ml	Rabbit	IHC(P)	Hu, Rt, Mk
Chromogranin A	500-6674	\$219	0.2 ml	Mouse	WB, IHC-P	Hu, Rb, Rt
CIS-1	500-9594	\$250	0.2 ml	Rabbit	WB	Hu
c-jun	500-4684	\$245	0.2 ml	Rabbit	WB	Hu
Claudin 1	500-3414	\$299	0.2 ml	Rabbit	IHC(P)	Hu, Ms, Rt

Claudin 10	500-10244	\$299	0.2 ml	Rabbit	IHC-P	Hu, Ms, Rt
Claudin 11	500-8771	\$189	0.2 ml	Rabbit	IHC(P)	Hu
Claudin 11	500-8774	\$299	0.2 ml	Rabbit	IHC(P)	Hu
Claudin 12	500-10724	\$289	0.2 ml	Rabbit	WB	Hu
Claudin 14	500-10484	\$299	0.2 ml	Rabbit	WB	Hu
Claudin 2	500-3924	\$299	0.2 ml	Rabbit	IHC(P)	Hu, Ms
Claudin 3	500-3834	\$299	0.2 ml	Rabbit	IHC(P), WB	Hu, Ms, Rt
Claudin 4	500-3984	\$299	0.2 ml	Rabbit	IHC(P), WB	Hu, Ms
Claudin 5	500-3754	\$299	0.2 ml	Rabbit	IHC(P), WB	Hu, Ms
Claudin 7	500-10594	\$289	0.2 ml	Rabbit	IHC-P	Hu, Ms, Rt
c-Met	500-10614	\$290	0.2 ml	Rabbit	IHC-P, WB	Hu
c-myb / v-myb	500-4934	\$299	0.2 ml	Mouse	WB, IHC-P	Hu
c-Myc	600-510	\$199	0.2 ml	Rabbit	WB, ELISA	
Collagen I	500-13604	\$299	0.2 ml	Rabbit	WB	Hu
Collagen II	500-5634	\$299	0.2 ml	Mouse	WB, IHC-P, IF, FC	Hu, Ms, Rt
Collagen IV	500-1534	\$280	0.2 ml	Mouse	IHC(P)	Hu
Connexin 43	500-2744	\$285	0.2 ml	Rabbit	IHC(P), WB, IP	Hu, Ms, Rt
CREB	500-7354	\$269	0.2 ml	Rabbit	WB	Hu, Ms, Rt
CREB-Binding Protein	500-5644	\$299	0.2 ml	Mouse	IHC-P	Hu,Rt
CRP	600-990	\$199	0.2 ml	Rabbit	WB, ELISA	Hu, Ms
c-Src	500-7364	\$299	0.2 ml	Rabbit	IP	Hu, Ms, Rt
Cyclin A	500-7384	\$299	0.2 ml	Rabbit	IHC-P, WB, IP	Hu, Ms, Rt
Cyclin B1	500-4104	\$299	0.2 ml	Rabbit	IHC(P), WB, IP	Hu, Ms, Rt
Cyclin C	500-7394	\$245	0.2 ml	Rabbit	WB, IP, IF, KA	Hu, Ms, Rt
Cyclin D1	500-1544	\$240	0.2 ml	Rabbit	IHC(P), WB, IP, IF, KA	Hu, Ms, Rt
Cyclin D2	500-7404	\$230	0.2 ml	Mouse	WB, IP, IF, FC	Hu, Ms, Rt
Cyclin D3	500-5654	\$239	0.2 ml	Mouse	WB, IP, IHC-P, IF, FC	Hu, Ms, Rt
Cyclin E	500-3604	\$269	0.2 ml	Rabbit	IHC(P), WB, IP, IF, KA	Hu, Ms
Cyclin G1	500-10684	\$249	0.2 ml	Rabbit	WB	Hu
Cytochrome C	500-12414	\$249	0.2 ml	Rabbit	IHC-P	Hu
Cytochrome C	500-7414	\$249	0.2 ml	Mouse	IHC-P, WB	Hu, Ms, Rt
E2F-1	500-7504	\$255	0.2 ml	Mouse	WB, IF, GSA	Hu, Ms, Rt
E2F2	500-13614	\$255	0.2 ml	Rabbit	WB	Hu, Ms, Rt
E2F-2	500-7514	\$265	0.2 ml	Mouse	WB, IF	Hu,Rt
E2F-3	500-7524	\$279	0.2 ml	Mouse	IF	Hu, Rt
E2F-4	500-4994	\$295	0.2 ml	Mouse	WB, IHC-P, IF, GSA	Hu,Rt
E2F-5	500-7534	\$295	0.2 ml	Rabbit	WB	Hu, Ms, Rt
EGFR	500-2454	\$289	0.2 ml	Rabbit	IHC(P), WB	Hu
EGFR	500-6694	\$299	0.2 ml	Mouse	WB, IP, IHC-P	Hu
Endostatin	500-5004	\$269	0.2 ml	Rabbit	WB, IHC-P	Hu
eNOS	500-4114	\$299	0.2 ml	Rabbit	IHC(P), WB	Hu, Ms, Rt
Eotaxin	500-9714	\$299	0.2 ml	Rabbit	WB	Hu
Ephrin A4	500-11154	\$299	0.2 ml	Rabbit	IHC-P	Hu
Ephrin B1	500-13624	\$279	0.2 ml	Rabbit	WB	Hu
Ephrin B3	500-11224	\$245	0.2 ml	Rabbit	IHC-P	Hu

Ephrin B3	500-13634	\$245	0.2 ml	Rabbit	WB	Hu
ERAB	500-10324	\$225	0.2 ml	Rabbit	IHC-P, WB	Hu
ERCC1	500-5674	\$299	0.2 ml	Mouse	WB, IP, IHC-P	Hu,Rt
ERK1	500-3564	\$299	0.2 ml	Rabbit	IHC(P), WB, IP	Hu, Ms, Rt
ERK2	500-3974	\$299	0.2 ml	Rabbit	IHC(P), WB, IP	Hu, Ms, Rt
Estrogen Receptor	500-1644	\$299	0.2 ml	Rabbit	IHC(P), WB	Hu, Ms, Rt
Estrogen Receptor beta	500-4744	\$299	0.2 ml	Rabbit	WB	Hu
EWS-b	600-820	\$225	0.2 ml	Rabbit	WB, ELISA	Hu, Ms, Rt
FGF 4	600-890	\$230	0.2 ml	Rabbit	WB, ELISA	Hu, Ms, Rt
FGFR-1	500-10584	\$285	0.2 ml	Rabbit	IHC-P	Hu
FGFR-2	500-10574	\$285	0.2 ml	Rabbit	IHC-P	Hu
FGFR-3	500-10234	\$245	0.2 ml	Rabbit	IHC-P, WB	Hu
Fibrinogen (gamma)	600-800	\$215	0.2 ml	Rabbit	WB, ELISA	Hu, Ms
Fibulin-2	600-630	\$235	0.2 ml	Rabbit	WB, ELISA	Hu, Ms
GABA a Receptor 1	500-2884	\$299	0.2 ml	Rabbit	IHC(P), WB, IP	Hu, Ms, Rt
Glucagon	500-6944	\$210	0.2 ml	Rabbit	IHC-P	Hu, Ms, Rt
Glucose-Regulated Protein 94	500-5734	\$299	0.2 ml	Rat	WB, IP, IHC-P	Hu, Ms, Rt
GluR 2/3	500-3004	\$289	0.2 ml	Rabbit	IHC(P), WB, IP	Hu, Ms, Rt
GluR1	500-3064	\$299	0.2 ml	Rabbit	IHC(P), WB	Hu, Ms, Rt
GluR4	500-2904	\$289	0.2 ml	Rabbit	IHC(P), WB, IP	Hu, Ms, Rt
GluR6/7	500-2934	\$285	0.2 ml	Rabbit	IHC(P), WB, IP	Hu, Ms, Rt
GLUT-1	500-2844	\$279	0.2 ml	Rabbit	IHC(P), WB, IF	Hu, Rt
GLUT-3	500-3274	\$289	0.2 ml	Rabbit	IHC(P), WB, ELISA	Hu
Glycogen Synthase Kinase 3b (GSK3b)	500-7614	\$279	0.2 ml	Rabbit	WB	Hu, Ms, Rt
GPCR119	600-710	\$225	0.2 ml	Rabbit	WB, ELISA	Ms
GSK-3	500-2914	\$349	0.2 ml	Rabbit	IHC(P), WB	Hu, Ms, Rt
H5N1(NT) (Influenza A virus)	601-230	\$225	0.2 ml	Rabbit	WB, ELISA	
H1N1(CT) (Influenza A virus)	601-240	\$225	0.2 ml	Rabbit	WB, ELISA	
H2N2 (Influenza A virus)	601-250	\$225	0.2 ml	Rabbit	WB, ELISA	
HbcAg	500-3194	\$169	0.2 ml	Mouse	IHC(P)	Hu
hCG beta	500-3114	\$169	0.2 ml	Mouse	IHC(P)	Hu
Heat Shock Factor 1	500-7654	\$255	0.2 ml	Rat	WB, IP, IF, GSA	Hu, Ms, Rt
Heat Shock Factor 2	500-7664	\$265	0.2 ml	Rat	WB, IP, IF, GSA	Hu,Ms,Mo
Hepatitis B virus core Ag	500-1704	\$149	0.2 ml	Rabbit	IHC(P)	Hu
Hepatitis B virus surface Ag	500-1714	\$199	0.2 ml	Mouse	IHC(P)	Hu
hGH	500-3124	\$239	0.2 ml	Mouse	IHC(P)	Hu
HPV 16	500-5834	\$289	0.2 ml	Mouse	IHC-P, IF	Type 16 vir
HPV 16-E7	500-7694	\$299	0.2 ml	Mouse	IF, FC	HPV-16
HRP	500-8634	\$199	0.2 ml	Rabbit	ELISA	all species
HSP27	500-5764	\$290	0.2 ml	Mouse	WB, IHC-P	Hu, Ck, Ms
HSP60	500-5774	\$295	0.2 ml	Mouse	WB, IP, IHC-P, IF	Hu, Ms, Rt
HSP70	500-5784	\$295	0.2 ml	Mouse	WB, IP, IHC-P, IF, FC	Hu,Mo,Co
HSP75	500-7674	\$290	0.2 ml	Mouse	WB	Hu
HSP84	500-5804	\$285	0.2 ml	Rabbit	WB, IP, IHC-P, IF	Hu, Ms, Rt
HSP86	500-5794	\$269	0.2 ml	Rabbit	WB, IP, IHC-P, IF	Hu, Ms, Rt
HSV	500-9804	\$279	0.2 ml	Rabbit	WB, IP	HSV infected

HYOU1	600-620	\$240	0.2 ml	Rabbit	WB, ELISA	Hu, Ms, Rt
IFN gamma	500-4584	\$299	0.2 ml	Mouse	ELISA	Hu
IgA	500-1744	\$119	0.2 ml	Rabbit	IHC(P)	Hu
IgA	500-5094	\$199	0.2 ml	Mouse	IHC-P	Hu
IGF-1R	500-10444	\$299	0.2 ml	Rabbit	WB	Hu
IGF-1R	500-2534	\$299	0.2 ml	Mouse	IHC(P)	Hu
IGF-I	500-3724	\$299	0.2 ml	Rabbit	IHC(P)	Hu, Ms, Rt
IGF-I	500-7704	\$299	0.2 ml	Mouse	WB	Hu, Ms, Rt
IgG	500-1754	\$119	0.2 ml	Rabbit	IHC(P)	Hu
IgM	500-1764	\$119	0.2 ml	Rabbit	IHC(P)	Hu
IgM (m-Heavy Chain)	500-5104	\$219	0.2 ml	Mouse	IHC-P	Hu
I-Kappa-B Kinase b (IKKb)	500-7714	\$379	0.2 ml	Rabbit	WB, IP	Hu, Ms, Rt
IL-10	500-8554	\$299	0.2 ml	Rat	ELISA	Hu
IL-10R	500-8574	\$299	0.2 ml	Rat	ELISA	Hu
IL-13	500-4604	\$299	0.2 ml	Mouse	ELISA	Hu
IL17	500-4544	\$339	0.2 ml	Mouse	ELISA	Hu
IL-2	500-8504	\$299	0.2 ml	Rat	ELISA	Hu
IL-23	500-8584	\$299	0.2 ml	Rat	ELISA	Hu
IL-3	500-8514	\$299	0.2 ml	Rat	ELISA	Hu
IL-30	500-8564	\$299	0.2 ml	Rat	ELISA	Hu
IL-4	500-8524	\$299	0.2 ml	Rat	ELISA	Hu
IL-5	500-8534	\$299	0.2 ml	Rat	ELISA	Hu
IL-6	500-8544	\$299	0.2 ml	Rat	ELISA	Hu
iNOS	500-3744	\$299	0.2 ml	Rabbit	IHC(P), WB	Hu, Ms, Rt
Insulin	500-1774	\$199	0.2 ml	Mouse	IHC(P)	Hu, Rt
Insulin Receptor	500-5844	\$279	0.2 ml	Mouse	IHC-P, FC, KA	Hu
IRAK	500-7744	\$235	0.2 ml	Rabbit	WB	Hu, Ms, Rt
IRAK-2	500-9834	\$255	0.2 ml	Rabbit	WB	Hu
IRAK-M	500-9844	\$250	0.2 ml	Rabbit	WB	Hu, Ms, Rt
IRAK-4	600-560	\$245	0.2 ml	Mouse	WB, ELISA	Hu, Ms, Rt
IRS-1	500-12594	\$260	0.2 ml	Rabbit	IHC-P	Hu
JAK1	600-350	\$189	0.2 ml	Rabbit	WB, ELISA, IP	Hu, Ms, Rt
JAK2	600-360	\$189	0.2 ml	Rabbit	WB, ELISA, IP	Hu, Ms, Rt
JAK3	600-370	\$189	0.2 ml	Rabbit	WB, ELISA, IP	Hu, Ms, Rt
JAK-3	500-5114	\$255	0.2 ml	Mouse	WB, IP, IHC-P	Hu, Ms
JNK Activating kinase (JNK1)	500-7764	\$279	0.2 ml	Rabbit	WB	Hu, Ms, Rt
Kallikrein 3/PSA	600-860	\$215	0.2 ml	Rabbit	WB, ELISA	Hu
Kappa Light Chain (B-Cell Marker)	500-1784	\$199	0.2 ml	Rabbit	IHC(P)	Hu
Keratin 10	500-5874	\$229	0.2 ml	Mouse	IHC-P, IF	Hu, Rt, Pg
Keratin 10/13	500-5884	\$199	0.2 ml	Mouse	IHC-P, IF	Hu, Rt, Ct
Keratin 14	500-2624	\$209	0.2 ml	Rabbit	IHC(P), WB	Hu
Keratin 14	500-5894	\$229	0.2 ml	Mouse	WB, IHC-P	Hu
Keratin 15	500-5124	\$229	0.2 ml	Mouse	IHC-P, IF	Hu, Ms, Rt, Cw
Keratin 16	500-5904	\$199	0.2 ml	Mouse	IHC-P, IF	Hu
Keratin 18	500-5914	\$169	0.2 ml	Mouse	WB, IHC-P, IF	Hu
Keratin 19	500-2634	\$179	0.2 ml	Rabbit	IHC(P), IF	Hu



Keratin 19	500-5924	\$199	0.2 ml	Mouse	WB, IHC-P, IF	Hu
Keratin 20	500-13674	\$289	0.2 ml	Rabbit	WB	Hu
Keratin 20	500-1844	\$280	0.2 ml	Mouse	IHC(P), WB	Hu, Ms
Keratin 5/6/18	500-5934	\$199	0.2 ml	Mouse	IHC-P	Hu, Rt, Cw
Keratin 5/8	500-5944	\$199	0.2 ml	Mouse	IHC-P, IF	Hu
Keratin 6	500-5954	\$199	0.2 ml	Mouse	IHC-P	Hu, Ms
Keratin 7	500-12354	\$299	0.2 ml	Rabbit	IHC-P	Hu
Keratin 7	500-5964	\$289	0.2 ml	Mouse	IHC-P	Hu
Keratin 8	500-3264	\$199	0.2 ml	Rabbit	IHC(P)	Hu
Keratin 8	500-5144	\$239	0.2 ml	Mouse	IHC-P, IP	Hu
Keratin 8/18	500-1864	\$229	0.2 ml	Mouse	IHC(P)	Hu
Keratin, HMW	500-3224	\$169	0.2 ml	Mouse	IHC(P), IF	Hu, Ms, Rt
Keratin, LMW	500-3214	\$169	0.2 ml	Mouse	IHC(P), IF	Hu, Ms, Rt
Ki-67	500-1874	\$299	0.2 ml	Rabbit	IHC(P), WB	Hu, Rt
KPI-2	500-9864	\$299	0.2 ml	Rabbit	WB	Hu
Lambda Light chain	500-1884	\$199	0.2 ml	Rabbit	IHC(P)	Hu
Lamin B	500-13494	\$289	0.2 ml	Rabbit	IHC-P, WB	Hu
Laminin B1/b1	500-6024	\$289	0.2 ml	Rat	WB, IP, IHC-P, IF	Hu, Ms
Laminin B2 /g1	500-5154	\$349	0.2 ml	Mouse	IHC-P	Hu, Rt
Laminin B2/g1	500-6034	\$349	0.2 ml	Rat	WB, IP, IHC-P, IF	Hu, Ms
Laminin Receptor	500-6044	\$299	0.2 ml	Mouse	IHC-P, IF, FC	Hu
Laminin-s	500-7794	\$299	0.2 ml	Mouse	WB, IP	Hu, Rt, Bv
Legumain	600-650	\$245	0.2 ml	Rabbit	WB, ELISA	Hu, Ms, Rt
LH	500-3094	\$169	0.2 ml	Mouse	IHC(P)	Hu
L-Plastin	600-760	\$255	0.2 ml	Rabbit	WB, ELISA	Hu, Ms, Rt
Luciferase	500-7824	\$269	0.2 ml	Mouse	WB	All species
Macrophage	500-6074	\$229	0.2 ml	Mouse	IHC-P	Hu, Ms, Rt
Maltose Binding Protein	500-7844	\$299	0.2 ml	Mouse	WB, IF	All species
Mek1	500-7854	\$289	0.2 ml	Rabbit	WB	Hu, Ms, Rt
Mek2	500-7864	\$289	0.2 ml	Rabbit	WB	Hu, Ms, Rt
MEK-5/MAPKK-5	500-9874	\$285	0.2 ml	Rabbit	WB	Hu, Ms, Rt
Mek6	500-7874	\$279	0.2 ml	Rabbit	WB, IP	Hu, Ms, Rt
Mekk-1	500-7884	\$289	0.2 ml	Rabbit	WB	Hu, Ms, Rt
Meteorin(CT)	600-450	\$220	0.2 ml	Rabbit	IHC, WB, ELISA	Hu, Ms, Rt
Meteorin(IN)	600-440	\$220	0.2 ml	Rabbit	IHC, WB, ELISA	Hu, Ms, Rt
Meteorin(NT)	600-430	\$220	0.2 ml	Rabbit	IHC, WB, ELISA	Hu, Ms, Rt
mGluR1	500-2894	\$289	0.2 ml	Rabbit	IHC(P), WB, IP	Hu, Ms, Rt
mGluR5	500-2874	\$289	0.2 ml	Rabbit	IHC(P), WB, IP	Hu, Rt, Rb
MHC I (HLA-A,B,C)	500-7914	\$239	0.2 ml	Mouse	FC	Hu
MHC II (HLA-DP and DR)	500-6144	\$239	0.2 ml	Mouse	IHC-P, FC	Hu
Midkine	600-110	\$210	0.2 ml	Rabbit	WB, ELISA, IP	Hu
Mitochondria	500-5204	\$359	0.2 ml	Mouse	WB, IHC-P, IF	Hu
MKK3	500-12974	\$319	0.2 ml	Rabbit	IHC-P, WB, ELISA	Hu, Rt
MKK6	500-13064	\$299	0.2 ml	Rabbit	IHC-P, WB, ELISA	Hu, Rt
MMP-1	500-3574	\$299	0.2 ml	Rabbit	IHC(P), WB	Hu
MMP-1 (Collagenase-I)	500-7964	\$399	0.2 ml	Mouse	WB	Hu

MMP-2	500-3654	\$299	0.2 ml	Rabbit	IHC(P), WB	Hu
MMP-2 (72kDa Collagenase IV)	500-6744	\$299	0.2 ml	Mouse	WB, IHC-P	Hu, Ms, Rt
MMP-3	500-12674	\$289	0.2 ml	Rabbit	IHC-P	Hu
MMP-3 (Stromelysin-1)	500-6194	\$299	0.2 ml	Mouse	WB, IHC-P, IF	Hu
MMP-7 (Matrilysin)	500-6204	\$290	0.2 ml	Mouse	IHC-P, IF, AP	Hu
MMP-8	500-9884	\$289	0.2 ml	Rabbit	WB	Hu
MMP-9	500-3664	\$289	0.2 ml	Rabbit	IHC(P), WB	Hu, Gp
MMP-9 (92kDa Collagenase IV)	500-7974	\$269	0.2 ml	Mouse	WB, IP	Hu,Rt
MMP-10	500-3674	\$260	0.2 ml	Rabbit	IHC(P), WB	Hu
MMP-10 (Stromilysin-2)	500-6734	\$255	0.2 ml	Mouse	WB, IP, IHC-P	Hu
MMP-11 (Stromelysin-3)	500-5214	\$280	0.2 ml	Mouse	WB, IP, IHC-P	Hu
MMP-12	600-700	\$295	0.2 ml	Rabbit	WB, ELISA	Hu
MMP-13 (Collagenase-3)	500-6184	\$280	0.2 ml	Mouse	IHC-P, IP	Hu, Ms, Rt
MMP-14	500-3864	\$299	0.2 ml	Rabbit	IHC(P), WB	Hu
MMP-15	500-4124	\$299	0.2 ml	Rabbit	IHC(P), WB	Hu, Ms
MMP-16 / MT3-MMP	500-5224	\$280	0.2 ml	Rabbit	IHC-P	Hu, Ms, Rt
MMP-17	600-710	\$295	0.2 ml	Rabbit	WB	Hu, Ms, Rt
MMP-19	500-4034	\$299	0.2 ml	Rabbit	IHC(P), WB	Hu
MMP-20	600-720	\$299	0.2 ml	Rabbit	WB	Hu
MMP-21	600-730	\$299	0.2 ml	Rabbit	WB	Hu
MMP-23	500-4044	\$299	0.2 ml	Rabbit	IHC(P), WB	Hu
MMP-23A	600-640	\$299	0.2 ml	Rabbit	WB	Hu
MMP-23B	600-650	\$299	0.2 ml	Rabbit	WB	Hu
MMP-24/MT5-MMP	600-660	\$299	0.2 ml	Rabbit	WB	Hu
MMP-26	600-670	\$299	0.2 ml	Rabbit	WB	Hu
MMP-27	600-680	\$299	0.2 ml	Rabbit	WB	Hu
MMP-28	600-690	\$299	0.2 ml	Rabbit	WB	Hu
mTOR	600-400	\$199	0.2 ml	Rabbit	WB, ELISA, IP	Hu, Ms, Rt
MyD88	500-7984	\$245	0.2 ml	Rabbit	WB	Hu,Ms
Myelin / Oligodendrocyte	500-7994	\$299	0.2 ml	Mouse	IF	Hu, Ms, Rt,
Myelin Basic Protein	500-1944	\$240	0.2 ml	Rabbit	IHC(P)	Hu
Myeloid Specific Marker	500-6244	\$229	0.2 ml	Mouse	IHC-P, IF, FC	Hu
MyoD1	500-8004	\$299	0.2 ml	Mouse	IP, IF	Hu, Ms, Rt
Myogenin	500-1964	\$280	0.2 ml	Mouse	IHC(P), WB, IP, IF, GS	Hu, Ms, Rt
Myoglobin	500-2994	\$149	0.2 ml	Rabbit	IHC(P), WB	Hu
Myosin Smooth Muscle Heavy Chain	500-5244	\$299	0.2 ml	Mouse	IHC-P	Hu
N-cadherin	500-10404	\$280	0.2 ml	Rabbit	IHC-P	Hu
Nck	500-8014	\$280	0.2 ml	Mouse	WB, IP	Hu
NCK2	500-11044	\$259	0.2 ml	Rabbit	IHC-P	Hu
NEFA	600-660	\$235	0.2 ml	Rabbit	WB, ELISA	Ms, Rt
Neurofilament (160kDa)	500-5254	\$249	0.2 ml	Mouse	WB, IHC-P	Hu
Neurofilament (200kDa)	500-5264	\$249	0.2 ml	Mouse	WB, IHC-P	Hu
Neurofilament (68kDa)	500-5274	\$249	0.2 ml	Mouse	WB, IHC-P	Hu
Neurofilaments (200kDa&68kDa)	500-1984	\$279	0.2 ml	Mouse	IHC(P), WB, IP	Hu, Ms, Rt
Neuron Specific Enolase	500-6754	\$299	0.2 ml	Mouse	WB, IP, IHC-P	Hu

Neurotensin Receptor	500-9924	\$299	0.2 ml	Rabbit	WB	Hu
Neutrophil Elastase	500-5284	\$289	0.2 ml	Mouse	IHC-P	Hu
NFkB p50	500-3634	\$299	0.2 ml	Rabbit	IHC(P)	Hu
NFkB p65	500-2754	\$250	0.2 ml	Rabbit	IHC(P), WB	Hu, Rt, Rb
NF-κB p100/p52	500-11454	\$299	0.2 ml	Rabbit	IHC, WB, ELISA, IP	Hu, Ms
NF-κB p105/p50	500-11464	\$299	0.2 ml	Rabbit	IHC, WB, ELISA	Hu, Ms
NGF-Receptor (p75NGFR)	500-6254	\$299	0.2 ml	Mouse	IHC-P, IF, FC	Hu, Rb, Mk
Oct-2	500-4304	\$195	0.2 ml	Rabbit	IHC(P), WB, IP	Hu, Ms, Rt
Oct-3	500-4654	\$195	0.2 ml	Rabbit	WB	Hu
Osteopontin	500-3284	\$299	0.2 ml	Rabbit	IHC(P), WB	Hu, Pg, Dg
Osteopontin(SPP1)	600-600	\$245	0.2 ml	Rabbit	WB, ELISA	Rt, Ms
p130	500-6284	\$289	0.2 ml	Mouse	WB, IP, IHC-P, IF	Hu,Rt
p130cas	500-13724	\$299	0.2 ml	Rabbit	WB	Hu
p130cas	500-6294	\$299	0.2 ml	Mouse	WB, IP, IHC-P	Hu,Rt
p14ARF	500-4354	\$299	0.2 ml	Rabbit	IHC(P), WB	Hu, Ms, Rt
p15INK4b	500-6304	\$289	0.2 ml	Mouse	WB, IP, IHC-P, IF	Hu,Do
p16INK4a	500-6314	\$279	0.2 ml	Mouse	WB, IP, IHC-P, IF	Hu,Ms
p170 / MDR/ p-Glycoprotein	500-4274	\$279	0.2 ml	Mouse	IHC(P)	Hu
P170/p-Glycoprotein	500-13734	\$279	0.2 ml	Rabbit	WB	Hu
p18	500-13744	\$280	0.2 ml	Rabbit	WB	Hu, Ms, Rt
p19	500-8054	\$245	0.2 ml	Rabbit	WB, IP	Hu,Ms
p21	500-6334	\$245	0.2 ml	Mouse	IHC-P, IP, IF	Hu
p27	500-2604	\$255	0.2 ml	Rabbit	IHC(P), WB, IP	Hu, Ms, Rt
p300 / CBP	500-6344	\$299	0.2 ml	Mouse	IHC-P, IP, IF	Hu, Ms, Rt
p35	500-8064	\$249	0.2 ml	Mouse	IP	Hu
P38	500-10004	\$250	0.2 ml	Rabbit	WB, IHC	Hu, Ms, Rt
P504S	500-4404	\$280	0.2 ml	Rabbit	IHC(P)	Hu
p53	500-2014	\$199	0.2 ml	Rabbit	IHC(P), WB	Hu, Ms, Rt
p53	500-6774	\$299	0.2 ml	Mouse	WB, IP, IHC-P, FC	Hu, Ms, Rt,
p57	500-6354	\$290	0.2 ml	Mouse	IHC-P, IP	Hu,Ms
p63	500-4574	\$299	0.2 ml	Rabbit	IHC(P), WB	Hu
p70(Ku)	500-5994	\$299	0.2 ml	Mouse	WB, IP, IHC-P, IF	Hu,Mo
p70/p80(Ku)	500-6004	\$299	0.2 ml	Mouse	IHC-P, IP, IF, GSA	Hu, Ms, Rt
P70S6K	500-9154	\$289	0.2 ml	Rabbit	WB, IP	Hu, Ms, Rt
p73	500-8074	\$280	0.2 ml	Rabbit	WB	Hu
p73a	500-8084	\$255	200µg	Mouse	IP, IF, GSA	Hu,Mo
p73a/b	500-8094	\$255	200µg	Mouse	IP, IF, GSA	Hu,Mo
p80(Ku))	500-7784	\$279	200µg	Mouse	WB, IP, IF, FC	Hu,Mo
p95VAV	500-8104	\$299	200µg	Mouse	WB, IP, IF	Hu,Ms
Parathyroid Hormone	500-2784	\$299	0.2 ml	Rabbit	IHC(P)	Hu
Parathyroid Hormone Receptor Type 1	500-5324	\$299	0.2 ml	Mouse	WB, IHC-P	Hu
PCNA	500-2854	\$269	0.2 ml	Rabbit	IHC(P), WB	Hu
PCNA	500-6784	\$290	0.2 ml	Mouse	WB, IP, IHC-P, FC	Hu, Ms, Rt
PDGF	500-3894	\$299	0.2 ml	Rabbit	IHC(P), WB, IF	Hu, Rt
Pdia 4	600-810	\$245	0.2 ml	Rabbit	WB, ELISA	Hu, Ms, Rt
PI-3-Kinase	500-8144	\$289	0.2 ml	Mouse	IF	Hu, Ms, Rt

PID/MTA2	500-10034	\$289	0.2 ml	Rabbit	WB	Hu, Ms, Rt
PKC	500-9234	\$280	0.2 ml	Rabbit	WB, IP	Hu, Ms, Rt
PKC epsilon	500-3584	\$299	0.2 ml	Rabbit	IHC(P), WB, IP	Hu, Ms, Rt
PKN	500-13764	\$265	0.2 ml	Rabbit	WB	Hu, Ms, Rt
PLAP	500-2044	\$199	0.2 ml	Rabbit	IHC(P)	Hu
Plasma Cell Marker	500-6374	\$269	0.2 ml	Mouse	IHC-P	Hu
Plasminogen	500-8154	\$270	0.2 ml	Mouse	WB	Hu
PLC gamma 1	500-8164	\$299	0.2 ml	Rabbit	WB, IP	Hu, Rt, Cw
PLC gamma2	500-12474	\$299	0.2 ml	Rabbit	IHC-P, WB	Hu, Ms, Rt
Plectin	600-770	\$235	0.2 ml	Rabbit	WB, ELISA	Hu, Ms, Rt
PPAR $\alpha$	600-150	\$195	0.2 ml	Rabbit	WB, ELISA, IP	Hu
PPAR $\beta$	600-160	\$195	0.2 ml	Rabbit	WB, ELISA, IP	Hu
PPAR $\delta$	600-180	\$195	0.2 ml	Rabbit	WB, ELISA, IP	Hu
PPAR $\gamma$	600-170	\$195	0.2 ml	Rabbit	WB, ELISA, IP	Hu
PPAR-gamma	500-4664	\$299	0.2 ml	Rabbit	WB	Hu
Presenillin	500-3484	\$299	0.2 ml	Rabbit	IHC(P)	Hu
Progesterone Receptor	500-2074	\$299	0.2 ml	Rabbit	IHC(P), WB	Hu
Prolactin Receptor	500-5364	\$299	0.2 ml	Mouse	WB, IHC-P	Hu
Prostate Apoptosis Response Protein-4	500-3424	\$299	0.2 ml	Rabbit	IHC(P), WB	Hu, Ms, Rt
Prostate Specific Acid Phosphatase	500-6394	\$199	0.2 ml	Mouse	IHC-P, IF	Hu, Rt, Rb
Protein Kinase C	500-8194	\$260	0.2 ml	Mouse	WB	Hu, Ms, Rt
pS2	500-6404	\$239	0.2 ml	Mouse	IHC-P	Hu
PSA	600-700	\$195	0.2 ml	Rabbit	WB, ELISA	Hu
PSA	500-2964	\$169	0.2 ml	Rabbit	IHC(P), WB	Hu
PSA	500-6804	\$219	0.2 ml	Mouse	WB, IHC-P	Hu
Raf -A	500-7074	\$245	0.2 ml	Rabbit	WB	Hu, Ms, Rt
Raf1	500-8214	\$45	0.2 ml	Rabbit	WB, IP	Hu, Ms, Rt
Ras	500-4384	\$299	0.2 ml	Rabbit	IHC(P)	Hu, Ms, Rt
Ras18	500-8234	\$249	0.2 ml	Rabbit	WB	Hu
Renal Cell Carcinoma	500-6414	\$299	0.2 ml	Mouse	WB, IHC-P	Hu,Rt
Retinoblastoma	500-4314	\$299	0.2 ml	Rabbit	IHC(P), WB	Hu, Ms, Rt
Retinoblastoma	500-6814	\$289	0.2 ml	Mouse	WB, IP, IHC-P, IF, FC	Hu
Retinoic Acid Receptor beta	500-4374	\$299	0.2 ml	Rabbit	IHC(P)	Hu
Retinol Binding Protein	500-8254	\$299	0.2 ml	Mouse	WB	Hu, Ms, Rt
Rho	500-10054	\$299	0.2 ml	Rabbit	WB	Hu, Ms, Rt
S100	500-2144	\$199	0.2 ml	Rabbit	IHC(P)	Hu
S100	500-6824	\$219	0.2 ml	Mouse	IHC-P	Hu, Ms, Rt
SAPOSIN(PSAP)	600-470	\$220	0.2 ml	Rabbit	WB, ELISA	Hu
Selectin E (IN)	600-850	\$225	0.2 ml	Rabbit	WB, ELISA	Hu, Ms, Rt
Selectin E (N term)	600-840	\$220	0.2 ml	Rabbit	WB, ELISA	Hu, , Rt
Sentrin-2	500-10504	\$249	0.2 ml	Rabbit	WB	Hu
SOCS1	600-520	\$199	0.2 ml	Rabbit	WB, ELISA	Hu, Ms, Rt
SOCS2	600-530	\$199	0.2 ml	Rabbit	WB, ELISA	Hu, Ms, Rt
SOCS3	600-540	\$199	0.2 ml	Rabbit	WB, ELISA	Hu, Ms, Rt
SOCS-4	500-10164	\$215	0.2 ml	Rabbit	WB	Hu

SOCS-5	500-10174	\$219	0.2 ml	Rabbit	WB	Hu, Ms
Somatostatin	500-2164	\$289	0.2 ml	Rabbit	IHC(P)	Hu
Somatostatin Receptor 1	500-4094	\$299	0.2 ml	Rabbit	IHC(P)	Hu, Ms, Rt
SPHK1	600-120	\$199	0.2 ml	Rabbit	WB, ELISA,	Hu
SPHK2	600-130	\$199	0.2 ml	Rabbit	WB, ELISA,	Hu
STAT1	500-9314	\$235	0.2 ml	Rabbit	WB, IP	Hu, Ms, Rt
STAT2	500-12374	\$245	0.2 ml	Rabbit	IHC-P, WB	Hu
STAT3	500-3694	\$220	0.2 ml	Rabbit	IHC(P), WB, IP	Hu, Ms, Rt
STAT4	500-12194	\$225	0.2 ml	Rabbit	IHC, WB, ELISA, IP	Hu, Ms
STAT5	500-8364	\$225	0.2 ml	Rabbit	WB	Hu
STAT5a	500-3594	\$215	0.2 ml	Rabbit	IHC(P), WB, GS	Hu, Ms, Rt
STAT5b	500-8374	\$219	0.2 ml	Rabbit	WB, GSA	Hu, Ms, Rt
STAT6	500-4294	\$215	0.2 ml	Rabbit	IHC(P), WB, IP	Hu, Ms, Rt
Synaptophysin	500-2174	\$199	0.2 ml	Rabbit	IHC(P), WB	Hu
Synuclein	500-8394	\$245	0.2 ml	Mouse	WB	Hu
Synuclein alpha	500-2684	\$299	0.2 ml	Rabbit	IHC(P)	Hu, Rt
Synuclein beta	500-2774	\$299	0.2 ml	Rabbit	IHC(P)	Hu, Rt
TAFA2	600-460	\$220	0.2 ml	Rabbit	IHC, WB, ELISA	Hu, Ms, Rt
Tau	500-8414	\$239	0.2 ml	Mouse	WB, IF	Hu, Ms, Rt
TEF-1	500-10194	\$219	0.2 ml	Rabbit	WB, IHC	Hu, Ms
Telomerase	500-11034	\$255	0.2 ml	Rabbit	IHC-P	Hu
Tenascin	500-6474	\$289	0.2 ml	Mouse	IHC-P	Hu
Tenascin C	600-780	\$240	0.2 ml	Rabbit	WB, ELISA	Ms
TFE-3	500-10474	\$289	0.2 ml	Rabbit	WB	Hu
TGF beta 1	500-11264	\$299	0.2 ml	Rabbit	IHC-P	Hu
TGF beta 3	500-3944	\$299	0.2 ml	Rabbit	IHC(P), WB, IP	Hu, Ms, Rt
TGF beta R1	500-12344	\$299	0.2 ml	Rabbit	IHC-P, WB	Hu, Ms, Rt
TGF beta Receptor II	500-11244	\$289	0.2 ml	Rabbit	IHC-P	Hu
TGF beta Receptor III	500-11234	\$290	0.2 ml	Rabbit	IHC-P	Hu
TGF-alpha	500-3734	\$299	0.2 ml	Rabbit	IHC(P)	Hu
TGF-beta 2	500-3784	\$299	0.2 ml	Rabbit	IHC(P), WB, IP	Hu, Ms, Rt
Thyroglobulin	500-5454	\$199	0.2 ml	Mouse	WB, IHC-P, FC	Hu, Ms, Rt
Thyroid Hormone Receptor beta, Human	500-5464	\$299	0.2 ml	Mouse	IHC-P	Hu,Do
Thyroid Hormone Receptor, Human	500-5474	\$299	0.2 ml	Mouse	IHC-P	Hu, Ms, Rt
TNF alpha	500-8614	\$299	0.2 ml	Rat	ELISA	Hu
TNFA	500-8444	\$299	0.2 ml	Mouse	WB	Hu
Tpd52 (Tumor Protein D52)	600-610	\$230	0.2 ml	Rabbit	WB, ELISA	Ms
Troponin I	600-680	\$220	0.2 ml	Rabbit	WB, ELISA	Hu, Ms, Rt
Troponin I, cardiac isoform	500-3234	\$225	0.2 ml	Mouse	IHC(P), WB, IP, ELISA	Hu
Troponin T, cardiac isoform	500-3244	\$230	0.2 ml	Mouse	IHC(P), WB, IP, ELISA	Hu
TSH	600-570	\$220	0.2 ml	Mouse	IHC, WB, ELISA	Hu
Tubulin alpha	500-4134	\$299	0.2 ml	Rabbit	IHC(P), WB, IP	Hu, Ms, Rt
Tubulin beta	500-3814	\$299	0.2 ml	Rabbit	IHC(P), WB, IP	Hu, Ms, Rt
Tubulin gamma	500-10334	\$279	0.2 ml	Rabbit	IHC-P, WB	Hu, Ms, Rt

Tubulin-a	500-6874	\$270	0.2 ml	Mouse	WB, IP, IHC-P, IF	Hu, Ms, Rt
Tubulin-b	500-6514	\$269	0.2 ml	Mouse	WB, IHC-P, IF	Hu, Ms, R
Ubiquitin	500-3354	\$185	0.2 ml	Rabbit	IHC(P)	Hu
uNOS	500-3934	\$199	0.2 ml	Rabbit	IHC(P), WB	Hu, Ms, Rt
Vascular Endothelial Growth Factor(VEGF)	500-2614	\$199	0.2 ml	Rabbit	IHC(P), WB, IP	Hu
Vascular Endothelial Growth Factor(VEGF)	500-5494	\$255	0.2 ml	Mouse	WB, IHC-P	Hu
Vasopressin V1b Receptor	500-10214	\$299	0.2 ml	Rabbit	WB	Hu
Villin 2/ezrin/p80	600-790	\$245	0.2 ml	Rabbit	WB, ELISA	Hu, Ms, Rt

## Epitope-Tag Antibodies

Description	Cat#	2006Price	Size	Host	Applications
His-Tag	600-500	\$189	0.2 ml	Rabbit	WB, ELISA
HA (Hemagglutinin)	500-7644	\$220	0.2 ml	Rabbit	WB, IP
E-Tag	600-420	\$199	0.2 ml	Rabbit	WB, ELISA, IP
Myc-Tag	610-010	\$195	0.2 ml	Rabbit	WB, ELISA, IP
FLAG-tag	610-020	\$195	0.2 ml	Rabbit	WB, ELISA, IP
GST	500-4434	\$299	0.2 ml	Rabbit	WB
GST	500-7634	\$349	0.2 ml	Mouse	WB, AP
Biotin	500-7124	\$199	0.2 ml	Mouse	WB, FC
FITC	500-7564	\$199	0.2 ml	Mouse	IHC, FC

## Secondary Antibodies

Description	Cat#	2006Price	Size	Applications
Goat anti mouse IgG (H+L) (unconjugated)	511-010	\$59	0.5 mg/vial	ELISA, WB, IHC, IF
Goat anti mouse IgG (H+L) (Biotinylated)	511-011	\$69	0.5 mg/vial	ELISA, WB, IHC, IF
Goat anti mouse IgG (H+L) (HRP-Linked)	511-012	\$69	0.5 mg/vial	ELISA, WB, IHC, IF
Goat anti mouse IgG (H+L) (AP-linked)	511-013	\$79	0.5 mg/vial	ELISA, WB, IHC, IF
Goat anti rabbit IgG (H+L) (unconjugated)	511-020	\$59	0.5 mg/vial	ELISA, WB, IHC, IF
Goat anti rabbit IgG (H+L) (Biotinylated)	511-021	\$69	0.5 mg/vial	ELISA, WB, IHC, IF
Goat anti rabbit IgG (H+L) (HRP-Linked)	511-022	\$69	0.5 mg/vial	ELISA, WB, IHC, IF
Goat anti rabbit IgG (H+L) (AP-linked)	511-023	\$79	0.5 mg/vial	ELISA, WB, IHC, IF
Goat anti chicken IgY (H+L) (unconjugated)	511-030	\$59	0.5 mg/vial	ELISA, WB, IHC, IF
Goat anti chicken IgY (H+L) (Biotinylated)	511-031	\$69	0.5 mg/vial	ELISA, WB, IHC, IF
Goat anti chicken IgY (H+L) (HRP-Linked)	511-032	\$69	0.5 mg/vial	ELISA, WB, IHC, IF
Goat anti chicken IgY (H+L) (AP-linked)	511-033	\$79	0.5 mg/vial	ELISA, WB, IHC, IF
Rabbit anti Mouse IgG (H+L) (Unconjugated)	511-040	\$59	0.5 mg/vial	ELISA, WB, IHC, IF
Rabbit anti mouse IgG (H+L) (Biotinylated)	511-041	\$69	0.5 mg/vial	ELISA, WB, IHC, IF
Rabbit anti mouse IgG (H+L) (HRP-Linked)	511-042	\$69	0.5 mg/vial	ELISA, WB, IHC, IF
Rabbit anti mouse IgG (H+L) (AP-linked)	511-043	\$79	0.5 mg/vial	ELISA, WB, IHC, IF
Rabbit anti chicken IgY (H+L) (unconjugated)	511-060	\$59	0.5 mg/vial	ELISA, WB, IHC, IF
Rabbit anti chicken IgY (H+L) (Biotinylated)	511-061	\$69	0.5 mg/vial	ELISA, WB, IHC, IF
Rabbit anti chicken IgY (H+L) (HRP-Linked)	511-062	\$69	0.5 mg/vial	ELISA, WB, IHC, IF
Rabbit anti chicken IgY (H+L) (AP-linked)	511-063	\$79	0.5 mg/vial	ELISA, WB, IHC, IF

Rabbit anti goat IgG (H+L) (unconjugated)	<b>511-050</b>	\$59	0.5 mg/vial	ELISA, WB, IHC, IF
Rabbit anti goat IgG (H+L) (Biotinylated)	<b>511-051</b>	\$69	0.5 mg/vial	ELISA, WB, IHC, IF
Rabbit anti goat IgG (H+L) (HRP-Linked)	<b>511-052</b>	\$69	0.5 mg/vial	ELISA, WB, IHC, IF
Rabbit anti goat IgG (H+L) (AP-linked)	<b>511-053</b>	\$79	0.5 mg/vial	ELISA, WB, IHC, IF

## Antibody Reagents

Description	Cat#	2006Price	Size
Rec Protein A	<b>800-00</b>	\$125	5 mg
Ab <sup>MAX</sup> His-Trap Pre-packed column	<b>800-10H</b>	\$250	5x 1ml
Ab <sup>MAX</sup> Protein A Pre-packed column	<b>800-20A</b>	\$255	5 x1ml
Ab <sup>MAX</sup> Antibody Purification Kit	<b>800-30AP</b>	\$395	1 kit
Ab <sup>MAX</sup> Column Prep Kit (SH-reactive)	<b>800-40C</b>	\$345	1 kt
Ab <sup>MAX</sup> Column Prep Kit (NH2-reactive)	<b>800-50N</b>	\$345	1 kit
Ab <sup>MAX</sup> Column Prep Kit (COOH-reactive)	<b>800-60CAR</b>	\$345	1 kit
Ab <sup>MAX</sup> Column Prep Kit (MAP Peptide)	<b>800-70MAP</b>	\$345	1 kit
Ab <sup>MAX</sup> Maleimide-activated KLH	<b>800-80KLH</b>	\$185	5 mg
Ab <sup>MAX</sup> Maleimide-activated BSA	<b>800-90BSA</b>	\$145	5 mg
Ab <sup>MAX</sup> Maleimide-activated GGG	<b>800-100GGG</b>	\$155	5 mg
Ab <sup>MAX</sup> Maleimide-activated OVA	<b>800-110OVA</b>	\$165	5 mg

## Assay Kits

Description	Cat#	2006Price	Size
Ab <sup>MAX</sup> Human Midkine ELISA Kit	<b>700-11A</b>	\$399	100 assay
Ab <sup>MAX</sup> Fab Fragment Kit	<b>700-21</b>	\$399	1 kit
Ab <sup>MAX</sup> F(ab)2 Fragment Kit	<b>700-31</b>	\$399	1 kit
Ab <sup>MAX</sup> Biotinylation Kit	<b>700-41</b>	\$295	1 kit
Ab <sup>MAX</sup> Immunoprecipitation Kit	<b>700-51</b>	\$295	1 kit
Ab <sup>MAX</sup> Mouse IgG Capture Immunoassay Kit	<b>700-61</b>	\$295	100 assay
Ab <sup>MAX</sup> Rabbit IgG Capture Immunoassay Kit	<b>700-71</b>	\$295	100 assay
Ab <sup>MAX</sup> Human IgG Capture Immunoassay Kit	<b>700-81</b>	\$295	100 assay
Ab <sup>MAX</sup> Chick IgY Capture Immunoassay Kit	<b>700-91</b>	\$295	100 assay



**1-866-628-9898. [info@abbomax.com](mailto:info@abbomax.com). [www.abbomax.com](http://www.abbomax.com)**

# ABBOMAX INC Custom Peptide/Antibody Order Form

Please fax, email or call AbboMax to place orders

**Amino Acid Chart**

<b>A(Ala)</b>	Alanine	<b>C(Cys)</b>	Cysteine	<b>H(His)</b>	Histidine	<b>M(Met)</b>	Methionine	<b>T(Thr)</b>	Threonine
<b>R(Arg)</b>	Arginine	<b>Q(Gln)</b>	Glutamine	<b>I(Ile)</b>	Isoleucine	<b>F(Phe)</b>	Phenylalanine	<b>W(Trp)</b>	Tryptophan
<b>N(Asn)</b>	Asparagine	<b>E(Glu)</b>	Glutamic Acid	<b>L(Leu)</b>	Leucine	<b>P(Pro)</b>	Proline	<b>Y(Tyr)</b>	Tyrosine
<b>D(Asp)</b>	Aspartic Acid	<b>G(Gly)</b>	Glycine	<b>K(Lys)</b>	Lysine	<b>S(Ser)</b>	Serine	<b>V(Val)</b>	Valine

Date: \_\_\_\_\_

PO#: \_\_\_\_\_

Phone: \_\_\_\_\_

Fax: \_\_\_\_\_

Shipping Address:

Billing Address:

Attn Name: \_\_\_\_\_

Attn Name: \_\_\_\_\_

Institute/Company: \_\_\_\_\_

Institute/Company: \_\_\_\_\_

Address: \_\_\_\_\_

Address: \_\_\_\_\_

\_\_\_\_\_

\_\_\_\_\_

\_\_\_\_\_

\_\_\_\_\_

Peptide Name	Sequences	Length of aa	Purity	Quantity	Modification	Antibody Production	
						Polyclone	Monoclonal

**AbboMax, Inc**  
 1161 Ringwood Ct. Suite: #100  
 San Jose, CA 95131  
 Tel: 408-321-9898  
 1-866-628-9898 (USA)  
 Fax: 408-321-9896  
 info@abbomax.com