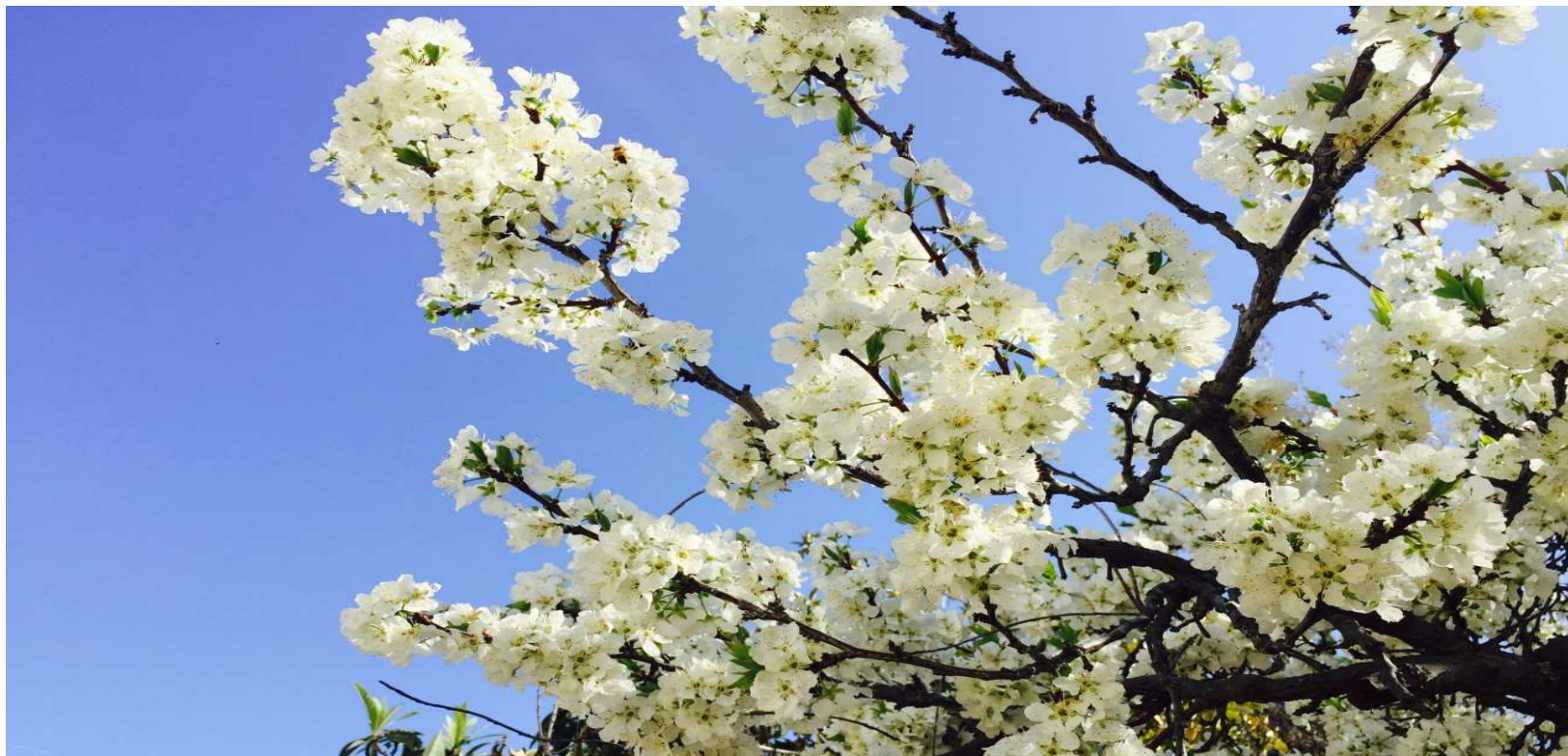


CUSTOMER SERVICES



Clon^{MAX} Customer Antibody Engineering and Molecular Cloning Services

- Monoclonal antibody cloning and sequence
- Variable domains plus signal sequence:
- Full Length antibody sequencing
- Antibody sequence Cloning
- Monoclonal antibody domain swap and scFV-Fc construction
- Antibody humanization
- Stable cell line development

Ab^{Max} Antibody Development and Protein Conjugation Services

- Protein-antibody package
- Peptide-antibody package
- Phosphospecific antibody package
- Monoclonal antibody package
- Carrier protein conjugation
- Antibody affinity purification

Clone^{Max} CUSTOMER ANTIBODY ENGINEERING SERVICES

Monoclonal Antibody Cloning and Sequencing Service



Feature

- Hybridoma cell pellet (2-4 ml cell culture)
- RNA purification (RNA purification mini prep)
- RT-PCR (One-step RT-PCR kits)
- clone to the standard clone vector (pDrive vector) and sequencing
- Sequence analysis and Report

1. Heavy Chain and Light Chain of Variable Region Sequencing (\$650/Clone, 1-2 weeks)

Clones and sequences both heavy chain variable region (VH) and light chain variable region (VL) of monoclonal antibodies from hybridoma

2. Heavy Chain and Light Chain of Variable Region Plus Signal Peptide Sequence: (\$1300/Clone, 2-3 weeks)

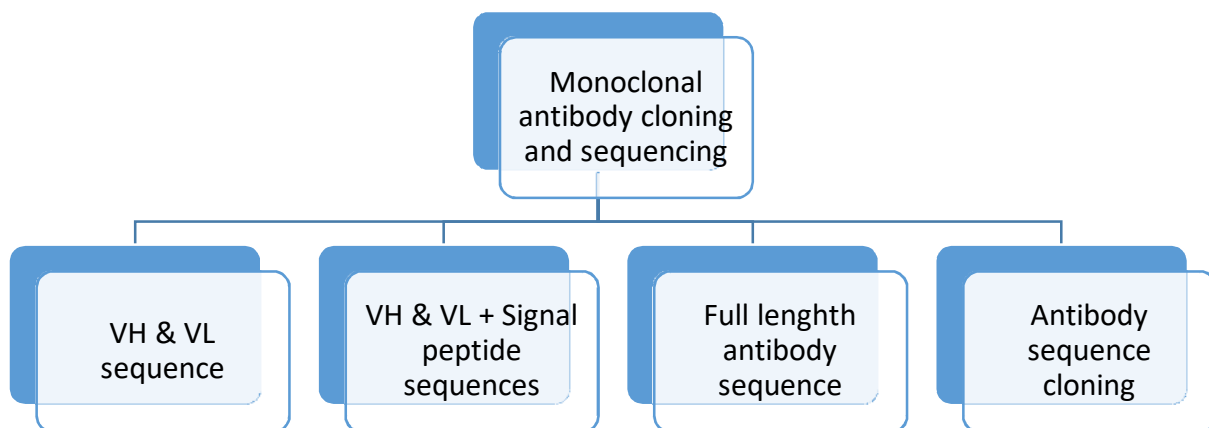
Clones and sequences both heavy chain variable region (VH) and light chain variable region (VL) Plus signal peptide sequences (5' RACE PCR)

3. Full Length Antibody Sequencing: (\$3000/Clone, 2-3 weeks)

Clones and sequences variable regions, constant domains and signal sequences for both heavy chain and light chain from hybridoma

4. Antibody Sequence Cloning: (\$300/Clone, 4-5 days)

Order any of the known sequenced antibody cDNA into designated expression vectors



Antibody Domain Swapping Construction

- Isotype Switching Construction (\$750/Clone, 1-2weeks)
- Chimeric Antibody Construction (\$750/Clone, 1-2weeks)

scFv-Fc Construction

- scFv fusion with Fc Construction (\$650/Clone, 1-2weeks)

Antibody Humanization (Inquiry)

- Obtain mouse antibody sequence from customers
- Annotation and align mouse H/L chain with human germlines using in-house analysis tools
- Select highest homology human germline sequences from best matching VH family and VL family
- Gene synthesis and clone to antibody expression vectors
- Sequence verification and send the antibody humanization clones to customers
- Back mutation by customers requested (Optional)

Stable Cell Line Development (Inquiry)

- Obtain expression vector from customers or subcloning to in-house expression vectors
- Stable transfection and clones selection
- Monitor the cell growth and optimize the antibody production

We also provide services for standard gene cloning and subcloning to the expression vectors, Please contact us for customer services.



AbboMax scientific professionals have been involved in researching, developing and manufacturing high performance antibody engineering for many years. We are delivering high quality products to the scientists in life science field. We are the trusted and dependable supplier to many of the international leading research institutes and clinical diagnostic companies. With original manufacturing more than 90% of our products in our own Silicon Valley Core Facility, we are able to provide bulk quantities of most of our products and services at an economical price. Please contact us for bulk price quote.

Contact Information:

AbboMax, Inc

2528 Qume Drive, Suite 8
San Jose, California, 95131. USA
Tel: 408-573-1898
Toll Free: 1-866-628-9898 (USA)
Fax: 408-573-1858
Email: info@abbomax.com
Website: www.abbomax.com

Shipping:

All shipping and handling charges are prepaid by AbboMax and added to the invoice along with the shipment. If you would like to use your own carrier, please supply the account number when the order is placed. Orders are taken before 12:00PM (Pacific Time) can be shipped same day for the next day delivery domestically. All international orders will be shipped international priority using FedEx.

Ab^{Max} POLYCLONAL PEPTIDE-ANTIBODY PACKAGE

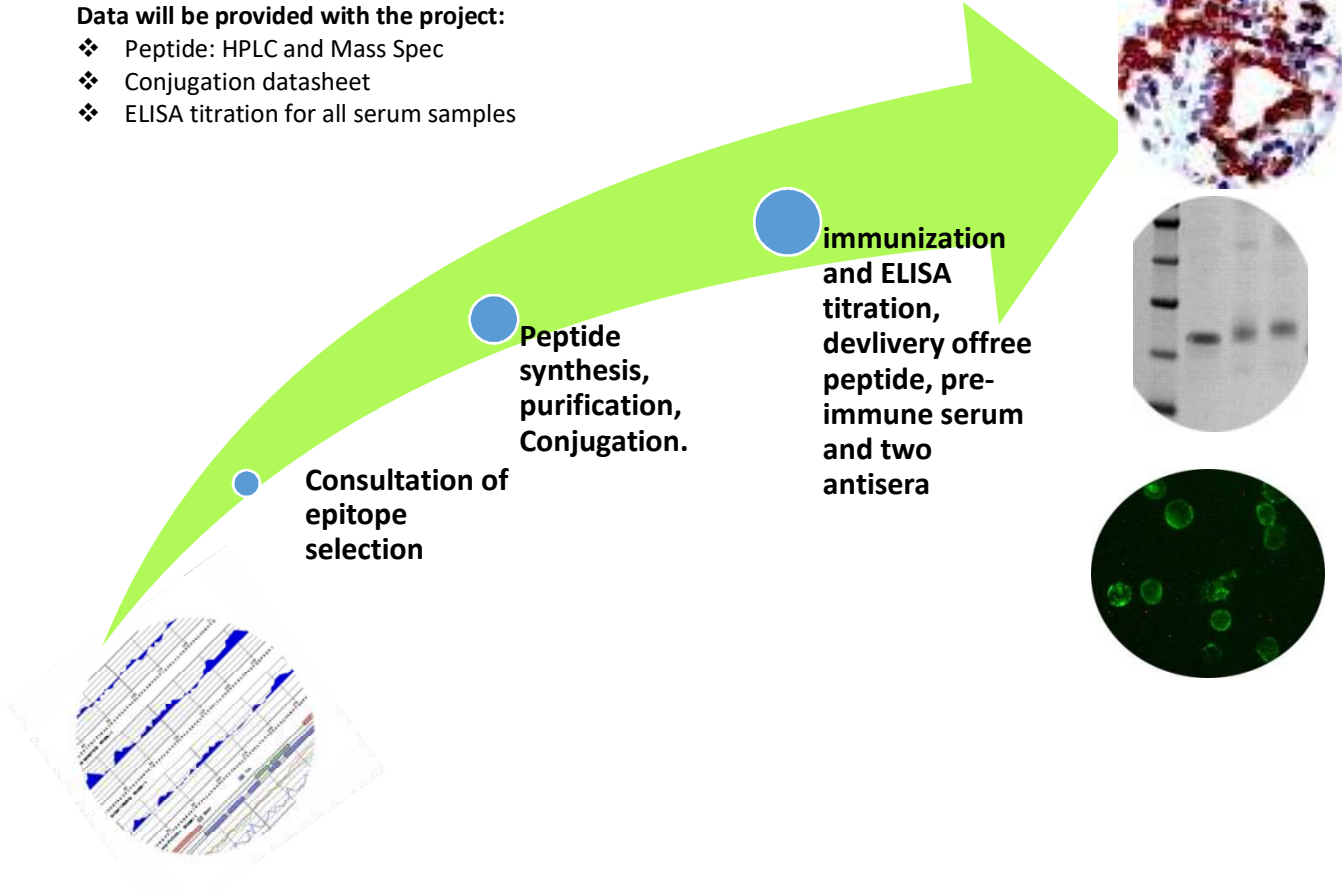
(Cat# 60001, \$1095/Package, delivery in 2.5 months)

AbboMax provides regular polyclonal antibody package. The host can be any of the following animals at your choice – rabbits, chicken, mice and other animals. This package includes the following items

- ❖ Consultation of epitope selection in terms of antigenicity index, hydrophilicity and secondary structure
- ❖ 10-19 mg of peptide (>80%, checked by HPLC, up to 15 mer); BSA/KLH conjugation
- ❖ 2 rabbits (or other animals) with AbboMax immunization protocol
- ❖ Pre-immune serum (2-5 ml/rabbit); 4 s.c. immunizations; 2 bleeds with total 100 ml of serum
- ❖ ELISA titration for all bleeds, Western Blot (Optional): Dot Blot (Optional)

Data will be provided with the project:

- ❖ Peptide: HPLC and Mass Spec
- ❖ Conjugation datasheet
- ❖ ELISA titration for all serum samples



Description	Catalogue #	Price (\$)	COA
Ab ^{Max} Polyclonal peptide-antibody package	60001	\$1095/Package	HPLC, Mass Spec, 5 mg free peptide KLH and BSA conjugation ELISA titration
Ab ^{Max} Polyclonal protein-antibody package	60002	\$600/Package	ELISA titration

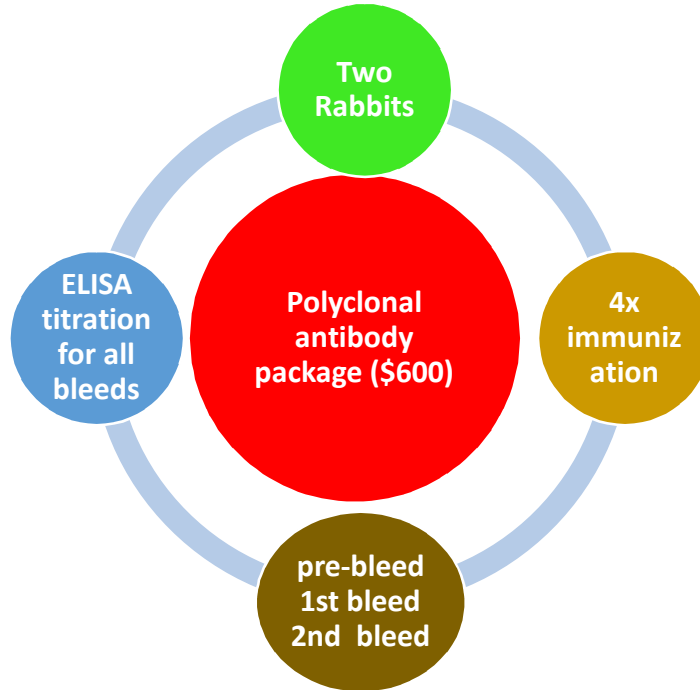
Ab^{Max} POLYCLONAL PROTEIN-ANTIBODY PACKAGE

(Cat# 60002, \$600/package, delivery in 2 months)

*Customers will provide immunogen(s) for immunization

The package includes the following items:

- ❖ 2 rabbits with 80 days' standard immunization protocol
- ❖ Pre-immune serum (2-5 ml/rabbit);
- ❖ Two bleeds (Total: 100 ml)
- ❖ ELISA titration for all bleeds



AbboMax scientific professionals have been involved in researching, developing and manufacturing high performance immunoassays reagents for many years. We are delivering high quality products to the scientists in life science field. We are the trusted and dependable supplier to many of the international leading research institutes and clinical diagnostic companies. With original manufacturing more than 90% of our products in our own Silicon Valley Core Facility, we are able to provide bulk quantities of most of our products at an economical price. Please contact us for bulk price quote.

Contact Information:

AbboMax, Inc
2528 Qume Drive, Suite 8
San Jose, California, 95131. USA
Tel: 408-573-1898
Toll Free: 1-866-628-9898 (USA)
Fax: 408-573-1858
Email: info@abbomax.com
Website: www.abbomax.com

Shipping:

All shipping and handling charges are prepaid by AbboMax and added to the invoice along with the shipment. If you would like to use your own carrier, please supply the account number when the order is placed. Orders are taken before 12:00PM (Pacific Time) can be shipped same day for the next day delivery domestically. All international orders will be shipped international priority using FedEx.

POLYCLONAL PHOSPHOSPECIFIC/PAIRED ANTIBODY PACKAGE

(Cat# 60008, \$2095/Package, Delivery in 2.5 months)

Feature

- ❖ Consultation and prediction of the phosphorylated in terms of antigenicity index, hydrophilicity
- ❖ 10-19 mg of phosphospecific peptide (>90%, checked by HPLC, up to 15 mer);
- ❖ 10-19 mg of NON-phosphospecific peptide (>80%, checked by HPLC, up to 15 mer);
- ❖ BSA/KLH conjugation on both phosphospecific and non-phospho peptides
- ❖ 2 rabbits (or other animals) with AbboMax immunization protocol
- ❖ Pre-immune serum (2-5 ml/rabbit); 4 s.c. immunizations; 2 bleeds with total 100 ml of serum
- ❖ Affinity purification and depletion
- ❖ SDS-PAGE, ELISA and dot blot verification

Data will be provided with the project:

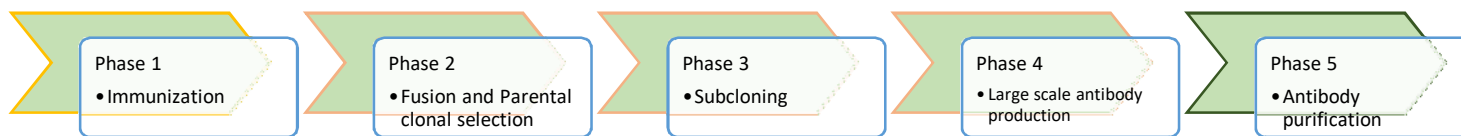
- ❖ Purity and specificity of the phospho and Non phospho antibodies
- ❖ COA of peptides, conjugates, and purified antibodies

Ab^{Max} MONOCLONAL ANTIBODY PACKAGE

(Cat# 60003, \$4500/Package, Delivery in 3 months)

Feature

- ❖ Phase 1: (Cat#60003M1)—5 weeks. 5x mice will be prepared for immunization, 1st shipment of antiserum (1 ml @ 1:100 dilution) with ELISA titration at 7th week up on receiving the order.
- ❖ Phase 2 (Cat# 60003M2)—3 weeks. Shipment of T.C super (~2 ml/each) from 10 ELISA positive parental clones.
- ❖ Phase 3 (Cat# 60003M3)—2 weeks. Shipment of T.C. super from 4-5 subclones, including ELISA and Isotyping data. Cell lines will be cryogenic vialing into 4 vials, and shipped with phase 4.
- ❖ Phase 4 (Cat# 60003M4)—2 weeks. Shipment of 50 ml antibody containing mouse Ascites (from 10 mice) to the customer by inoculating the specific clone selected by the customer.
- ❖ Phase 5 (Optional)— additional one week. Protein A purification according to the monoclonal isotyping



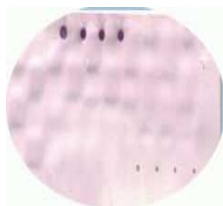
Customer Services



EpiMax™ EPI TOPE MAPPING-The fast way to map epitope

(Cat# 60020, Price Inquiry, Delivery in 3 weeks)

Epitope mapping is an important tool to identify and characterize the antibody binding site, especially vast majority of the therapeutic antibodies are . AbboMax offers a propriety technology to identify exact epitope to where the antibody interacts with protein/antigen by using peptides library construction and immunoassay methods.



- Epitope Mapping by constructed peptide library
- Immunoassay for all epitopes
- Data Report

Description

Catalogue

Ab^{Max} PHOSPHOSPECIFIC ANTIBODY PACKAGE	# 60008
Ab^{Max} MONOCLONAL ANTIBODY PACKAGE	# 60003
EpiMax™ EPI TOPE MAPPING	# 60020
AsyMax™ IMMUNOASSAY DEVELOPMENT	# 60021
AsyMax™ BIOASSAY DEVELOPMENT	# 60022
AsyMax™ KINASE ACTIVITY ASSAY DEVELOPMENT	# 60023

The scientists with abboMax have been involving in immunology and cell biology research/product development for decades. With the state-of-art technology, we can assist you to co-develop immunoassays, bioassays related to immunology, kinase activity along with phosphorylated protein measurement for your specific needs.

- The package includes the following items:
- Free consultation of assay format selection
- Co-development of assays and finalization of each parameters
- Protocol writing, material and assay transferring



AbboMax scientific professionals have been involved in researching, developing and manufacturing high performance immunoassays reagents for many years. We are delivering high quality products to the scientists in life science field. We are the trusted and dependable supplier to many of the international leading research institutes and clinical diagnostic companies. With original manufacturing more than 90% of our products in our own Silicon Valley Core Facility, we are able to provide bulk quantities of most of our products at an economical price. Please contact us for bulk price quote.

Contact Information:

AbboMax, Inc
2528 Qume Drive, Suite 8
San Jose, California, 95131. USA
Tel: 408-573-1898
Toll Free: 1-866-628-9898 (USA)
Fax: 408-573-1858
Email: info@abbomax.com
Website: www.abbomax.com

Shipping:

All shipping and handling charges are prepaid by AbboMax and added to the invoice along with the shipment. If you would like to use your own carrier, please supply the account number when the order is placed. Orders are taken before 12:00PM (Pacific Time) can be shipped same day for the next day delivery domestically. All international orders will be shipped international priority using FedEx.