



Rabbit anti Rho(pS188) Polyclonal Antibody

Alternative Name(s): Ras homolog gene family, member A variant (RhoA), ARHA, RhoH12

Order Information

- **Description:** Rho(pS188)
- **Catalogue:** 602-580
- **Lot:** See label
- **Size:** 100ug/200ul
- **Host:** Rabbit
- **Clone:** nan
- **Application:** IHC(P), WB
- **Reactivity:** Hu, Rt, Ms, Ck, canis,

ANTIGEN PREPARATION

A synthetic peptide corresponding to the C-term of epitope KKKSG at a phosphorylation Ser188 of human Rho protein

BACKGROUND

Ras homolog gene family consists of RhoA, RhoB, RhoC proteins. These proteins interact directly with protein kinase (Rho kinase) to serve as downstream effectors of the activated GTPase. The Rho proteins are involved in the regulation of the actin cytoskeleton. Activation of Rho to the GTP bound state promotes formation of stress fibers and is required for the formation and maintenance of focal adhesions. Pathways stimulated by cytokines, hormones and various forms of stress utilize p21 proteins of the Rho family². Possible mediators for these responses include protein kinase such as p120PKN, and p150, ROK α /Rho-A kinase, myosin light chain (MLC), phosphatase and PIP 5-kinase.³

PURIFICATION

The Rabbit IgG is purified by site-modified Epitope Affinity Purification.

FORMULATION

This affinity purified antibody is supplied in sterile Tris-buffered saline (pH7.2) containing antibody stabilizer

SPECIFICITY

This antibody recognizes ~24 kDa of human RhoA protein. It also reacts with mouse and rat. The other species are not tested

STORAGE

The antibodies are stable for 24 months from date of receipt when stored at -20oC to -70oC. The antibodies can be stored at 2oC-8oC for three month without detectable loss of activity. Avoid repeated freezing-thawing cycles.

APPLICATIONS/SUGGESTED WORKING DILUTIONS*

- Western Blot: 0.1-1 μ g/ml
- ELISA: 0.01-0.1 μ g/ml
- Immunoprecipitation: 2-5 μ g/ml
- IHC: 2-10 μ g/ml
- Flow cytometry: Not tested
- Molecular Weight: 24.0
- Positive Control: Kidney Tissue
- Cellular Location: Cell Membrane

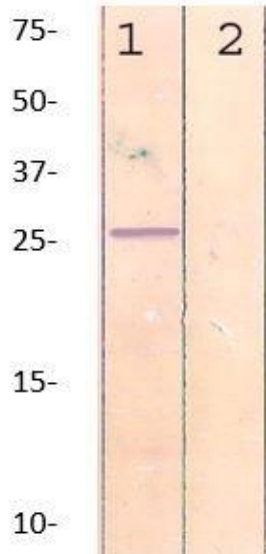
*Optimal dilutions should be determined by researchers for the specific applications.

FOR RESEARCH USE ONLY.

AbboMax, Inc 2528 Qume Drive, Suite 8, San Jose, California 95131, USA
1 408-573-1898 (Tel). 1 408-573-1858 (Fax). www.abbomax.com info@abbomax.com

DATA ATTACHMENTS

MW (kDa)



Western Blot: The cell lysate derived from conditioned MCF-7 was immunoprobed by Rabbit anti-Rho (pS188) (Cat#602-580) at 1:500. An immunoreactive band is observed around ~24 kDa (1). This band is abolished by pre-incubation with immunizing peptide (2).

REFERENCES

FOR RESEARCH USE ONLY.

AbboMax, Inc 2528 Qume Drive, Suite 8, San Jose, California 95131, USA
1 408-573-1898 (Tel). 1 408-573-1858 (Fax). www.abbomax.com info@abbomax.com