



Rabbit anti BCL-6 Polyclonal Antibody

Alternative Name(s): B-cell CLL/lymphoma 6, BCL5; LAZ3; BCL6A; ZNF51; ZBTB27

Order Information

- **Description:** BCL-6
- **Catalogue:** 601-840
- **Lot:** See label
- **Size:** 100ug/200ul
- **Host:** Rabbit
- **Clone:** nan
- **Application:** IHC(P), WB
- **Reactivity:** Hu

ANTIGEN PREPARATION

A synthetic peptide corresponding to inter-segment of human BCL-6 protein.

BACKGROUND

Bcl-6 is zinc finger transcription factor and contains an N-terminal POZ domain. This transcriptional repressor, binds Stat recognition-like DNA elements and influences germinal center development and Th1/Th2 differentiation. BCL-6 is found to be frequently translocated and hypermutated in diffuse large-cell lymphoma (DLCL), and may be involved in the pathogenesis of DLCL.

PURIFICATION

The Rabbit IgG is purified by Epitope Affinity Purification

FORMULATION

This affinity purified antibody is supplied in sterile Phosphatebuffered saline (pH7.2) containing antibody stabilizer

SPECIFICITY

This antibody recognizes human BCL-6 protein. The other species are not tested.

STORAGE

The antibodies are stable for 24 months from date of receipt when stored at -20°C to -70°C . The antibodies can be stored at 2°C - 8°C for three month without detectable loss of activity. Avoid repeated freezing-thawing cycles.

APPLICATIONS/SUGGESTED WORKING DILUTIONS*

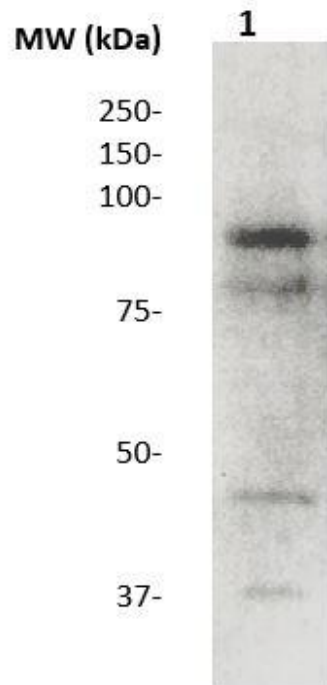
- Western Blot: 0.1-1 $\mu\text{g/ml}$
- ELISA: 0.01-0.1 $\mu\text{g/ml}$
- Immunoprecipitation: 2-5 $\mu\text{g/ml}$
- IHC: 2-10 $\mu\text{g/ml}$
- Flow cytometry: Not tested
- Molecular Weight: 90.0
- Positive Control: Kidney Tissue
- Cellular Location: Cell Membrane

*Optimal dilutions should be determined by researchers for the specific applications.

FOR RESEARCH USE ONLY.

AbboMax, Inc 2528 Qume Drive, Suite 8, San Jose, California 95131, USA
1 408-573-1898 (Tel). 1 408-573-1858 (Fax). www.abbomax.com info@abbomax.com

DATA ATTACHMENTS



Western Blot: The whole lysate derived from HeLa (20 ug/lane) immunoblotted by Rabbit anti -BCL-6 antibody (Cat# 601-840) at 1:500. Observed a major immunoreactive band at molecular weight ~90 kDa.

REFERENCES

FOR RESEARCH USE ONLY.