



Rabbit anti ER(pS118) Polyclonal Antibody

Alternative Name(s): Estrogen receptor 1; ESR1;

Order Information

- **Description:** ER(pS118)
- **Catalogue:** 600-300
- **Lot:** See label
- **Size:** 100ug/200ul
- **Host:** Rabbit
- **Clone:** nan
- **Application:** IHC(P), WB
- **Reactivity:** Hu

ANTIGEN PREPARATION

A synthetic peptide surrounding the epitope –QL-S-PF- with a phosphorylation site of Ser118 of human estrogen receptor.

BACKGROUND

ER (estrogen receptor) belongs to a member of the steroid receptor superfamily. It contains highly conserved DNA binding (DBD) and ligand binding domains (LBD). Through its estrogen-independent and estrogen-dependent activation domains (AF-1 and AF-2, respectively), ER regulates transcription by its phosphorylation at multiple sites, such as serine 104, 106, 118, 167 and 305. Phosphorylation of certain serine at ER may relate to breast cancer process and on-going treatment

PURIFICATION

The Rabbit IgG is purified by site-modified Epitope Affinity Purification.

FORMULATION

This affinity purified antibody is supplied in sterile Tris-buffered saline (pH7.2) containing antibody stabilizer

SPECIFICITY

This antibody recognizes ~67 kDa of human estrogen receptor at the phosphorylation site of Ser 118. It does not cross react to non-phosphorylated peptide. This antibody reacts with human. The other species are not tested.

STORAGE

The antibodies are stable for 24 months from date of receipt when stored at –20oC to –70oC. The antibodies can be stored at 2oC-8oC for three month without detectable loss of activity. Avoid repeated freezing-thawing cycles.

APPLICATIONS/SUGGESTED WORKING DILUTIONS*

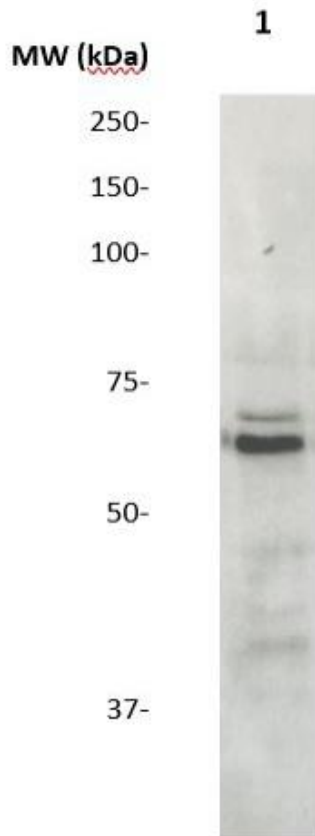
- Western Blot: 0.1-1 µg/ml
- ELISA: 0.01-0.1 µg/ml
- Immunoprecipitation: 2-5 µg/ml
- IHC: 2-10 µg/ml
- Flow cytometry: Not tested
- Molecular Weight: 67.0
- Positive Control: Kidney Tissue
- Cellular Location: Cell Membrane

*Optimal dilutions should be determined by researchers for the specific applications.

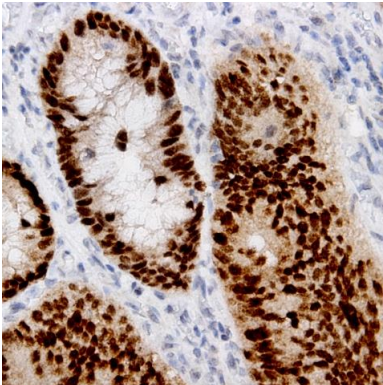
FOR RESEARCH USE ONLY.

AbboMax, Inc 2528 Qume Drive, Suite 8, San Jose, California 95131, USA
1 408-573-1898 (Tel). 1 408-573-1858 (Fax). www.abbomax.com info@abbomax.com

DATA ATTACHMENTS



Western Blot: The whole cell lysates derived from MCF-7 were immunoblotted by Rabbit anti-ER (pSer118) (Cat#600-300) at 1:500. Observed a major immunoreactive band at molecular weight ~67kDa.



Immunohistochemistry: Human Breast carcinoma (FFPE) stained with Rabbit anti-ER(pS118) (Cat# 600-300) at 1:200 for 10 min @ RT. Staining of formalin-fixed tissue requires boiling tissue sections in 10 mM Citrate Buffer, pH 6.0 for 10 min followed by cooling at RT for 20 min.

REFERENCES

FOR RESEARCH USE ONLY.