



Rabbit anti EGFR(pY1173) Polyclonal Antibody

Alternative Name(s): epidermal growth factor receptor; HER1; Proto-oncogene c-ErbB-1

Order Information

- **Description:** EGFR(pY1173)
- **Catalogue:** 600-290
- **Lot:** See label
- **Size:** 100ug/200ul
- **Host:** Rabbit
- **Clone:** nan
- **Application:** IHC(P), WB
- **Reactivity:** Hu

ANTIGEN PREPARATION

A synthetic phosphor-peptide –DNPD-*Y-QQDFF corresponding to residues surrounding Tyr1173 of human EGF receptor

BACKGROUND

EGFR is a transmembrane glycoprotein that is a member of the protein kinase superfamily. This protein is a receptor for members of the epidermal growth factor family. EGFR is a cell surface protein that binds to epidermal growth factor. Binding of the protein to a ligand induces receptor dimerization and tyrosine autophosphorylation and leads to cell proliferation. Mutations in this gene are associated with lung cancer.

PURIFICATION

The Rabbit IgG is purified by site-modified Epitope Affinity Purification.

FORMULATION

This affinity purified antibody is supplied in sterile Tris-buffered saline (pH7.2) containing antibody stabilizer

SPECIFICITY

This antibody recognizes EGFR(pY1173) at the phosphorylation site of Tyr 1173. It does not cross react to non-phosphorylated peptide. This antibody reacts with human. The other species are not tested.

STORAGE

The antibodies are stable for 24 months from date of receipt when stored at –20oC to –70oC. The antibodies can be stored at 2oC-8oC for three month without detectable loss of activity. Avoid repeated freezing-thawing cycles.

APPLICATIONS/SUGGESTED WORKING DILUTIONS*

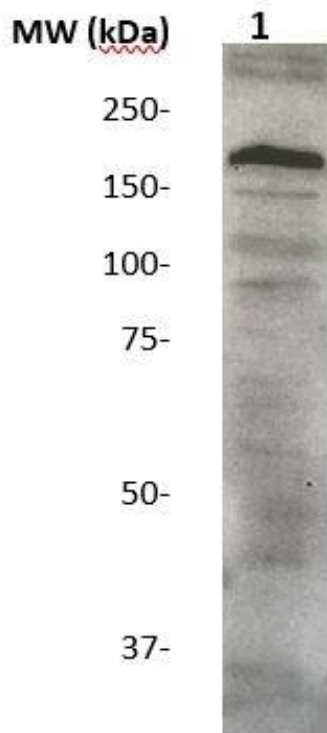
- Western Blot: 0.1-1 µg/ml
- ELISA: 0.01-0.1 µg/ml
- Immunoprecipitation: 2-5 µg/ml
- IHC: 2-10 µg/ml
- Flow cytometry: Not tested
- Molecular Weight: 170.0
- Positive Control: Kidney Tissue
- Cellular Location: Cell Membrane

*Optimal dilutions should be determined by researchers for the specific applications.

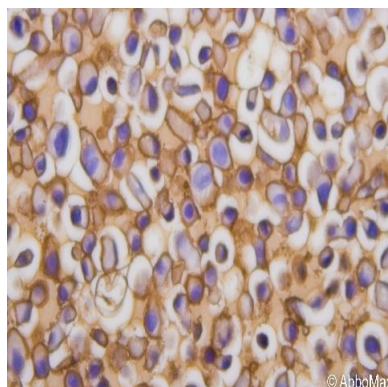
FOR RESEARCH USE ONLY.

AbboMax, Inc 2528 Qume Drive, Suite 8, San Jose, California 95131, USA
1 408-573-1898 (Tel). 1 408-573-1858 (Fax). www.abbomax.com info@abbomax.com

DATA ATTACHMENTS



Western Blot: The whole lysate derived from EGF-stimulated A431 (20 ug/lane) immunoblotted by Rabbit anti-EGFR(pY1173) (Cat# 600-290) at 1:500. Observed a major immunoreactive band at molecular weight ~170 kDa.



Immunohistochemistry: The whole cell pellet SKBR3 (FFPE) was stained with Rabbit anti EGFR (pY1173) (Cat. 600-290) at 1:100 for 30 min @ RT, visualized by using peroxidase-conjugate and DAB chromogen. Staining of formalin-fixed paraffin embedded tissue (FFPE) requires boiling tissue sections in 10 mM Citrate Buffer, pH 6.0 for 10 min followed by cooling at RT for 20 min.

REFERENCES

FOR RESEARCH USE ONLY.

AbboMax, Inc 2528 Qume Drive, Suite 8, San Jose, California 95131, USA
1 408-573-1898 (Tel). 1 408-573-1858 (Fax). www.abbomax.com info@abbomax.com