



## Rabbit anti BTC Polyclonal Antibody

Alternative Name(s): betacellulin

### Order Information

- **Description:** BTC
- **Catalogue:** 600-140
- **Lot:** See label
- **Size:** 100ug/200ul
- **Host:** Rabbit
- **Clone:** nan
- **Application:** IHC(P), WB
- **Reactivity:** Hu

### **ANTIGEN PREPARATION**

The full-length recombinant protein of BTC Betacellulin

### **BACKGROUND**

BTC is a member of the epidermal growth factor (EGF) family of proteins. It is synthesized as a large transmembrane precursor molecule that can be cleaved proteolytically to release the soluble form of BTC or function as membrane-anchored growth factors in juxtacrine signaling. BTC, in addition to stimulating homodimers of ErbB-1 and ErbB-4, is capable of binding and activating all possible combinations of heterodimeric ErbB receptors including the oncogenic ErbB-2/ErbB-3 complex. BTC promotes pancreatic cell proliferation and insulin secretion, as well as retinal vascular permeability. Mutations in this gene may be associated with type 2 diabetes in human patients. It is also expressed in some human malignancies and may have an important role in tumor growth progression.

### **PURIFICATION**

The Rabbit IgG is purified by Epitope Affinity Purification

### **FORMULATION**

This affinity purified antibody is supplied in sterile Phosphatebuffered saline (pH7.2) containing antibody stabilizer

### **SPECIFICITY**

This antibody reacts with human BTC. The other species are not tested.

### **STORAGE**

The antibodies are stable for 24 months from date of receipt when stored at  $-20^{\circ}\text{C}$  to  $-70^{\circ}\text{C}$ . The antibodies can be stored at  $2^{\circ}\text{C}$ - $8^{\circ}\text{C}$  for three month without detectable loss of activity. Avoid repeated freezing-thawing cycles.

### **APPLICATIONS/SUGGESTED WORKING DILUTIONS\***

- Western Blot: 0.1-1  $\mu\text{g/ml}$
- ELISA: 0.01-0.1  $\mu\text{g/ml}$
- Immunoprecipitation: 2-5  $\mu\text{g/ml}$
- IHC: 2-10  $\mu\text{g/ml}$
- Flow cytometry: Not tested
- Molecular Weight: 24.0
- Positive Control: Kidney Tissue
- Cellular Location: Cell Membrane

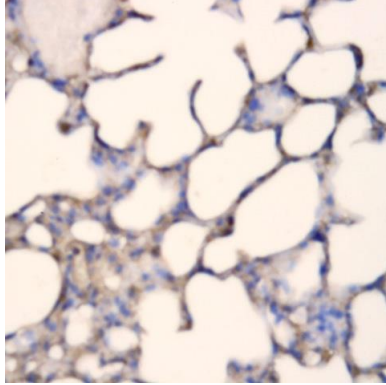
\*Optimal dilutions should be determined by researchers for the specific applications.

### **FOR RESEARCH USE ONLY.**

AbboMax, Inc 2528 Qume Drive, Suite 8, San Jose, California 95131, USA  
1 408-573-1898 (Tel). 1 408-573-1858 (Fax). [www.abbomax.com](http://www.abbomax.com) [info@abbomax.com](mailto:info@abbomax.com)



## DATA ATTACHMENTS



Immunohistochemistry: Lung tissue (FFPE) stained with Rabbit anti-BTC (Cat# 600-140) at 1:200 for 10 min @ RT. Staining of formalin-fixed tissue requires boiling tissue sections in 10 mM Citrate Buffer, pH 6.0 for 10 min followed by cooling at RT for 20 min.

## REFERENCES

### FOR RESEARCH USE ONLY.

AbboMax, Inc 2528 Qume Drive, Suite 8, San Jose, California 95131, USA  
1 408-573-1898 (Tel). 1 408-573-1858 (Fax). [www.abbomax.com](http://www.abbomax.com) [info@abbomax.com](mailto:info@abbomax.com)