



Mouse anti Biotin Monoclonal Antibody

Alternative Name(s): Biotin

Order Information

- **Description:** Biotin
- **Catalogue:** 500-7124
- **Lot:** See label
- **Size:** 100ug/200ul
- **Host:** Mouse
- **Clone:** 3D6
- **Application:** IHC(P), WB, FC
- **Reactivity:** all species

ANTIGEN PREPARATION

Biotin-conjugates as an immunogen.

BACKGROUND

This antibody has Ab-1 has a very high affinity for biotin and is excellent for use in various amplification techniques. It recognizes both the free and protein conjugated (either soluble or cell bound) form of biotin. In some applications, localization of biotinylated probes with avidin produces unacceptably high background staining. Anti-biotin antibody may be substituted to decrease this noise.

PURIFICATION

The mouse IgG is purified by Protein A-Affinity Chromatography according to Isotyping

FORMULATION

This affinity purified antibody is supplied in sterile Phosphatebuffered saline (pH7.2) containing antibody stabilizer

SPECIFICITY

This antibody recognizes free Biotin or bound-form biotin, including protein-Biotin, DNA/RNA-Biotin.

STORAGE

The antibodies are stable for 24 months from date of receipt when stored at -20oC to -70oC. The antibodies can be stored at 2oC-8oC for three month without detectable loss of activity. Avoid repeated freezing-thawing cycles.

APPLICATIONS/SUGGESTED WORKING DILUTIONS*

- Western Blot: 0.1-1 µg/ml
- ELISA: 0.01-0.1 µg/ml
- Immunoprecipitation: 2-5 µg/ml
- IHC: 2-10 µg/ml
- Flow cytometry: 0.5-5 µg/10⁶ cells
- Molecular Weight: 244.0
- Positive Control: Kidney Tissue
- Cellular Location: Cell Membrane

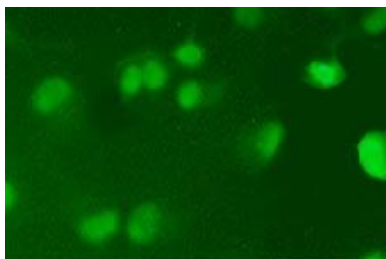
*Optimal dilutions should be determined by researchers for the specific applications.

FOR RESEARCH USE ONLY.

AbboMax, Inc 2528 Qume Drive, Suite 8, San Jose, California 95131, USA
1 408-573-1898 (Tel). 1 408-573-1858 (Fax). www.abbomax.com info@abbomax.com



DATA ATTACHMENTS



Immunohistochemistry: Biotinylated antibody STAT5 was detected by Mouse anti Biotin (1:100), and visualized by FITC-Goat anti Mouse IgG. The STAT5 is nuclear located.

IHC: Biotinylated STAT5 antibody was detected by MsxBiotin at 1:100, and visualized by FITC-Goat anti Ms IgG. The STAT5 is nuclear located.

REFERENCES

FOR RESEARCH USE ONLY.

AbboMax, Inc 2528 Qume Drive, Suite 8, San Jose, California 95131, USA
1 408-573-1898 (Tel). 1 408-573-1858 (Fax). www.abbomax.com info@abbomax.com