



Mouse anti c-Abl Monoclonal Antibody

Alternative Name(s): c-abl oncogene 1, non-receptor tyrosine kinase

Order Information

- **Description:** c-Abl
- **Catalogue:** 500-6564
- **Lot:** See label
- **Size:** 100ug/200ul
- **Host:** Mouse
- **Clone:** ABM328
- **Application:** IHC(P), WB, IF
- **Reactivity:** Hu,Ms

ANTIGEN PREPARATION

The synthetic peptide corresponding to SH2 domain of c-Abl protein.

BACKGROUND

The c-Abl proto-oncogene encodes a protein tyrosine kinase that is located in the cytoplasm and nucleus. It is activated by certain DNA-damaging agents and regulates induction of the stress-activated c-Jun N-terminal protein kinase (SAPK). In chronic myelogenous leukemia and in a subset of acute lymphoblastic leukemias, the c-Abl proto-oncogene undergoes a (9;22) chromosomal translocation producing a novel rearranged chromosome (the Philadelphia chromosome). As the result of the fusion of c-Abl sequences from chromosome 9 to the Bcr gene on chromosome 22. The molecular consequence of this translocation is the generation of a chimeric Bcr/Abl mRNA encoding activated Abl protein tyrosine kinase.

PURIFICATION

The mouse IgG is purified by Protein A-Affinity Chromatography according to Isotyping

FORMULATION

This affinity purified antibody is supplied in sterile Phosphatebuffered saline (pH7.2) containing antibody stabilizer

SPECIFICITY

This antibody recognizes c-Abl protein. It cross react to human and mouse. The other species was not tested.

STORAGE

The antibodies are stable for 24 months from date of receipt when stored at -20oC to -70oC. The antibodies can be stored at 2oC-8oC for three month without detectable loss of activity. Avoid repeated freezing-thawing cycles.

APPLICATIONS/SUGGESTED WORKING DILUTIONS*

- Western Blot: 0.1-1 µg/ml
- ELISA: 0.01-0.1 µg/ml
- Immunoprecipitation: 2-5 µg/ml
- IHC: 2-10 µg/ml
- Flow cytometry: Not tested
- Molecular Weight: 120-140
- Positive Control: Kidney Tissue
- Cellular Location: Cell Membrane

*Optimal dilutions should be determined by researchers for the specific applications.

FOR RESEARCH USE ONLY.

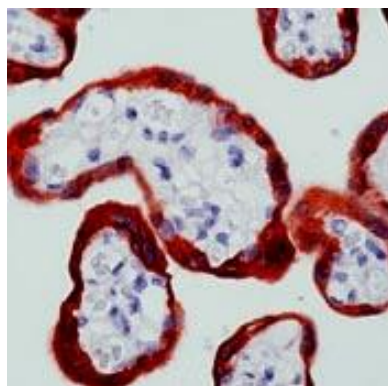
AbboMax, Inc 2528 Qume Drive, Suite 8, San Jose, California 95131, USA
1 408-573-1898 (Tel). 1 408-573-1858 (Fax). www.abbomax.com info@abbomax.com

DATA ATTACHMENTS

kDa



Western Blot: The whole cell lysate derived from HELA was separated in 10% SDS-PAGE, transferred onto NC membrane, and immunoblotted by Mouse anti – C-Abl (Cat#500-6564) antibody at 1:500 . An immunoreactive band around 120 kDa was observed.



Immunohistochemistry: The human Placenta (FFPE) stained with Mouse anti c-Abl monoclonal antibody (Cat#500-6564) at 1:100. (Note: formalin-fixed, paraffin-embedded sections need 15 minutes heat-induced epitope retrieval in 10 mM citrate buffer, pH 6.0, and 30 minutes incubation at room temperature with the primary antibody.

REFERENCES

FOR RESEARCH USE ONLY.

AbboMax, Inc 2528 Qume Drive, Suite 8, San Jose, California 95131, USA
1 408-573-1898 (Tel). 1 408-573-1858 (Fax). www.abbomax.com info@abbomax.com