



## **Rabbit anti EGFR(pS1070) Polyclonal Antibody**

**Alternative Name(s):** epidermal growth factor receptor; HER1; Proto-oncogene c-ErbB-1

### **Order Information**

- **Description:** EGFR(pS1070)
- **Catalogue:** 500-11684
- **Lot:** See label
- **Size:** 100ug/200ul
- **Host:** Rabbit
- **Clone:** nan
- **Application:** IHC(P), WB
- **Reactivity:** Hu, Ms

### **ANTIGEN PREPARATION**

A synthetic phosphor-peptide –FLQRY-S-SDPT corresponding to residues surrounding Ser1070 of human EGF receptor.

### **BACKGROUND**

EGFR is a transmembrane glycoprotein that is a member of the protein kinase superfamily. This protein is a receptor for members of the epidermal growth factor family. EGFR is a cell surface protein that binds to epidermal growth factor. Binding of the protein to a ligand induces receptor dimerization and tyrosine autophosphorylation and leads to cell proliferation. Mutations in this gene are associated with lung cancer.

### **PURIFICATION**

The Rabbit IgG is purified by site-modified Epitope Affinity Purification.

### **FORMULATION**

This affinity purified antibody is supplied in sterile Tris-buffered saline (pH7.2) containing antibody stabilizer

### **SPECIFICITY**

This antibody recognizes EGFR with the phosphorylation site Ser1070. It does not cross-react with non-phosphospecific peptide.

### **STORAGE**

The antibodies are stable for 24 months from date of receipt when stored at –20oC to –70oC. The antibodies can be stored at 2oC-8oC for three month without detectable loss of activity. Avoid repeated freezing-thawing cycles.

### **APPLICATIONS/SUGGESTED WORKING DILUTIONS\***

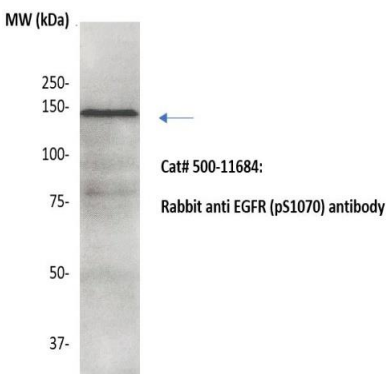
- Western Blot: 0.1-1 µg/ml
- ELISA: 0.01-0.1 µg/ml
- Immunoprecipitation: 2-5 µg/ml
- IHC: 2-10 µg/ml
- Flow cytometry: Not tested
- Molecular Weight: 150.0
- Positive Control: Kidney Tissue
- Cellular Location: Cell Membrane

\*Optimal dilutions should be determined by researchers for the specific applications.

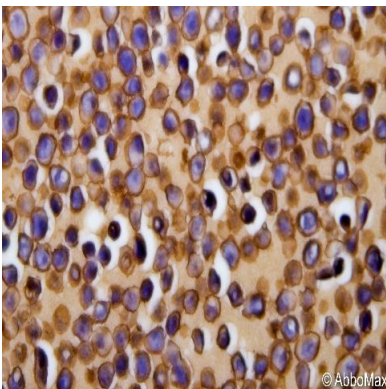
### **FOR RESEARCH USE ONLY.**

AbboMax, Inc 2528 Qume Drive, Suite 8, San Jose, California 95131, USA  
1 408-573-1898 (Tel). 1 408-573-1858 (Fax). [www.abbomax.com](http://www.abbomax.com) [info@abbomax.com](mailto:info@abbomax.com)

## DATA ATTACHMENTS



Western Blot: The whole lysate derived from SKBR3 (20 ug/lane) immunoblotted by Rabbit anti – EGFR(pS1070) (Cat# 500-11684) at 1:500. Observed a major immunoreactive band at molecular weight kDa.



Immunohistochemistry: HT-29 cell pellet (FFPE) was stained with Rabbit anti EGFR (pS1070) (Cat. 500-11684) at 1:100 for 30 min @ RT, visualized by using peroxidase-conjugate and DAB chromogen. Staining of formalin-fixed paraffin embedded tissue (FFPE) requires boiling tissue sections in 10 mM Citrate Buffer, pH 6.0 for 10 min followed by cooling at RT for 20 min.

## REFERENCES

### FOR RESEARCH USE ONLY.

AbboMax, Inc 2528 Qume Drive, Suite 8, San Jose, California 95131, USA  
1 408-573-1898 (Tel). 1 408-573-1858 (Fax). [www.abbomax.com](http://www.abbomax.com) [info@abbomax.com](mailto:info@abbomax.com)