



Rabbit anti CD147/EMMPRIN Polyclonal Antibody

Alternative Name(s): CD147; EMMPRIN;

Order Information

- **Description:** CD147/EMMPRIN
- **Catalogue:** 500-10534
- **Lot:** See label
- **Size:** 100ug/200ul
- **Host:** Rabbit
- **Clone:** nan
- **Application:** WB
- **Reactivity:** Hu

ANTIGEN PREPARATION

Recombinant protein of full length of human CD147.

BACKGROUND

CD147 or EMMPRIN (extracellular matrix metalloproteinase inducer) is a plasma membrane protein that is important in spermatogenesis, embryo implantation, neural network formation, and tumor progression. This protein is also a member of the immunoglobulin super-family, it is a 58kDa protein with two immunoglobulin domains that was originally purified from the plasma membrane of the human LX-1 lung carcinoma cell line. CD147 has been localized on the outer surface of tumor cells, where it interacts with fibroblasts to stimulate the expression of matrix metalloproteinases (MMPs). CD147 inhibition has been proposed as a novel strategy in the prevention of cancer invasion and metastasis.

PURIFICATION

The Rabbit IgG is purified by Epitope Affinity Purification

FORMULATION

This affinity purified antibody is supplied in sterile Phosphatebuffered saline (pH7.2) containing antibody stabilizer

SPECIFICITY

This antibody reacts with human CD147. The other species are not tested.

STORAGE

The antibodies are stable for 24 months from date of receipt when stored at -20°C to -70°C . The antibodies can be stored at 2°C - 8°C for three month without detectable loss of activity. Avoid repeated freezing-thawing cycles.

APPLICATIONS/SUGGESTED WORKING DILUTIONS*

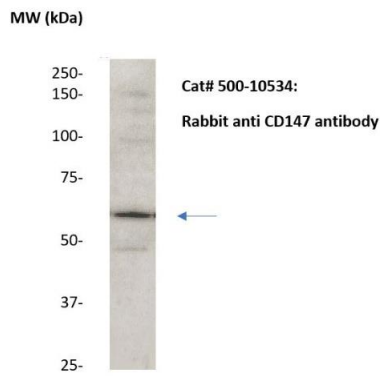
- Western Blot: 0.1-1 $\mu\text{g}/\text{ml}$
- ELISA: nan
- Immunoprecipitation: nan
- IHC: 2-10 $\mu\text{g}/\text{ml}$
- Flow cytometry: Not tested
- Molecular Weight: 55.0
- Positive Control: Kidney Tissue
- Cellular Location: Cell Membrane

*Optimal dilutions should be determined by researchers for the specific applications.

FOR RESEARCH USE ONLY.

AbboMax, Inc 2528 Qume Drive, Suite 8, San Jose, California 95131, USA
1 408-573-1898 (Tel). 1 408-573-1858 (Fax). www.abbomax.com info@abbomax.com

DATA ATTACHMENTS



Western Blot: The whole lysate derived from A549 (20 ug/lane) immunoblotted by Rabbit anti -CD147 (Cat# 500-10534) at 1:500. Observed a major immunoreactive band at molecular weight ~55 kDa.

REFERENCES

FOR RESEARCH USE ONLY.